



**Waterfront Living on  
Beautiful Glimpse Lake**



[www.landquest.com](http://www.landquest.com)

**Valerie Kynoch**  
Personal Real Estate Corporation  
[val@landquest.com](mailto:val@landquest.com)  
(250) 280-0994



Your Land. Your Legacy. Our Expertise.



“The Source” for Oceanfront, Lakefront,  
Islands, Ranches, Resorts & Land  
in British Columbia

[www.landquest.com](http://www.landquest.com)

# Waterfront Living on Beautiful Glimpse Lake

## PROPERTY DETAILS

<b>Listing Number:</b>	26096
<b>Price:</b>	\$899,000
<b>Taxes (2025):</b>	\$1,766.82
<b>Size:</b>	0.73 of an acre
<b>Zoning:</b>	RL-1

## DESCRIPTION

Waterfront on Glimpse Lake! Here is your opportunity to start enjoying lake life and making lasting memories with friends and family at this beautifully maintained 0.73-acre waterfront property, offering a rare combination of privacy, comfort, and true turnkey living. The 1,200 sq. ft. home has undergone extensive renovations and has been lovingly cared for, presenting an immaculate, move-in ready opportunity.

The upper-level features three comfortable bedrooms, all with large windows that capture the surrounding views. The primary bedroom showcases stunning lake vistas and is filled with natural light. A versatile landing nook offers space for a home office, reading area, or additional sleeping, complete with patio doors opening onto a peaceful upper deck overlooking the water.

The main level is warm and inviting, with an open-concept layout connecting the kitchen, dining, and living areas, anchored by a cozy wood stove. Expansive windows frame the lake, while double

patio doors lead to a generous wraparound deck on three sides—perfect for entertaining or enjoying quiet mornings overlooking the landscaped yard and waterfront.

The property itself is a private lakeside retreat, with mature trees, lilacs, perennials, and a lush lawn extending to the water's edge—ideal for outdoor games or evenings around the firepit, with lots of room for a vegetable garden, with raspberries and rhubarb already in place. A fully stocked woodshed, two storage sheds, one at the lakeshore, perfect to store all your fishing gear and water toys and a workshop provide excellent year-round functionality, with potential to convert the workshop into a guest cabin. Easy driveway access with plenty of parking space. This is a true turnkey offering, including all furnishings, kitchenware, and watercraft—fishing boat, canoe, and paddle boat—so you can begin enjoying the lake immediately.

Located just 40 minutes from Merritt, just over an hour to Kamloops, and approximately 2.5 hours from the Fraser Valley, this property strikes the perfect balance between accessibility and escape with a well-maintained road all year round. Glimpse Lake is a quiet, uncrowded setting where natural beauty and recreation define the lifestyle—blending lakefront living with access to the surrounding backcountry. It's an ideal choice for those seeking privacy, outdoor adventure, and a true four-season getaway away from the busier, more developed lakes.

## LOCATION

5008 Lauder Road - Glimpse Lake

## DIRECTIONS

From Merritt take Highway 5A towards Quilchena for 27 km. Turn right onto Douglas Lake Road (7.5 km). Turn left onto Lauder Road (12.9 km) property will be on your right.

## AREA DATA

Set in the scenic southern interior of British Columbia, Glimpse Lake offers a compelling blend of natural beauty, four-season climate, and year-round recreation. Tucked between Merritt and the Douglas Lake Ranch, the area feels peacefully removed while still remaining accessible for everyday needs. Quiet and uncrowded, nature-focused and recreation-driven, Glimpse Lake offers a blend of lakefront living and backcountry access.

It's especially appealing to buyers looking for privacy, outdoor lifestyle, and a true four-season getaway without the business of larger, more developed lakes. There are public boat launches and small recreation sites around the lake.

The region enjoys a classic Interior BC climate, with warm, dry summers and crisp, snowy winters. Summer temperatures typically range from the mid-20s to low-30s °C, perfect for long days on the water, while winters bring regular snowfall and temperatures often dipping below freezing, creating a quiet, alpine atmosphere. Spring and fall are especially dynamic, offering a mix of sun, cloud, and occasional rain, with temperatures ranging from single digits into the teens. Compared to coastal areas, the climate is relatively dry, with plenty of sunshine throughout the year.

Surrounded by rolling hills, open grasslands, and forests of Douglas fir and ponderosa pine, the

landscape defines the lifestyle. The lake itself is a popular spot for fishing—especially rainbow trout—along with kayaking, paddleboarding, and swimming. Beyond the shoreline, an extensive network of trails and backroads invites hiking, ATVing, horseback riding, and wildlife viewing, with deer, moose, and black bears commonly seen.

Balancing privacy with practicality, the Glimpse Lake area offers a true escape into nature without sacrificing access to nearby communities—making it an ideal setting for those seeking a relaxed, outdoor-focused lifestyle in every season.

## VEGETATION

The area around Glimpse Lake sits within British Columbia's interior forest zone, creating a distinctive mix of grasslands and open forest that feels both rugged and sun-soaked. The dominant trees are widely spaced stands of ponderosa pine and Douglas fir, both well adapted to the region's warm summers.

These forests are typically open and parklike, allowing sunlight to reach the ground and support a rich understory. In cooler or slightly higher elevations, you may also find lodgepole pine and occasional spruce.

At lower elevations and on south-facing slopes, the landscape transitions into bunchgrass grasslands, with species like blue bunch wheatgrass and Idaho fescue. These areas are dotted with hardy shrubs such as sagebrush, rabbitbrush, and snowberry, which thrive in the dry conditions. In spring, these grasslands come alive with wildflowers—arrow leaf balsamroot, lupines, and Indian paintbrush adding bursts of colour.

Closer to the lake and in moist pockets, the vegetation becomes lush. You'll find willows, alders, and patches of aspen, along with a greener ground layer of grasses and sedges. These

riparian zones are important for wildlife and provide a noticeable contrast to the drier uplands.

Overall, the vegetation around Glimpse Lake reflects a balance between forest and grassland ecosystems—shaped by sun, elevation, and limited moisture—creating a diverse and visually striking natural environment that changes beautifully with the seasons.

## RECREATION

Glimpse Lake is particularly known for rainbow trout fishing, with fish commonly reaching up to about 3 lbs.

- Stocked and naturally productive trout fishery
- Quiet, low-traffic lake (electric motors only)
- Ideal for fly fishing, trolling, and shoreline casting

This waterfront property offers exceptional year-round recreation for the whole family. Summer days are spent swimming, kayaking, paddleboarding, and fishing for rainbow trout right from your doorstep, while surrounding trails invite hiking, biking, and ATV adventures. Fall brings crisp air and vibrant scenery, perfect for exploring the backcountry, hunting and enjoying quiet lakeside moments. In winter, the landscape transforms into a peaceful retreat ideal for snowshoeing, ice fishing, snowmobiling, cross-country exploring, and cozy weekends by the fire. Spring rounds it out with wildlife viewing, fresh blooms, and the return of fishing season—making this a true four-season escape.

## HISTORY

Early settlers moved into the region, drawn by its open range and water access. The area became tied to the development of large cattle ranches—most notably the nearby Douglas Lake Ranch, one

of the largest working cattle ranches in Canada. Glimpse Lake itself remained relatively untouched, used primarily for fishing and small recreational cabins rather than large-scale development.

Over time, the lake quietly evolved into a recreational retreat, valued for its tranquility, natural beauty. Unlike many more commercialized lakes in southern BC, Glimpse Lake has retained its low-density, off-the-radar charm—making it feel much the same today as it did decades ago.

## MAP REFERENCE

50°14'52.00"N and 120°17'11.06"W

## SERVICES

- BC Hydro
- Well
- Septic
- Internet

## IMPROVEMENTS

- Metal roof
- Landscaped mature yard
- Waterfront

## ZONING

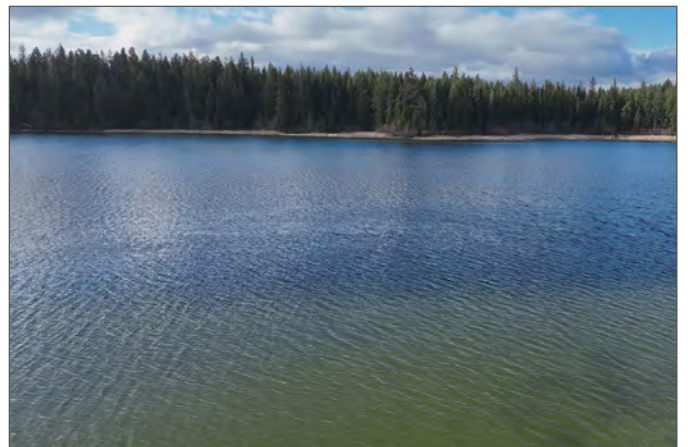
RL-1 (Thompson Nicola Regional District)

## LEGAL

LOT 7 DISTRICT LOT 3367 KAMLOOPS DIVISION  
YALE DISTRICT PLAN 26024

PID 004-588-037



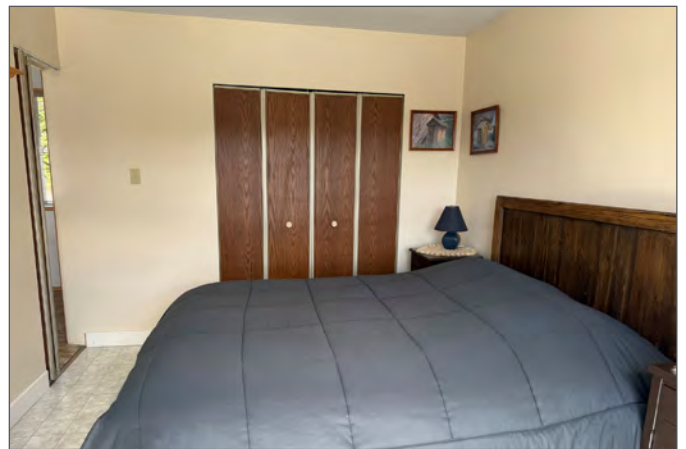


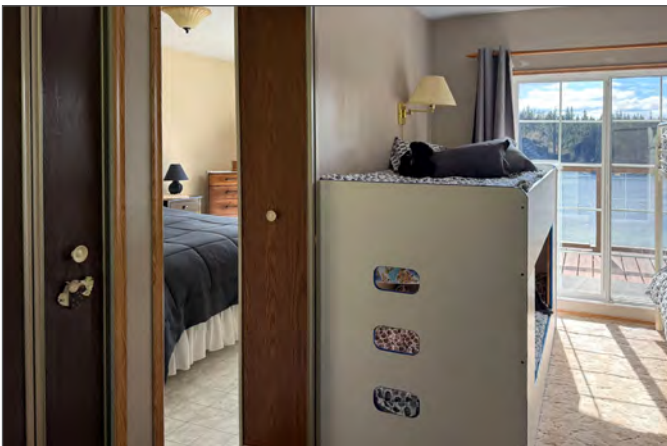
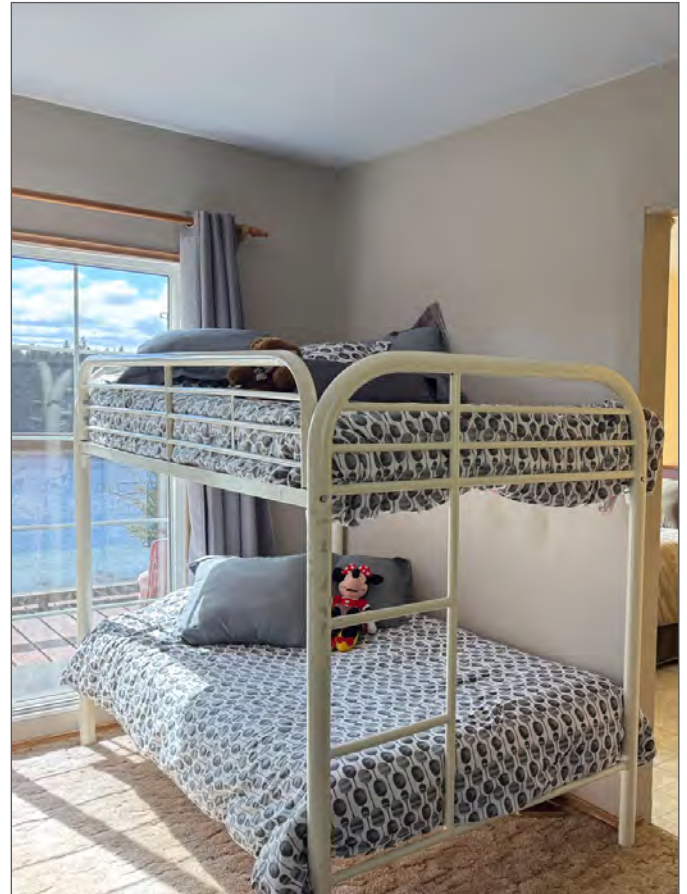
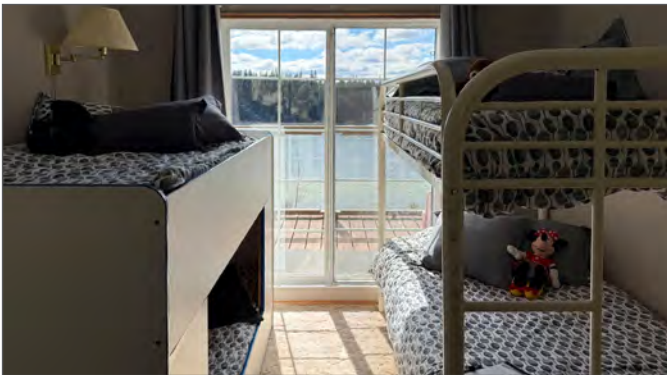


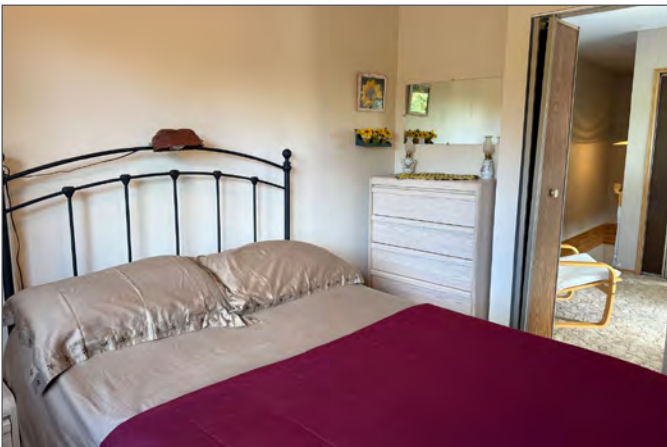




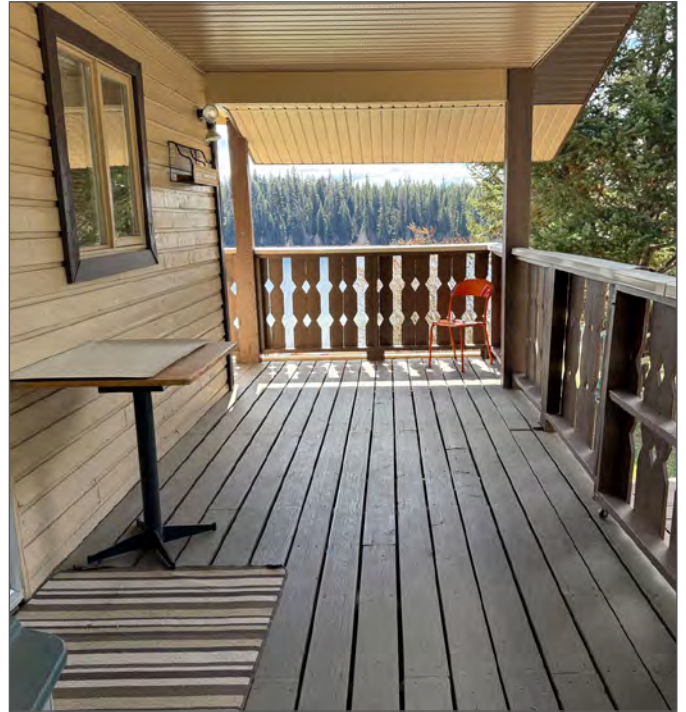


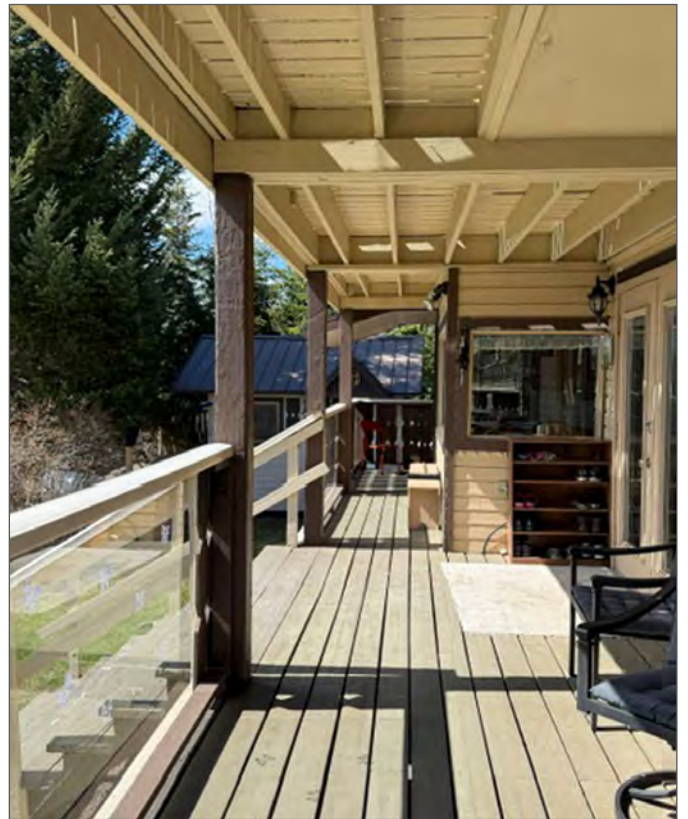


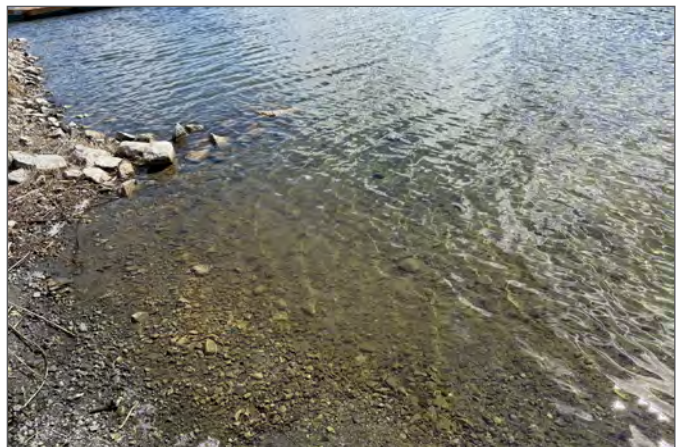
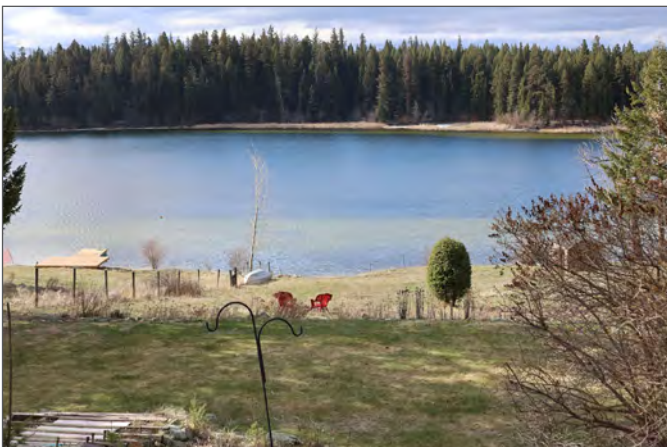


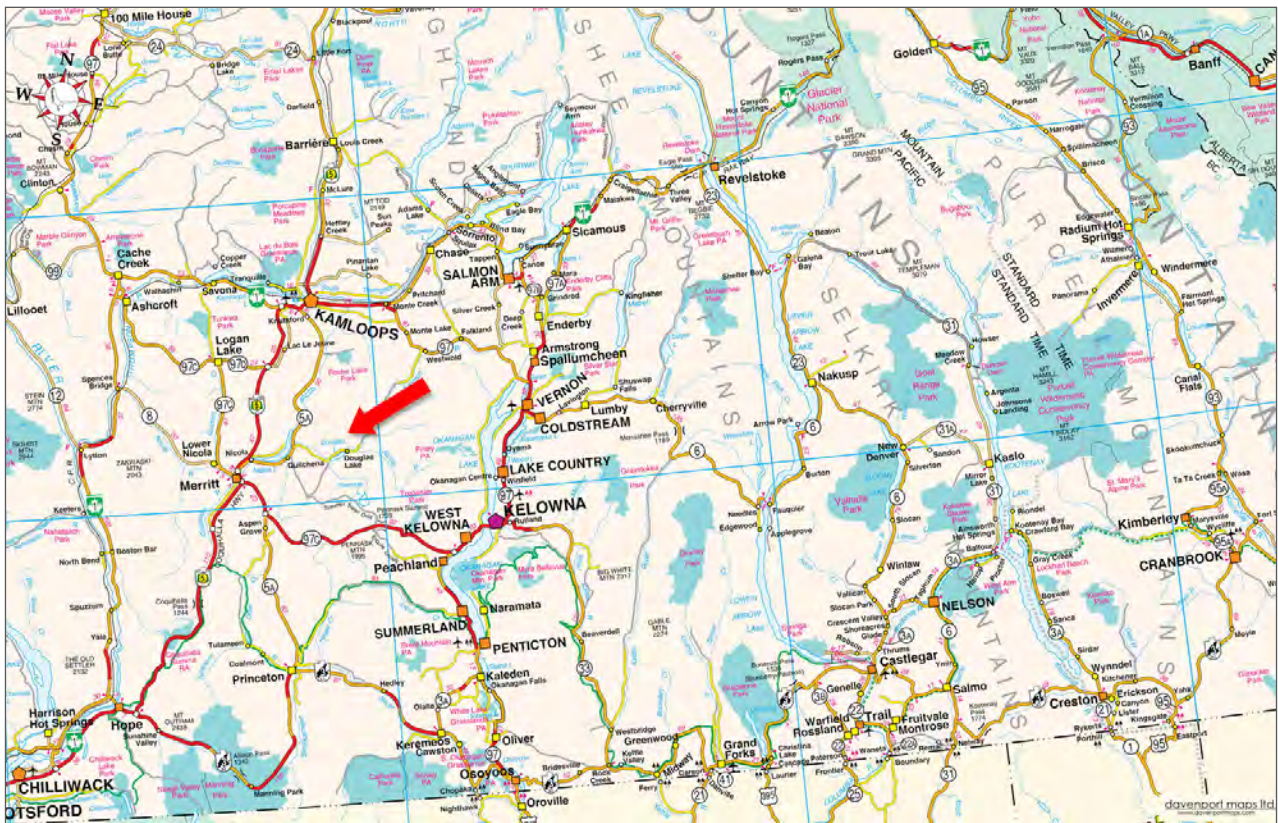


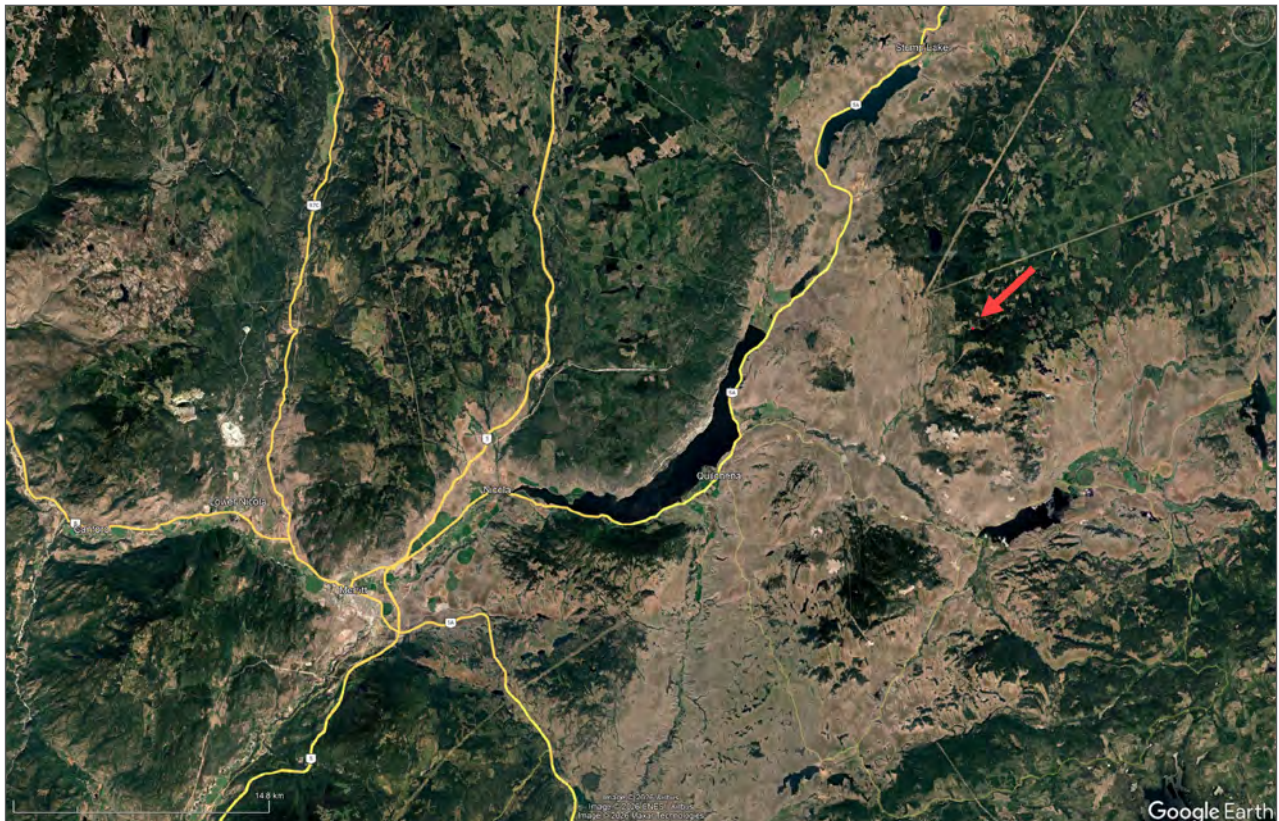














DataBC, Province of British Columbia | Esri | HERE, Garmin | INCREMENT P, NOAA, USGS, NAVCAN







Your Land. Your Legacy. Our Expertise.



[www.landquest.com](http://www.landquest.com)



**Valerie Kynoch**

Personal Real Estate Corporation

Representative

[val@landquest.com](mailto:val@landquest.com)

(250) 280-0994

---

LandQuest® Realty Corporation  
101 - 313 Sixth Street  
New Westminster, BC V3L 3A7

Phone: (604) 664-7630 Fax: (604) 516-6504  
Toll Free: 1-866-558-5263 (LAND)