



**Paradise on Vancouver Island's
West Coast - Bamfield, BC**



www.landquest.com

Kevin Kittmer
kevin@landquest.com
(250) 951-8631



Marketing British Columbia to the World®



“The Source” for Oceanfront, Lakefront,
Islands, Ranches, Resorts & Land
in British Columbia

www.landquest.com

Paradise on Vancouver Island's Rugged West Coast - Bamfield, BC

PROPERTY DETAILS

Listing Number:	25095
Price:	\$1,995,000
Taxes (2025):	\$6,290.41
Size:	0.33 of an acre

DESCRIPTION

Escape to your own spectacular waterfront retreat nestled in the serene beauty of Bamfield's Grappler Inlet. This magnificent 4,200 sq. ft. log home sits on a 1/3-acre lot, offering protected moorage and instant access to world-class ocean adventures, paired with the peaceful charm of coastal living.

Crafted to blend natural elegance with modern comfort, this one-of-a-kind home features an open-concept design with grand vaulted ceilings, soaring full-height windows to maximize views, and a spacious layout offering 5 bedrooms and 6 bathrooms. A large concrete deck off the main level overlooks the inlet, perfect for entertaining or simply soaking in the tranquil surroundings. The upper level boasts an expansive games room and a luxurious master suite.

The lower-level houses a fully self-contained 3-bedroom, 3-bathroom suite with a walk-out patio, currently being utilized as guest accommodation for a thriving Fishing Charter business.

A pathway from the patio leads down to the 85 ft dock, complete with a commercial foreshore lease. The dock includes a floating utility shed for secure gear storage and ample space for fishing boat moorage.

With endless potential, this unique property could serve as your private coastal residence, a corporate getaway, or the cornerstone of a home-based business.

Bamfield is the gateway to the stunning Broken Group Islands in Barkley Sound and one of Vancouver Island's last remaining undeveloped coastal treasures. With recent upgrades to the main access road from Port Alberni, now is the time to invest in this hidden gem before demand soars.

LOCATION

326 Tower Road - Bamfield, BC

DIRECTIONS

Bamfield lies approximately 89 kilometres southwest of Port Alberni and 123 kilometres northwest of Lake Cowichan.

Call the listing agent for detailed directions and to arrange a tour. All visits must be made by appointment in advance.

AREA DATA

Bamfield is a small coastal community located on the west coast of Vancouver Island. Situated on Barkley Sound, it serves as a gateway to the Broken Group Islands and is adjacent to the Pacific Rim National Park Reserve. The community is divided by the Bamfield Inlet into East Bamfield and West Bamfield. The west side of the village offers a waterfront boardwalk that connects all the homes and docks on the harbour. On the east side of Bamfield you'll find local businesses that include a friendly pub, a food market and café.



VEGETATION

British Columbia's west coast vegetation is characterized by lush temperate rainforests, home to towering conifers like Douglas fir, western red cedar, and Sitka spruce, which thrive in the region's moist, mild climate. The forest floor is often carpeted with a rich underbrush of ferns, salal, and mosses, with large leafy specimens of broadleaf maple and red alder providing a deciduous contrast to the evergreens.

RECREATION

Bamfield offers a variety of recreational activities for outdoor enthusiasts and nature lovers including beachcombing, hiking, paddle boarding and kayaking, whale watching and wildlife tours and the Bamfield Marine Sciences Centre.

If you're seeking unparalleled fishing, look no further than Barkley Sound. At various times of the year, there are Chinook, coho, sockeye, pink, chum salmon and even albacore tuna. Bottom fish include halibut, ling cod, sole, greenling, sea bass, cabezon and several varieties of rockfish.

HISTORY

The area now known as Bamfield has been home to the Huu-ay-aht First Nations, part of the Nuu-chah-nulth peoples, for thousands of years. Their ancestral village, Kiiḡin, located near present-day Bamfield, features remnants of longhouses and is recognized as a National Historic Site of Canada.

Between 1859 and 1862, William Eddy Banfield, an English trader and government agent, established a trading post in the area. The community was later named "Bamfield," a variation of Banfield's name, possibly due to pronunciation by the Huu-ay-aht or a clerical error.

In 1902, Bamfield became the western terminus of the All Red Line, a 6,437-kilometre undersea telegraph cable connecting Canada to Australia via British territories. This made Bamfield a critical node in global communications within the British Empire. The cable station operated until 1959, after which the facility was repurposed.

Following the closure of the cable station, the site was transformed into the Bamfield Marine



Sciences Centre (BMSC) in 1972. Established by a consortium of five Western Canadian universities, BMSC serves as a hub for marine biology research and education, attracting students and scientists worldwide.

In 1907, Bamfield became home to Canada's first Pacific Coast lifesaving station, addressing the dangers of the treacherous coastline. That same year, the West Coast Trail was developed to assist shipwreck survivors in navigating the rugged terrain to safety. Today, this 77-kilometre trail is a renowned hiking destination.

MAP REFERENCE

48°49'44.07"N and 125° 7'28.87"W

INVESTMENT FEATURES

- Fishing/wildlife charter business - negotiable
- Bed and Breakfast
- Short-term rentals

SERVICES

- Hydro
- Cable
- Internet
- Municipal water
- Septic system
- Private dock

IMPROVEMENTS

- 4,200 sq. ft. log home
- 85' dock with Commercial Foreshore Lease

ZONING

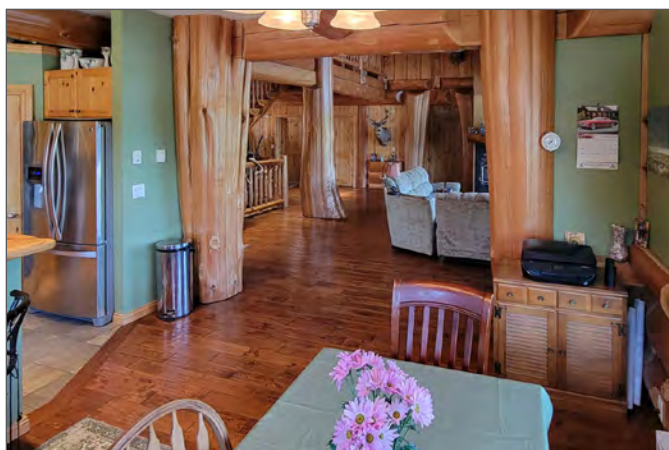
RA 2- Acreage Residential

LEGAL

Lot 8, Section 20, Township 1, Plan VIP3770, Barclay Land District

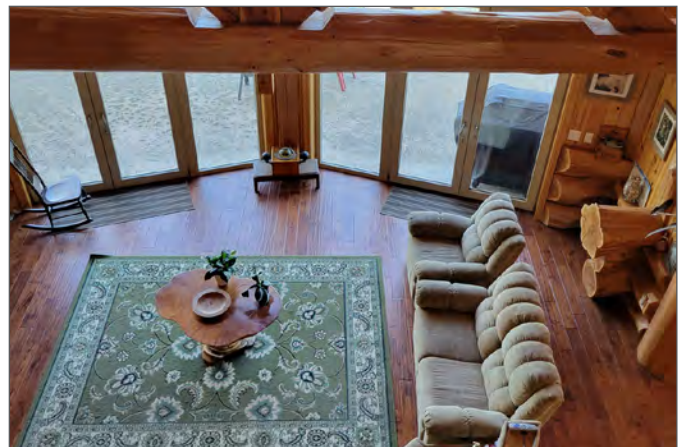
PID 006-144-705

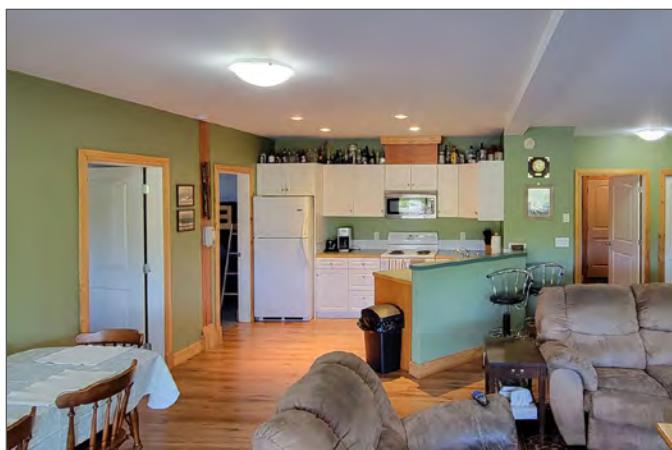


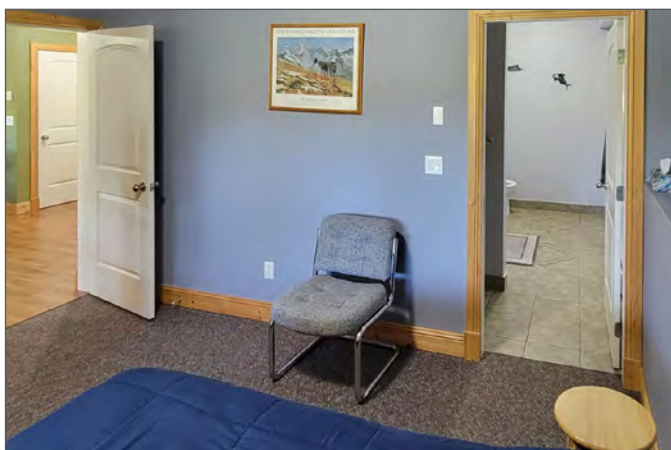
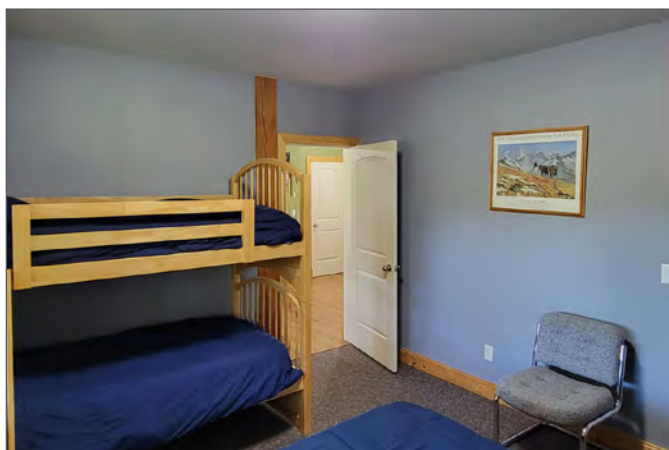
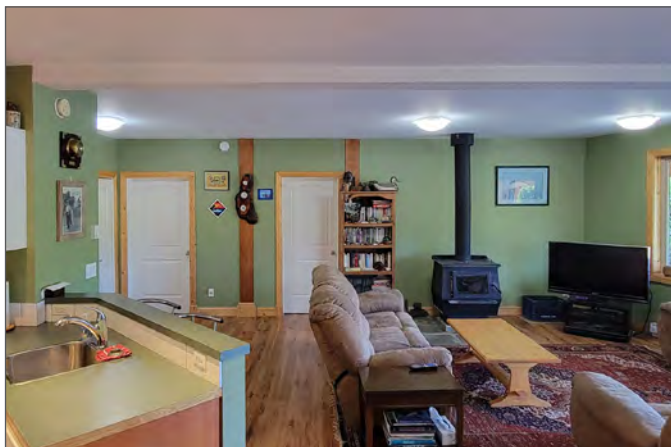


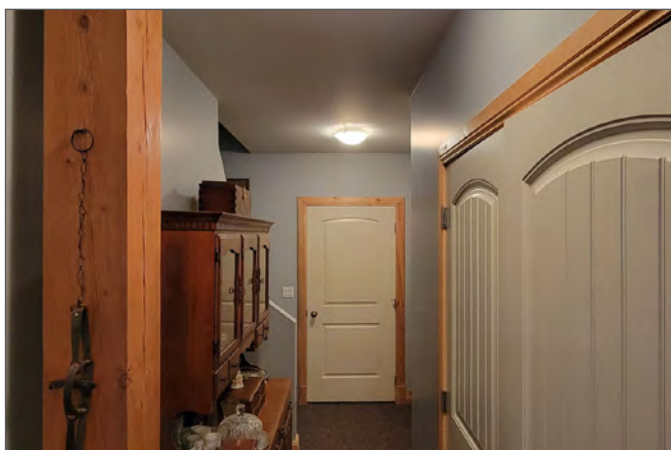


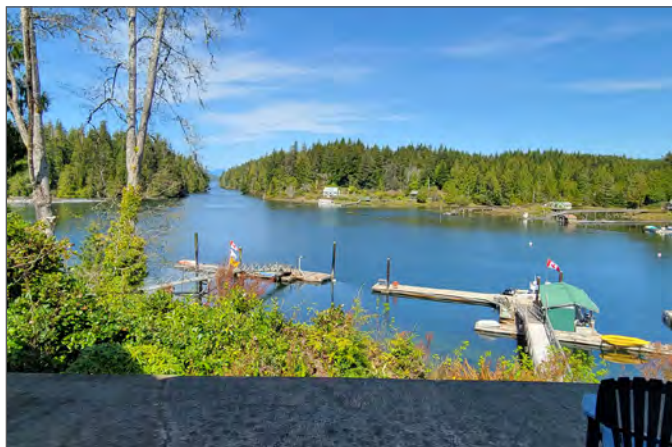
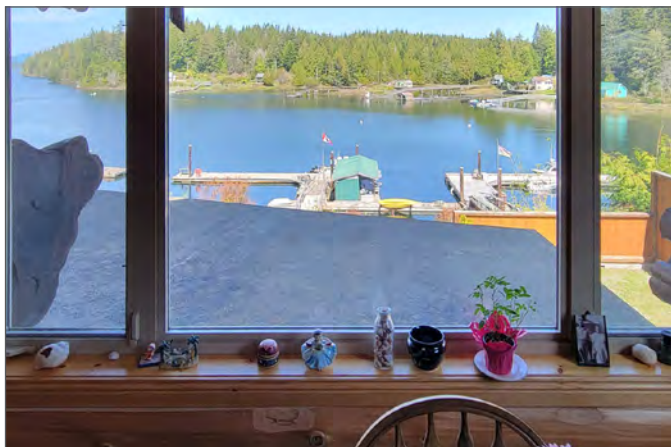


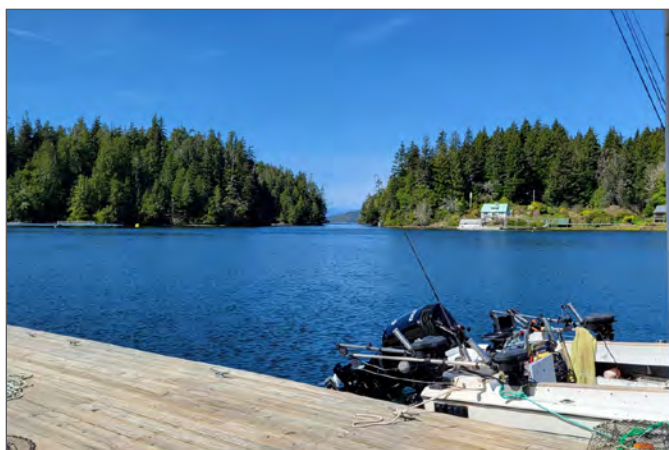
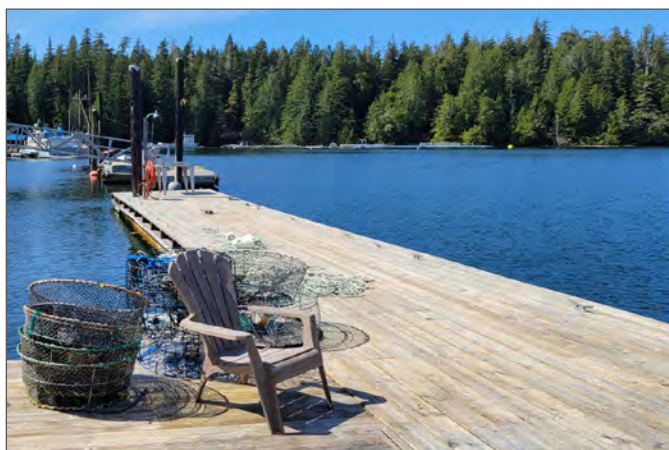


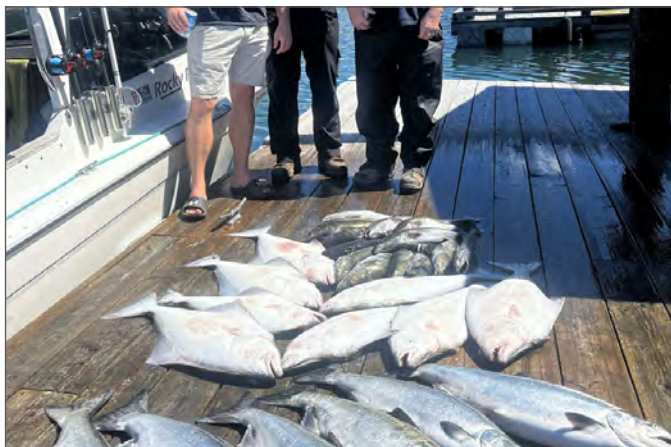


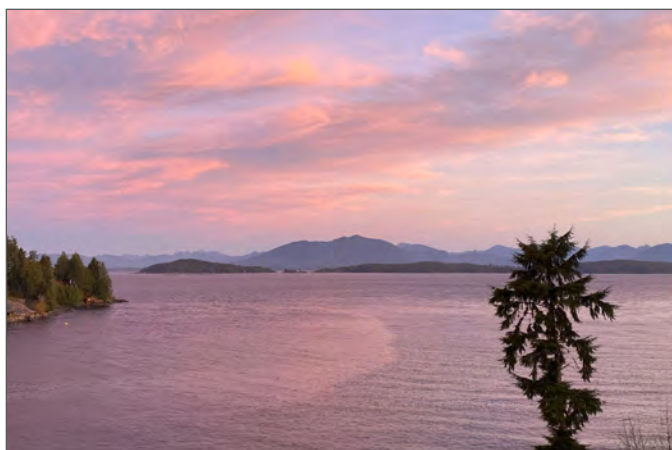
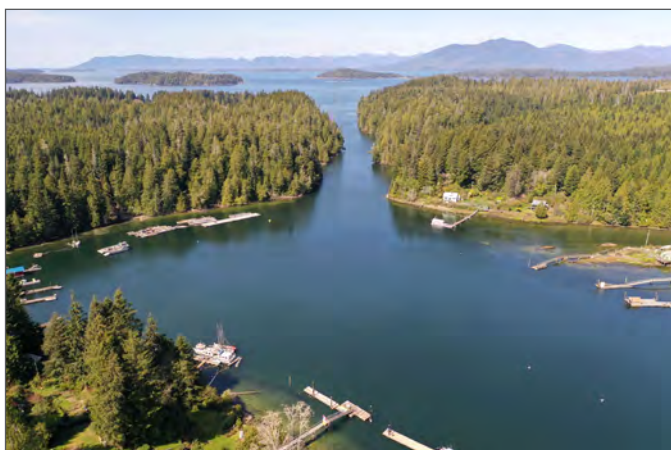
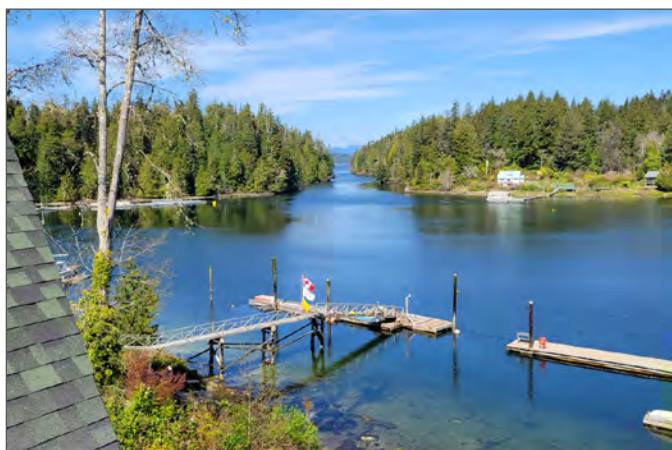
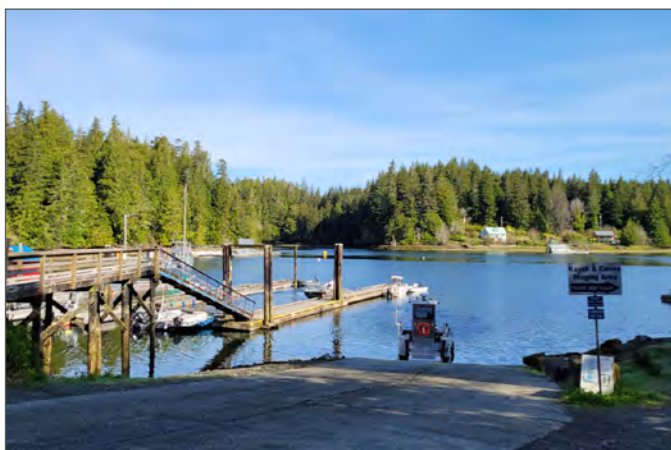


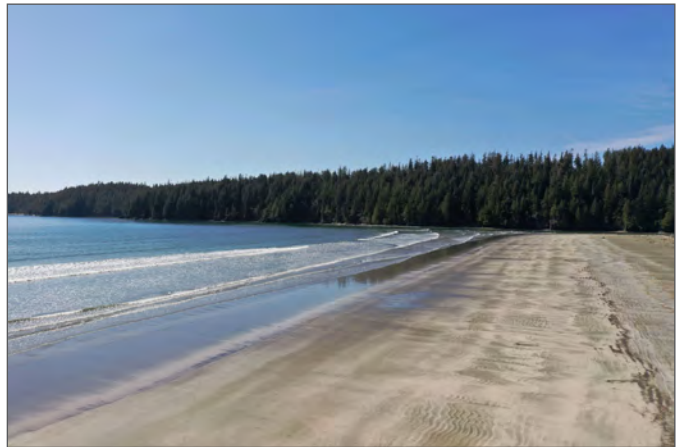
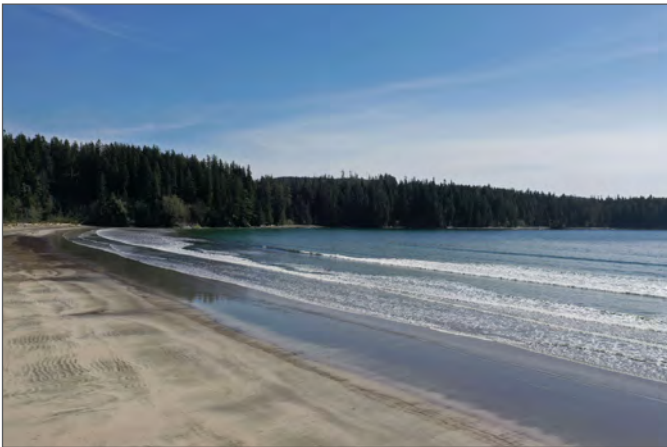


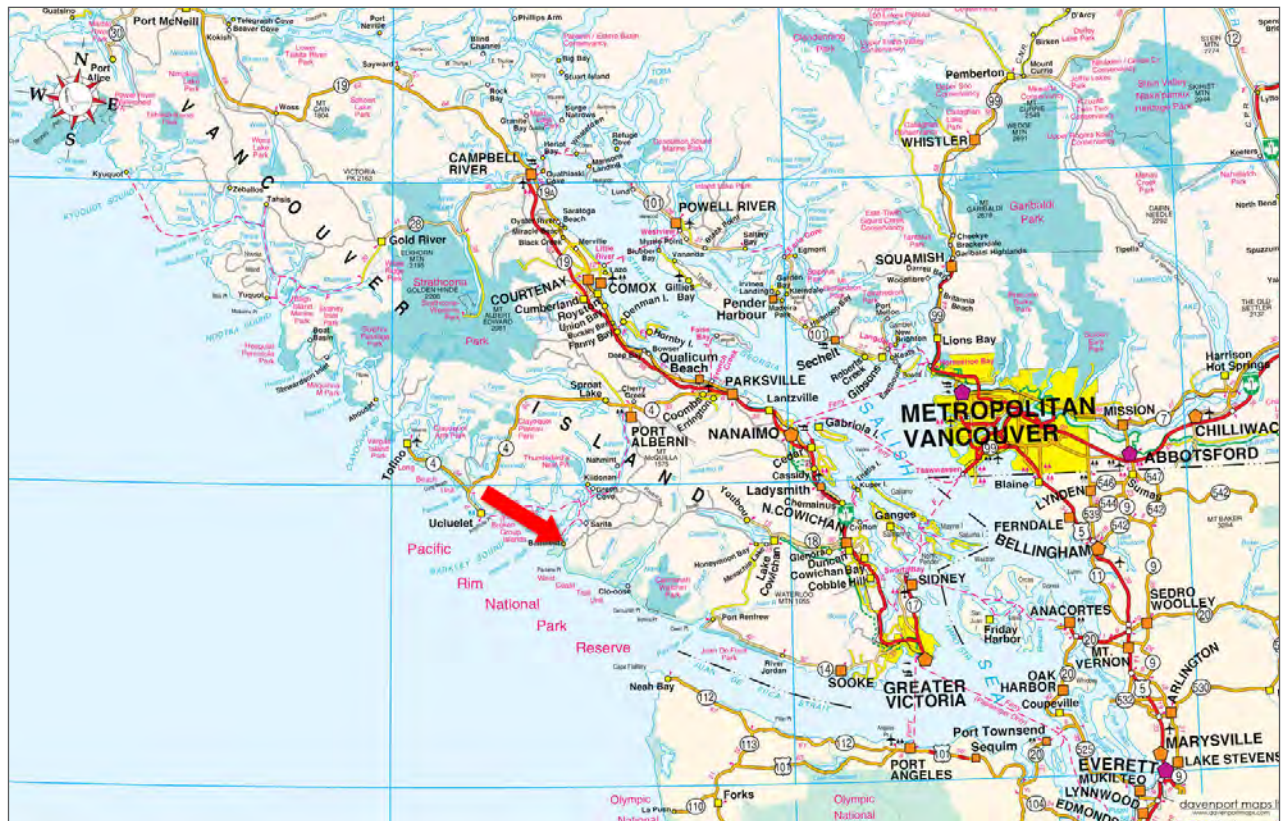
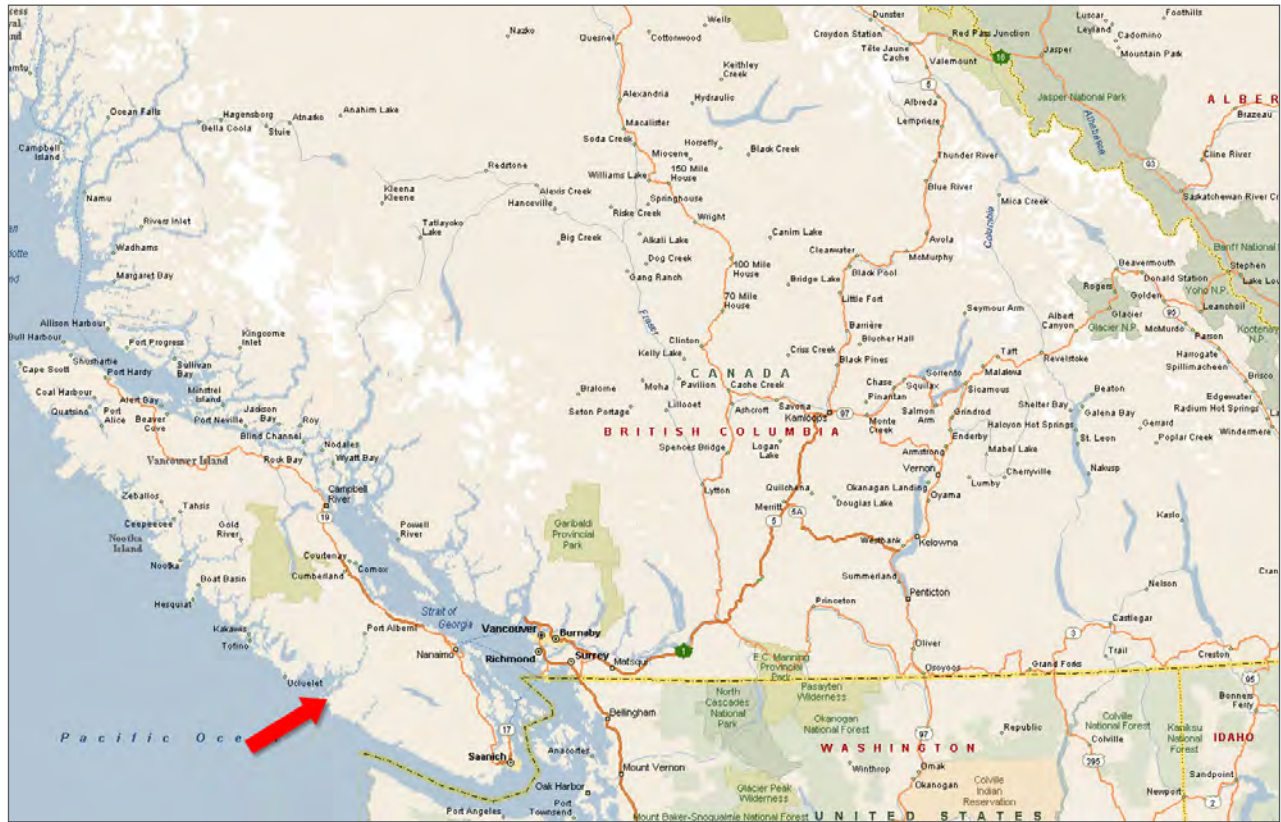


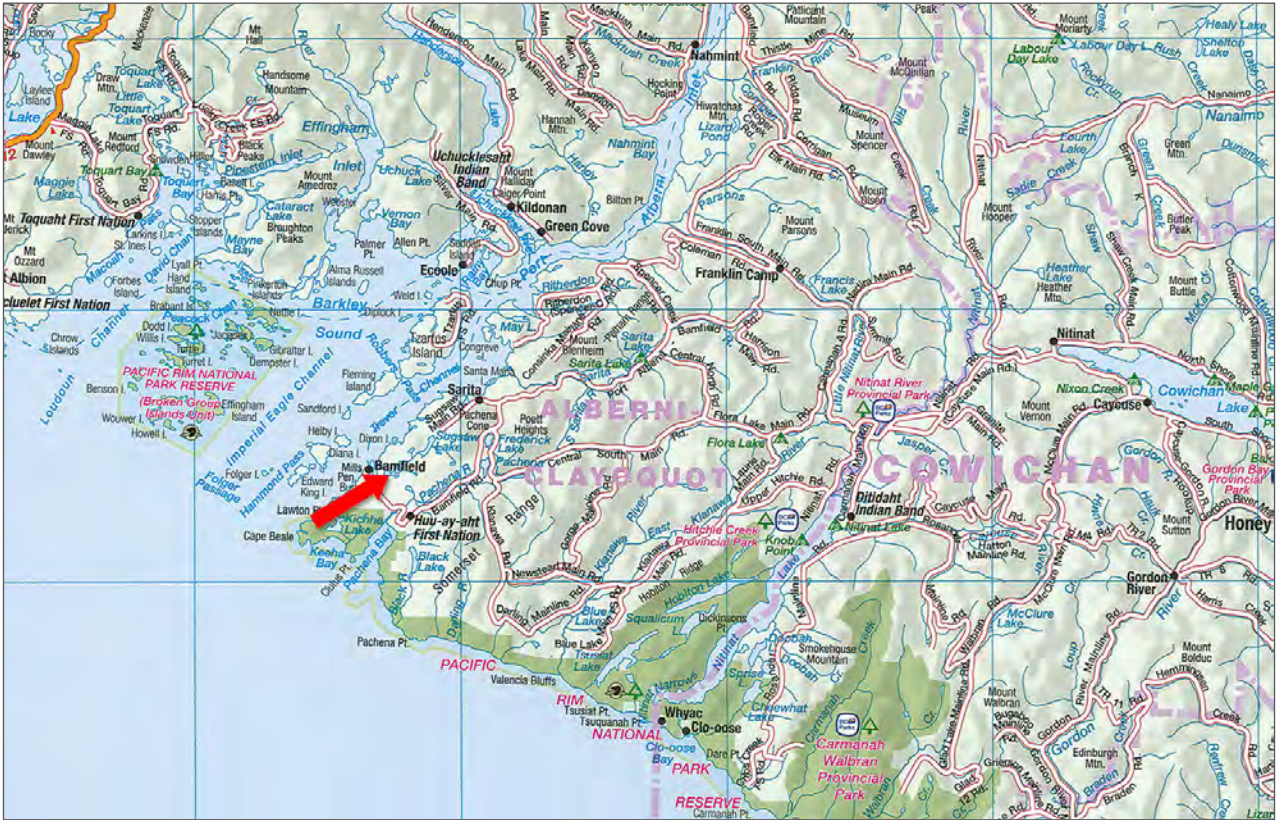


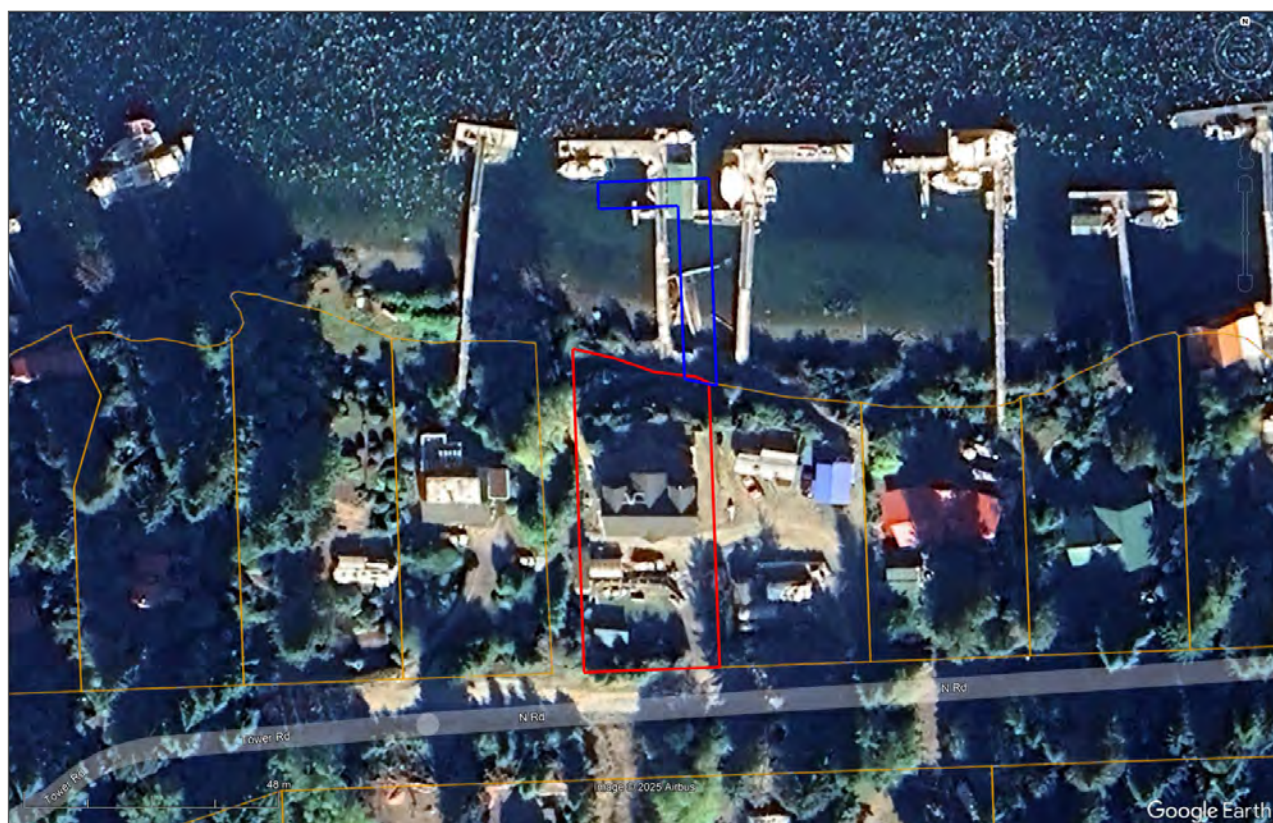
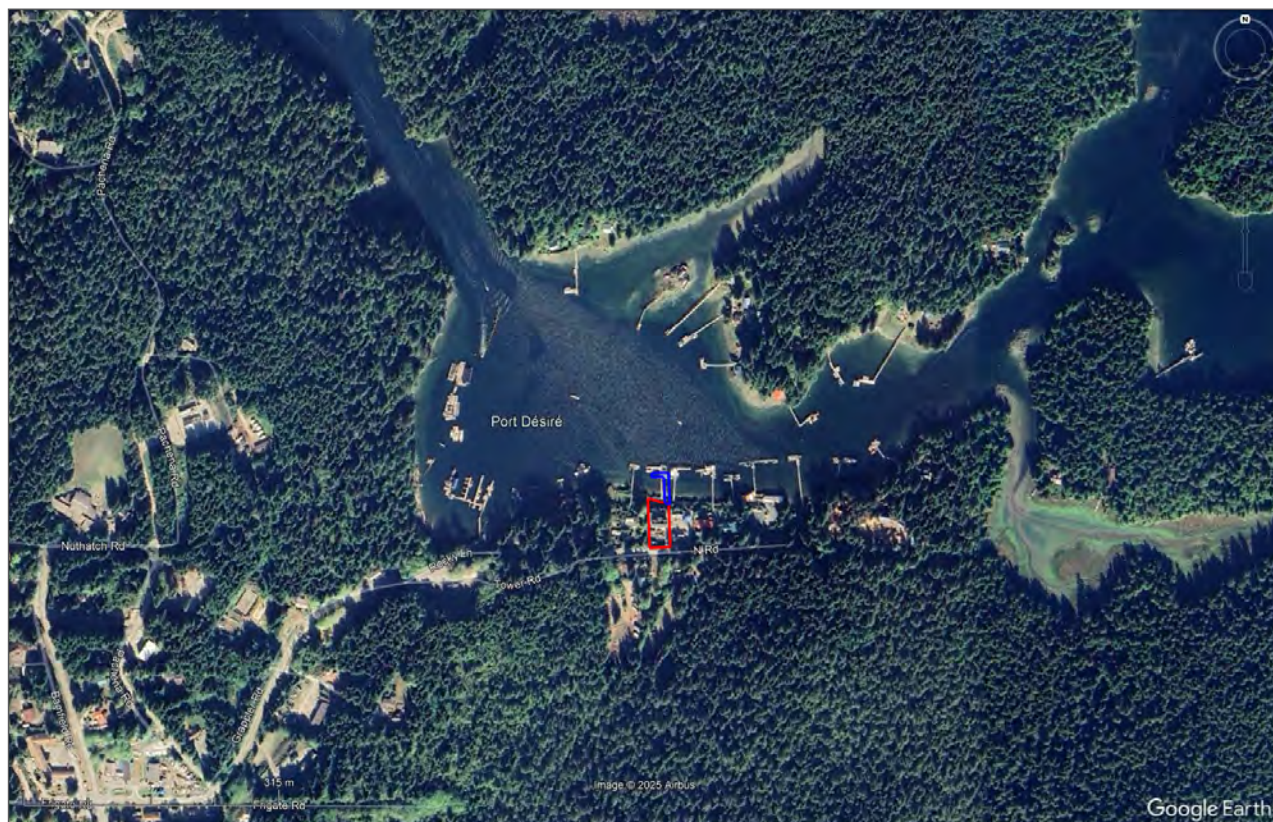


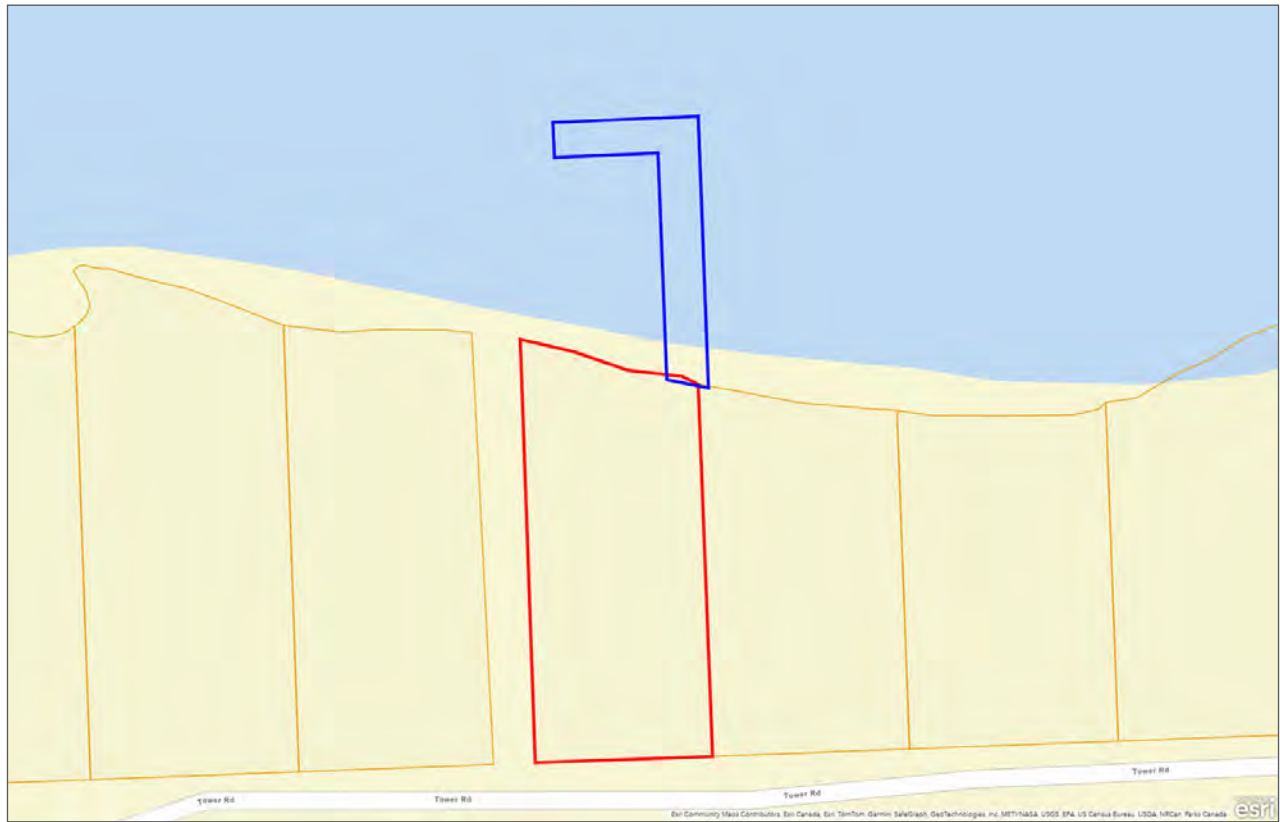












[illegible]



Marketing British Columbia to the World®



www.landquest.com



Kevin Kittmer

Representative
kevin@landquest.com
(250) 951-8631

LandQuest® Realty Corporation
101 - 313 Sixth Street
New Westminster, BC V3L 3A7

Phone: (604) 664-7630 Fax: (604) 516-6504
Toll Free: 1-866-558-5263 (LAND)

Our property descriptions and geographical information are taken from the BC Assessment Authority, Land Titles Office, government maps and other sources. While LandQuest® does not guarantee the information, we believe it to be accurate, but should not be relied upon without verification. This communication is not intended to cause or induce breach of an existing agency agreement. This property is listed on the MLS®. The trademarks MLS®, Multiple Listing Service® and the associated logos are owned by The Canadian Real Estate Association (CREA) and identify the quality of services provided by real estate professionals who are members of CREA.