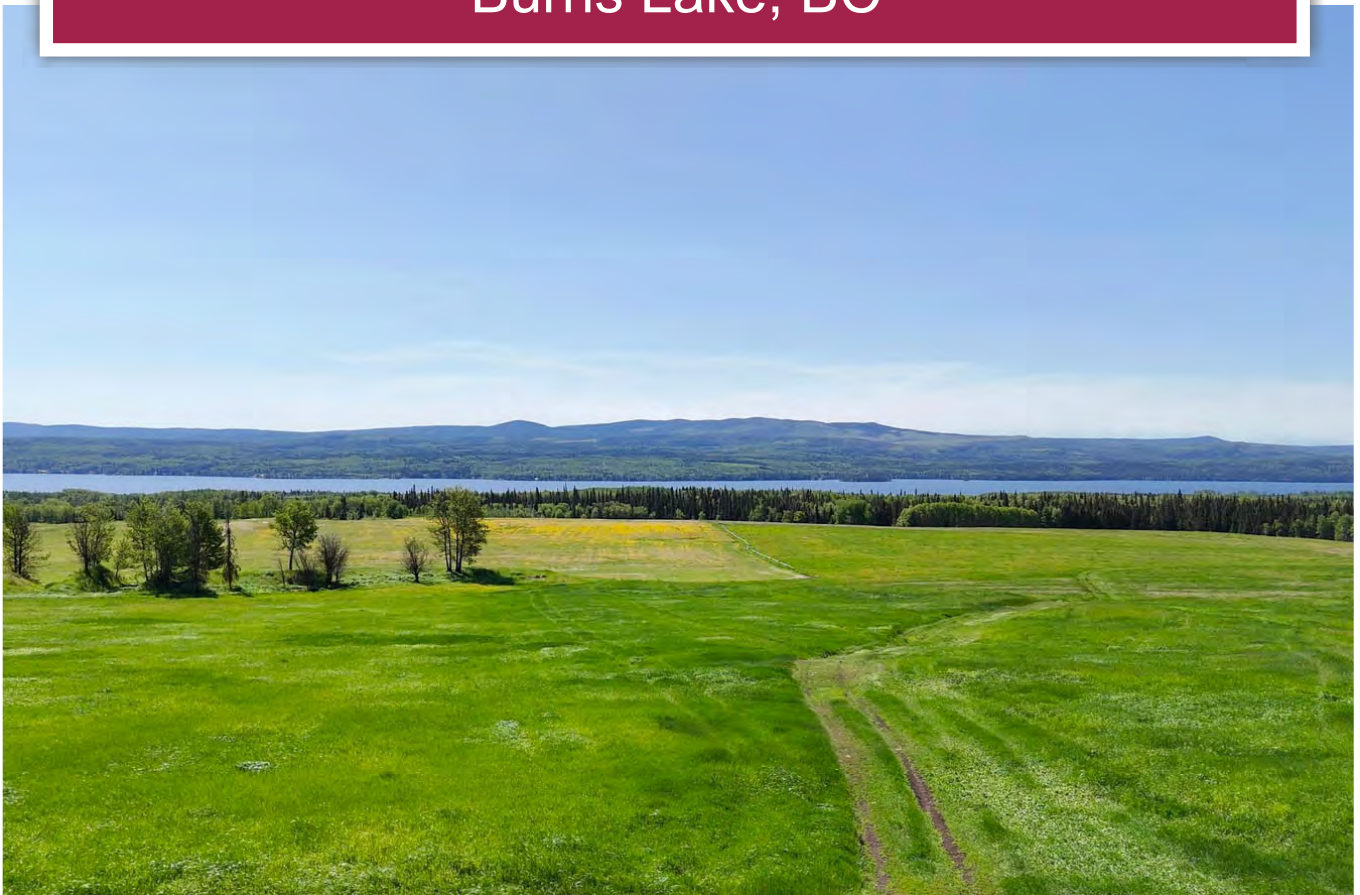




Seven-Up Ranch

Burns Lake, BC



Chase Westersund
Personal Real Estate Corporation
chase@landquest.com
(778) 927-6634



WESTERN LAND GROUP

Cole Westersund
Personal Real Estate Corporation
cole@landquest.com
(604) 360-0793



Marketing British Columbia to the World®



“The Source” for Oceanfront, Lakefront,
Islands, Ranches, Resorts & Land
in British Columbia

www.landquest.com

Seven-Up Ranch

Burns Lake, BC

PROPERTY DETAILS

Listing Number:	25142
Price:	\$4,500,000
Taxes (2025):	\$1,312
Zoning:	Agriculture

SIZE

- Approx 3,048 acres deeded, 18 titles
- Approx 1,600 acres leasehold
- Approx 19,000 acres Crown grazing licence

DESCRIPTION

Set against the breathtaking backdrop of Francois Lake in British Columbia's storied ranching country, the Seven-Up Ranch is a meticulously managed and highly productive cattle operation spanning 3,048 deeded acres across 18 separate titles. This turnkey ranch also includes a contiguous 1,600-acre leasehold property and adjacent Crown range with 600 AUMs, forming an efficient, large-scale land base ideally suited for a sustainable livestock enterprise.

The ranch is currently home to a Red Angus/Charolais cross herd and has historically supported up to 400 cow/calf pairs, with 160 currently being run. Supporting infrastructure includes two 120' x 40' hay barns, a 120' x 40' calving barn, full cattle-handling facilities, and approximately 5 km of fencing on the Crown range. All deeded land is fenced and cross-fenced for efficient grazing management.

Water is a critical asset on any cattle operation, and the Seven-Up Ranch is exceptionally well supplied. The property holds multiple water licences, two drilled wells, and a gravity-fed dam servicing the corrals and barns. Additional dugouts on the deeded land and abundant natural water sources across the range ensure excellent livestock hydration and irrigation potential.

Approximately 800 acres are in hay production, yielding an average of 1,200 large bales annually. An additional 100 acres are in grain, primarily used for silage. The leasehold and range parcels adjoin the deeded land, creating a cohesive, functional operational footprint.

At the current price, the ranch is offered as a share sale inclusive of all cattle and equipment, providing a rare opportunity to acquire a fully operational, ready-to-run ranch.

Included livestock inventory:

- 160 preg-checked cows
- 24 preg-checked heifers
- 25 heifer cows
- 14 bulls

Included equipment (sold as-is, where-is):

- JD 7800 Tractor - 1998
- JD 7600 Tractor - 1994
- JD 7400 Tractor - 1994
- 2022 JD Swather C400
- Swather - older
- 2018 JD 560M Round Baler
- New Holland Round Baler - older
- 950 Loader
- 640 Line Skidder



- Grapple Skidder
- D7E CAT
- Bobcat - older
- Sawmill and planer
- 2016 Arctic Cat ATV
- 2006 Ford F350 Pickup
- 2017 GMC Pickup
- 1978 GM 6500 Dump Truck
- Stock Trailer
- 20' Gooseneck Flat Deck Trailer
- Two hay-hauling trailers
- Sprayer
- 750 Seed Drill
- Kello-Bilt Model 210 Disk
- Medium disk
- Highline XL-78 Rock Picker (like new)
- Manure spreader
- New Holland silage chopper
- Crawford's Hi-Dump

With deep ranching roots, this region of north-central BC is known for its multigenerational cattle families, reliable water, and long growing seasons. Francois Lake adds both stunning scenery and moderating climatic influence, extending productivity.

Offered as a share sale with cattle and equipment included in the asking price, this is a rare opportunity to acquire a complete, fully functional ranch in one of British Columbia's most scenic and agriculturally rich landscapes.

LOCATION

Located in the Colleymount area on the north shores of Francois Lake, BC

DIRECTIONS

Contact Listing Agent.

AREA DATA

The Burns Lake area, situated within the Regional District of Bulkley-Nechako, has a long-standing tradition of ranching, with a mix of multigenerational family operations and new entrants drawn by affordable land and strong water access. Ranching here typically focuses on cow/calf operations, hay production, and some mixed-use grazing.

Key Agricultural Data

- Primary Land Use: cattle ranching, hay production, forage crops, and some grain silage.
- Average farm size: approximately 820 acres (significantly above the provincial average).
- Total Agricultural Land Base (Bulkley-Nechako): over 1.2 million acres, with a large portion in the Burns Lake-Francois Lake corridor.
- Number of farms (census region): ~675
- Top commodities:
- Cow/calf beef operations
- Hay and fodder production (grass-legume mixes)
- Limited grain/silage crops (barley, oats)

Growing Conditions and Climate

- Moderate climate moderated by Francois Lake
- Long daylight hours in summer and reliable precipitation
- Non-irrigated hay yields in the area typically range from 1.5 to 2.5 tons per acre, depending on field quality and management practices

Cattle Production

- Cow/calf pairs typically grazed on deeded and Crown land with grazing leases and AUM-based range tenures
- Red and Black Angus dominate the local herd genetics, with increasing use of Charolais and Simmental for terminal crosses
- Calves are usually sold in fall at regional auction marts or via direct-to-buyer programs

Access to Services

- Burns Lake serves as the regional service hub, offering access to veterinary services, feed suppliers, livestock transportation, and auction support



- The area is supported by the BC Livestock Producers Co-op (Prince George), and Nechako Valley Auction Mart (Vanderhoof)

RECREATION

Francois Lake is not only a prime location for ranching but also a destination for exceptional outdoor recreation. The lake itself is renowned for year-round fishing, offering abundant rainbow trout and lake char. Boating, kayaking, and swimming are popular in the warmer months, while ice fishing and snowmobiling take over in winter.

The surrounding wilderness is a haven for hunters, hikers, and wildlife enthusiasts. The ranch and adjacent Crown land offer excellent hunting opportunities, including a healthy population of big bull elk, which are frequently seen on the property. Moose, deer, and black bear are also common throughout the area, making this a true four-season recreational paradise.

With direct access to trails, lakes, and expansive forest, the Francois Lake area is ideal for horseback riding, ATVing, and backcountry exploration—providing endless opportunities to enjoy the natural beauty and rich wildlife of northern British Columbia.

HISTORY

Francois Lake is the second-longest natural lake in British Columbia, stretching approximately 110 kilometres through the Bulkley-Nechako region. The lake became a key geographic feature during early European exploration and fur trade activity in the late 19th and early 20th centuries. Its name, "Francois," is believed to originate from French-speaking voyageurs or settlers and was likely a reference to the Catholic presence in the region during early missionary activity.

In the early 1900s, settlers were drawn to the lake's fertile shorelines and moderate climate, which proved ideal for homesteading, hay production, and cattle ranching. The arrival of the Grand Trunk Pacific Railway to nearby communities accelerated access to markets and supplies. Ranches and agricultural operations developed on the lake's south shore, with Francois Lake becoming a long-standing hub for cattle, logging, and lake-based transportation.

The lake has long been recognized for its scenic beauty, reliable water sources, and temperate microclimate, which have all supported sustainable ranching and farming over the past century.

Burns Lake, located just north of Francois Lake, began its development in the early 1900s as a strategic midpoint for settlers and transportation routes along the Grand Trunk Pacific Railway. Named after Michael Byrnes (with the spelling later anglicized to "Burns"), a railway construction worker, the community evolved from a rail stop to a service and supply centre for the surrounding agricultural and forestry industries.

As the railway brought greater accessibility, settlers established farms, ranches, and mills throughout the area. By the mid-20th century, Burns Lake had grown into a small but vital regional centre supporting logging operations, cattle ranching,

and small-scale farming. With the development of Highway 16, the town's role as a transportation and commerce hub continued to expand.

Today, Burns Lake remains a central service community for surrounding rural and agricultural properties, including those on Francois Lake, and plays an important role in the region's ranching economy.

MAP REFERENCE

54° 3'16.88"N and 126° 9'21.58"W

INVESTMENT FEATURES

- 600 AUM Crown Grazing Licence
- Multiple water licences
- 1,600-acre leasehold
- 800 acres in hay production - produces approx. 1,200 round bales
- 100 acres seeded in grain - baled for silage
- All cattle and equipment

SERVICES

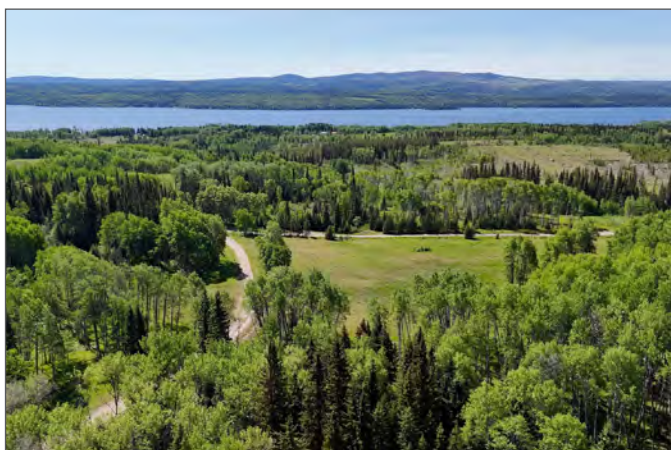
Power available.

IMPROVEMENTS

- Two 120' x 40' hay barns
- One 120' x 40' calving barn
- Full cattle handling facilities
- Approximately 5 km of fencing on the Crown range
- Fencing and cross-fencing on all deeded land
- Two drilled wells
- Gravity-fed dam servicing corrals and barns
- Dugouts on deeded land

LEGAL

Lengthy legals, please contact agent for legal descriptions.







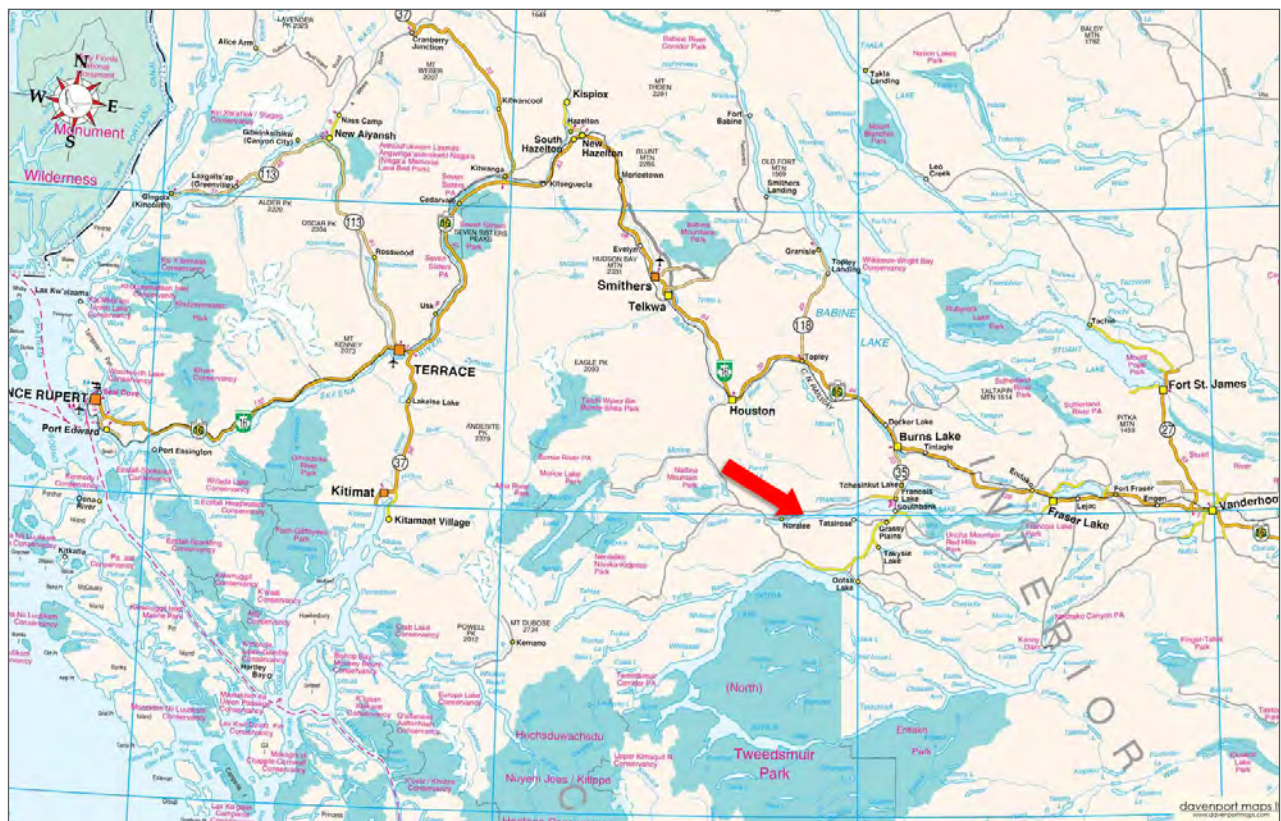


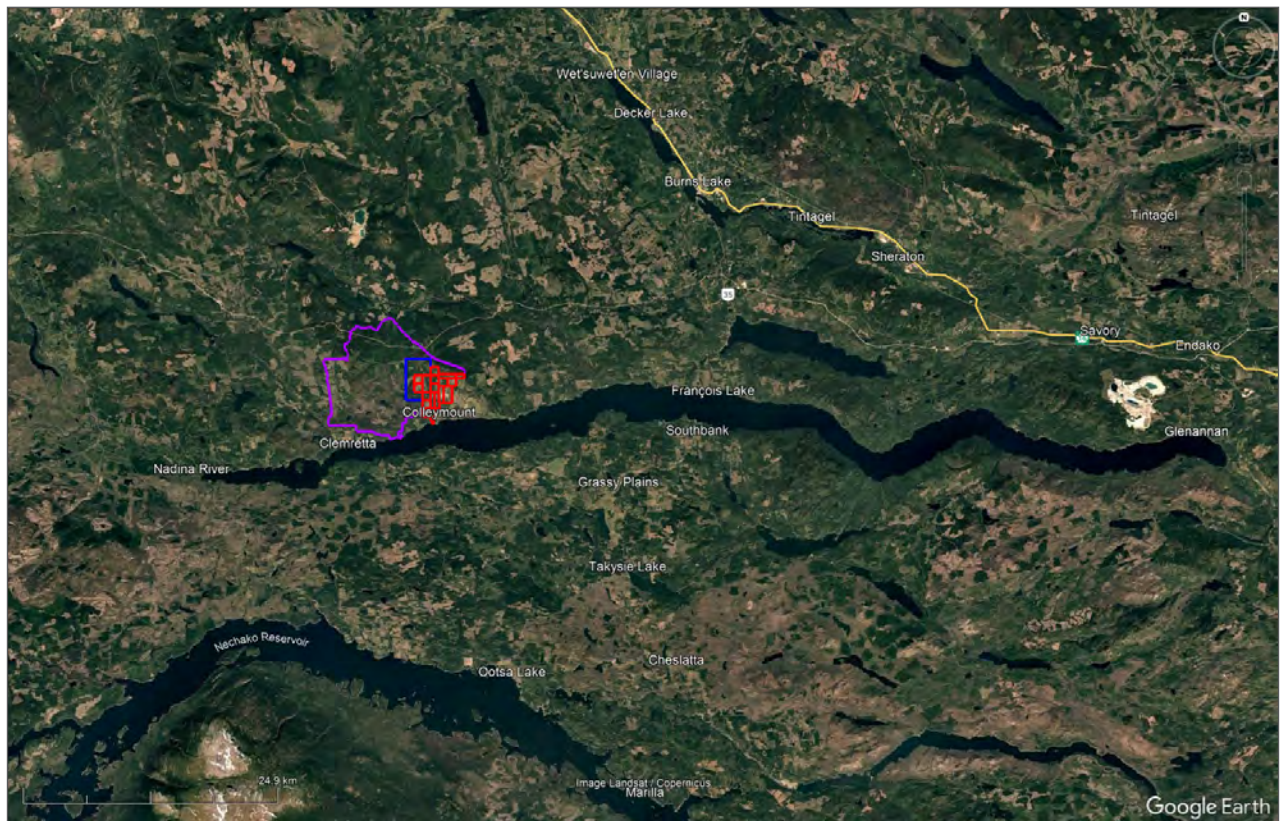
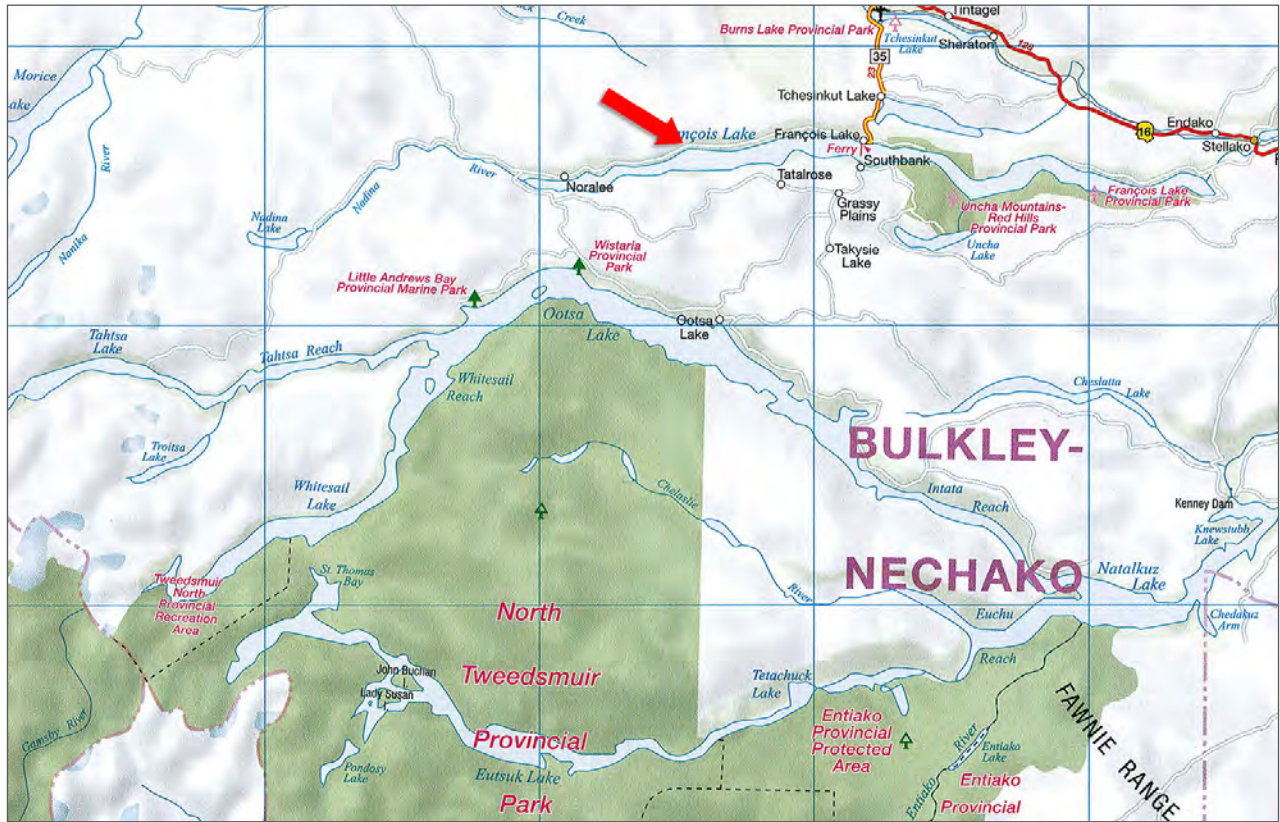


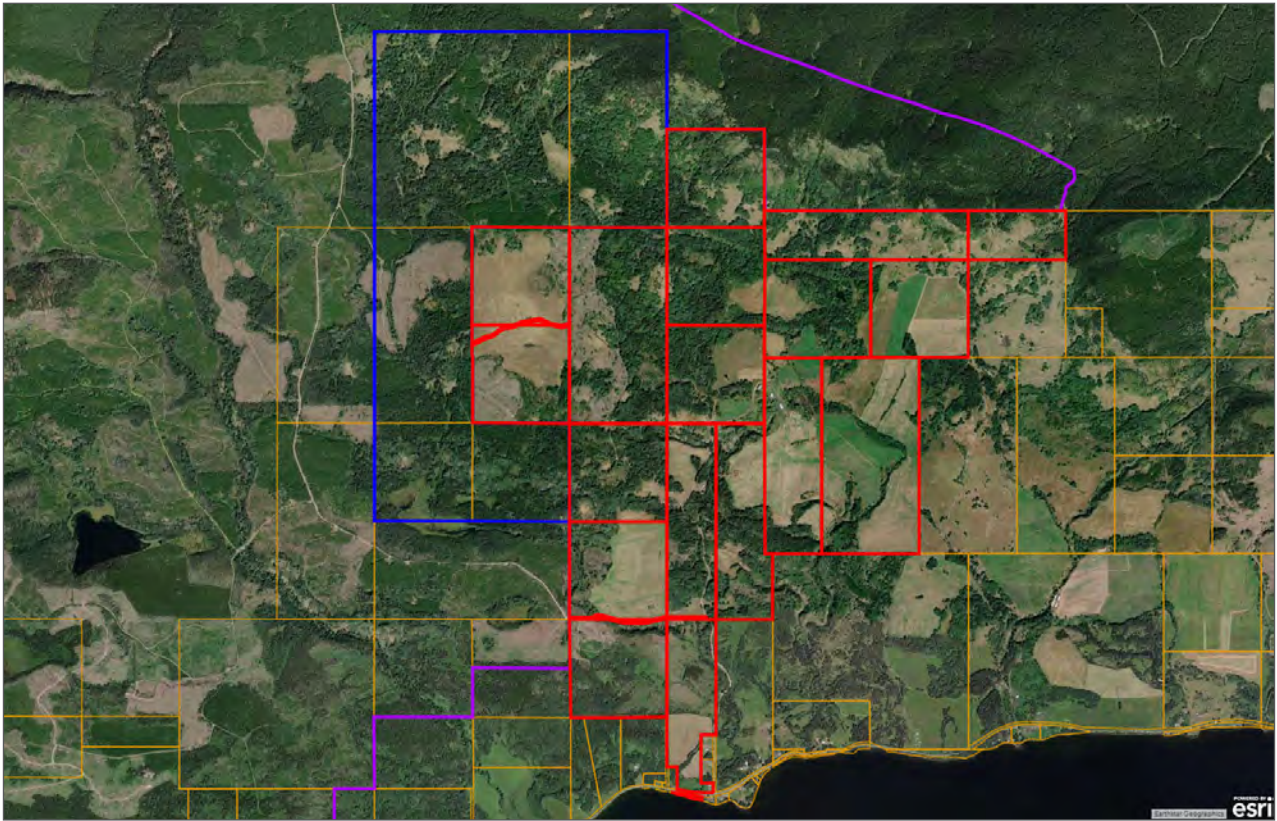


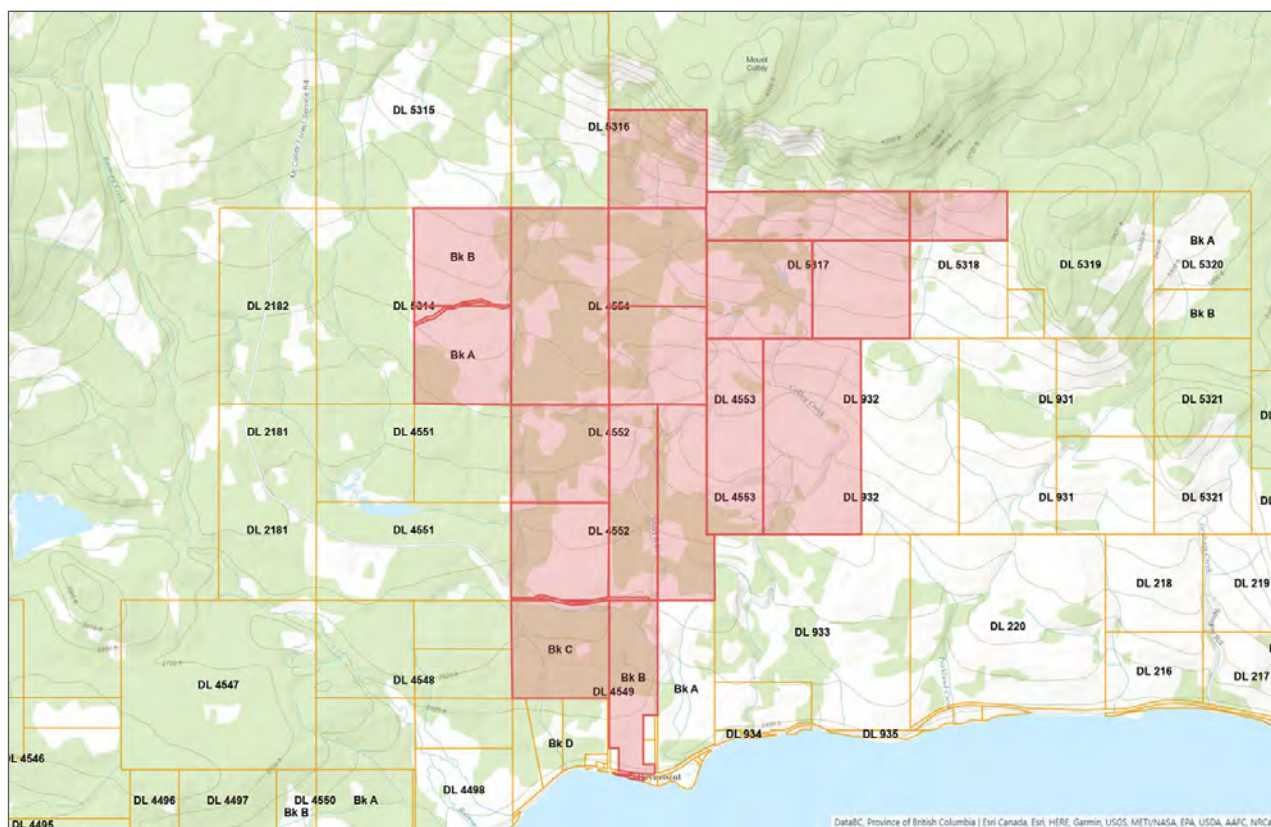












Notes

[illegible]



Marketing British Columbia to the World®



www.landquest.com



Chase Westersund

Personal Real Estate Corporation

Representative

chase@landquest.com

(778) 927-6634



Cole Westersund

Personal Real Estate Corporation

Representative

cole@landquest.com

(604) 360-0793



WESTERN LAND GROUP

LandQuest® Realty Corporation
101 - 313 Sixth Street
New Westminster, BC V3L 3A7

Phone: (604) 664-7630 Fax: (604) 516-6504
Toll Free: 1-866-558-5263 (LAND)

Our property descriptions and geographical information are taken from the BC Assessment Authority, Land Titles Office, government maps and other sources. While LandQuest® does not guarantee the information, we believe it to be accurate, but should not be relied upon without verification. This communication is not intended to cause or induce breach of an existing agency agreement. This property is listed on the MLS®. The trademarks MLS®, Multiple Listing Service® and the associated logos are owned by The Canadian Real Estate Association (CREA) and identify the quality of services provided by real estate professionals who are members of CREA.