



Homestead on Large Acreage
Upper Fraser Road, Longworth



www.landquest.com

Fawn Gunderson
Personal Real Estate Corporation
fawn@landquest.com
(250) 982-2314



Your Land. Your Legacy. Our Expertise.



“The Source” for Oceanfront, Lakefront,
Islands, Ranches, Resorts & Land
in British Columbia

www.landquest.com

Peaceful Homestead on Large Acreage

Upper Fraser Road, Longworth

PROPERTY DETAILS

Listing Number:	26090
Price:	\$499,000
Taxes (2025):	\$547.04
Size:	168 acres
Zoning:	Ru3

DESCRIPTION

Tucked away in a private and pristine setting approximately 1.5 hours east of Prince George, this remarkable 168-acre property offers the ultimate opportunity to live off the land. Surrounded by Crown land on three sides, the setting is incredibly peaceful and rich with wildlife, making it ideal for those seeking privacy, self-sufficiency, and a true connection to nature.

The land is both beautiful and productive, featuring three creeks that provide a reliable, year-round water source, along with a pond and fertile ground for growing. Three large fenced garden areas are already established, along with an impressive orchard of over 25 fruit trees including apple, cherry, plum, pear, saskatoon, and sea buckthorn. Extensive berry patches—blackberries, strawberries, raspberries, haskaps, red and black currants, gooseberries, and rhubarb—create an abundant and sustainable food source, while wild blueberries and high bush cranberries thrive naturally throughout the property.

The property includes a cozy 22' x 26' furnished cabin offering a simple, off-grid lifestyle. Inside

you'll find two bedrooms, a functional kitchen and living area, and a classic wood cookstove for both heat and cooking. With no running water and an outhouse for bathroom facilities, this is an authentic back-to-basics homestead experience, ready for those looking to embrace a more self-reliant way of living.

A variety of outbuildings support the property's functionality, including a 2-bay garage, a well-stocked woodshed with ample firewood, a chicken coop, and a storage/cold room. Multiple building sites throughout the acreage provide excellent options for constructing a larger home or expanding your vision over time.

This property is well-equipped and being sold with a wide range of tools and equipment, including a wood splitter, Yamaha 4-wheeler, ride-on mower, rototiller, tractor with post hole auger, hunting tree stand, and a substantial amount of building materials such as roofing tin and fencing supplies.

With excellent hunting, abundant wildlife, and endless space to explore, this is a rare opportunity to secure a fully set-up homestead in a truly spectacular natural setting. Whether you're looking to establish a hobby farm, live sustainably, or simply enjoy the peace and beauty of the wilderness, this property offers everything you need to get started.

LOCATION

40095 Upper Fraser Road - Longworth. Between Prince George and McBride off of Highway 16.

DIRECTIONS

Contact listing agent for directions.

AREA DATA

Longworth

This area is comprised of scattered homes and properties between Sinclair Mills and Penny on the northeast side of the Fraser River in central BC. The area contains approximately 20 permanent residents, a community hall and former school, now post office. Longworth was an original train station in 1914 on the Grand Trunk Pacific Railway.

Prince George: The Hub of Northern British Columbia

Situated at the confluence of the Fraser and Nechako Rivers, Prince George is the largest city in northern British Columbia, often referred to as the “Northern Capital.” Founded in the early 20th century as a fur trading post, the city has grown significantly, driven primarily by the boom in the forestry industry. The city’s history is closely tied to the railroad, as the Grand Trunk Pacific Railway played an integral role in its establishment. Today, visitors can delve into the rich past of the city at the Exploration Place Museum and Science Centre or by strolling through the heritage sites scattered throughout the city.

Over the years, Prince George has diversified its economy beyond forestry. While the lumber and pulp sectors remain strong pillars, there’s been a notable shift towards sectors like mining, education, and healthcare. The University of Northern British Columbia (UNBC), located in Prince George, has been a significant catalyst for growth, drawing students from all over Canada and fostering an environment of innovation and research. The city is also a vital transportation hub, given its strategic location connecting the Pacific coast to the rest of Canada, making it a focal point for commerce and trade.

For nature enthusiasts, Prince George is a haven. Surrounded by vast forests, lakes, and rivers, the city offers a plethora of recreational activities,

allowing residents and tourists alike to immerse themselves in the great outdoors. Popular activities include hiking, fishing, skiing, and snowboarding in the winter. The city’s park system, notably Forests for the World and Connaught Hill Park, provides easy access to nature trails and panoramic views of the city and the surrounding landscape.

Prince George seamlessly blends the amenities of a modern urban center with the charm of a close-knit community. The city’s rich history, diverse industry, and abundant recreational opportunities make it a unique destination, offering both cultural depth and nature’s bounty. Whether you’re drawn by its economic potential or the allure of its natural surroundings, Prince George stands as a testament to the vibrant spirit of Northern British Columbia.

McBride

McBride is 210 km southeast of Prince George and 166 km west of Jasper. McBride has a population of just over 600 people and is surrounded by the Rocky Mountains and the Cariboo Mountain Range. The village offers all of the services that you need, all within walking distance and is a short 35-minute drive from the property.

The Robson Valley Region is a collection of communities nestled on the edge of the Rocky Mountains in northern British Columbia, between Prince George, Jasper, and Kamloops. The Robson Valley Region includes: Dome Creek, Loos, Crescent Spur, McBride, Dunster, Tête Jaune Cache, and Valemout. These communities and lifestyle offer a great opportunity to step back and enjoy life—the outdoors, nature, fresh air, wildlife, and close neighbours.

Living in the Robson Valley is your chance to step away from the busy pace of city life, and embrace space, serenity, scenic views, community, outdoor adventures, and a life that anyone can afford.

VEGETATION

The fertile ground, excellent sun exposure, and abundant fresh water contribute to its productivity offering over 25 assorted fruit trees, including apple, cherry, plum, pear, Saskatoon, sea buckthorn, and more.

There is plenty of blackberries, strawberries, raspberries, haskaps, red and black currants, gooseberries and rhubarb.

The area is also abundant with wild blueberries and high bush cranberries.

Other than the creeks and 3 large cleared garden/homestead areas, the remainder of this property is treed.

RECREATION

The Longworth, Prince George, McBride area, nestled in the scenic heart of British Columbia, offers a diverse range of outdoor recreational activities. Outdoor enthusiasts can explore the vast wilderness through hiking, mountain biking, and wildlife watching in the lush forests and mountainous terrains. Winter transforms the landscape into a haven for snowmobiling, cross-country skiing, and snowshoeing. Local parks and campgrounds cater to families and nature lovers, and the region's rich cultural heritage can be appreciated through visits to historic sites and community events. This area is a paradise for those seeking adventure, tranquility, and a deep connection with nature.

This property is situated in 7-17 which will give you the opportunity to hunt a variety of different species such as:

- Elk
- Mule deer
- White-tailed deer
- Moose
- Mountain goat
- Black bear

Longworth Peak Trail, located in the picturesque landscape of British Columbia, offers a thrilling and rewarding experience for hikers and outdoor enthusiasts. The trail goes through dense forests, offering glimpses of diverse wildlife and vibrant flora. As hikers ascend, they encounter a mix of terrain, from gentle slopes to more challenging rocky paths, all the while being surrounded by stunning panoramic views of the surrounding mountains and valleys. At the peak, adventurers are rewarded with breathtaking vistas of the Fraser River and the vast, wilderness.

MAP REFERENCE

53°55'31.25"N and 121°29'22.33"W

SERVICES

- Power: BC Hydro
- Satellite Internet
- Wood heat

This property does not have a well or running water to the house.











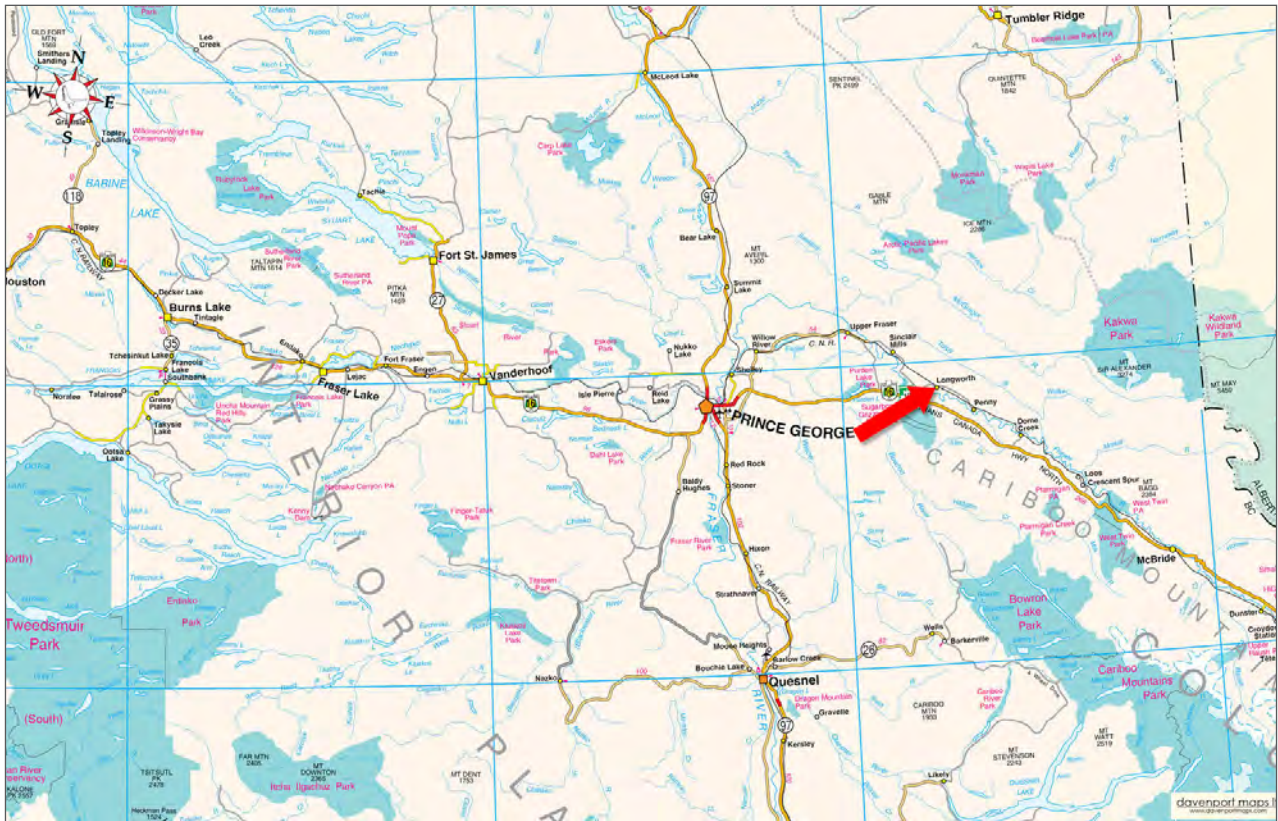
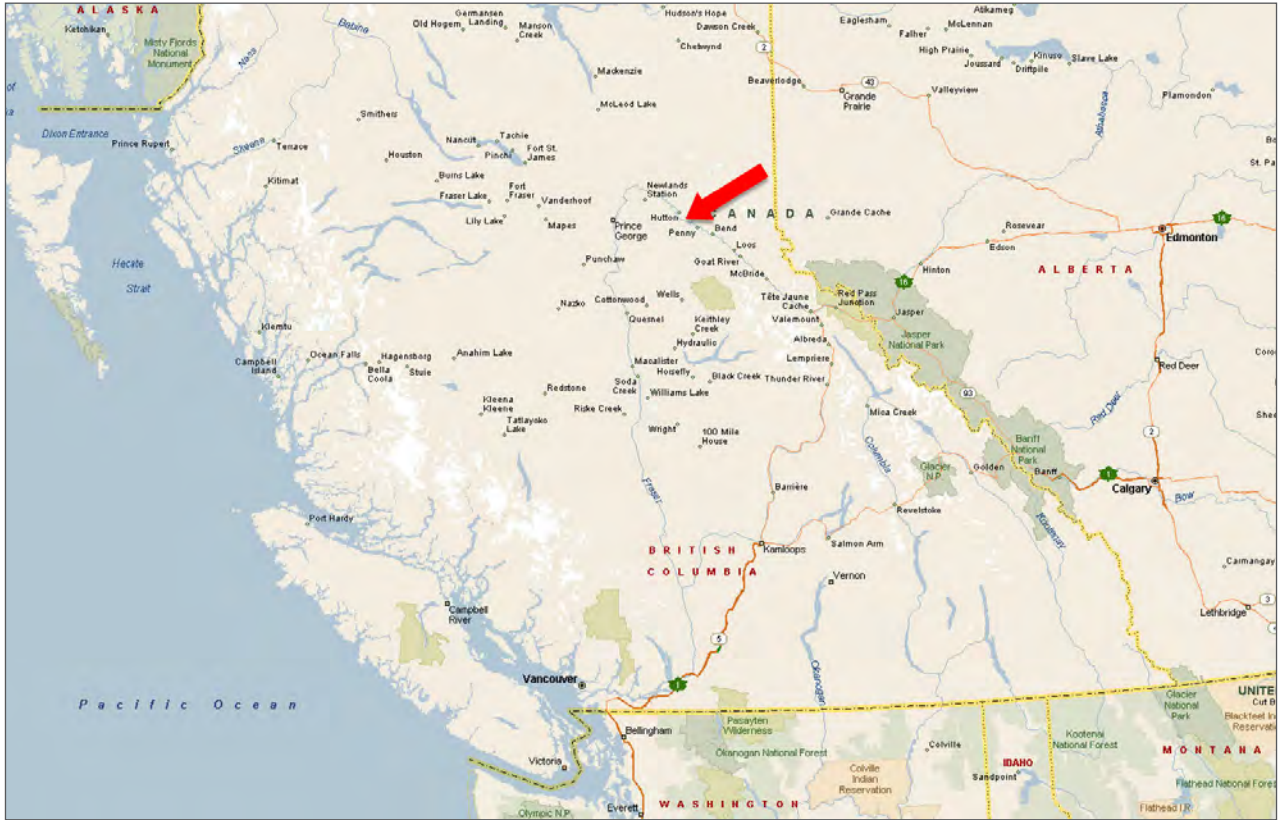


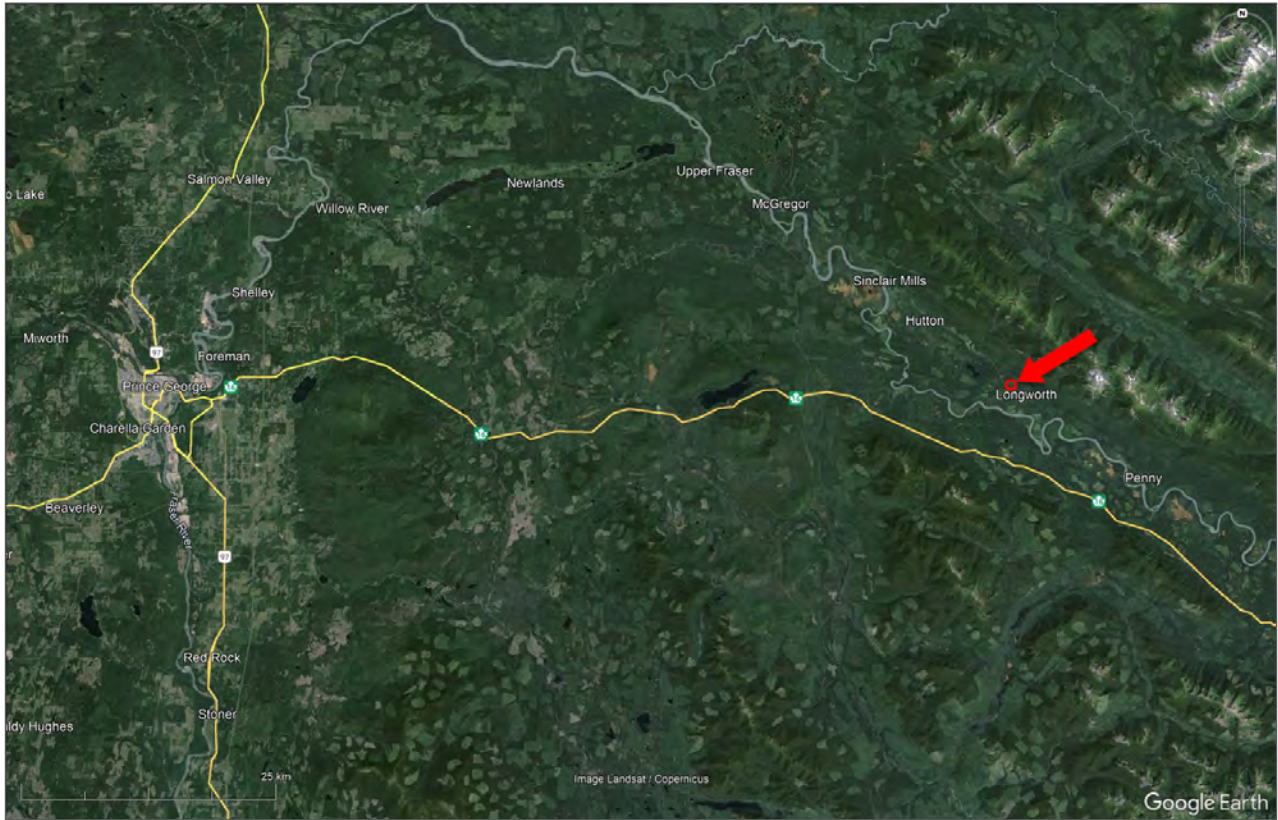


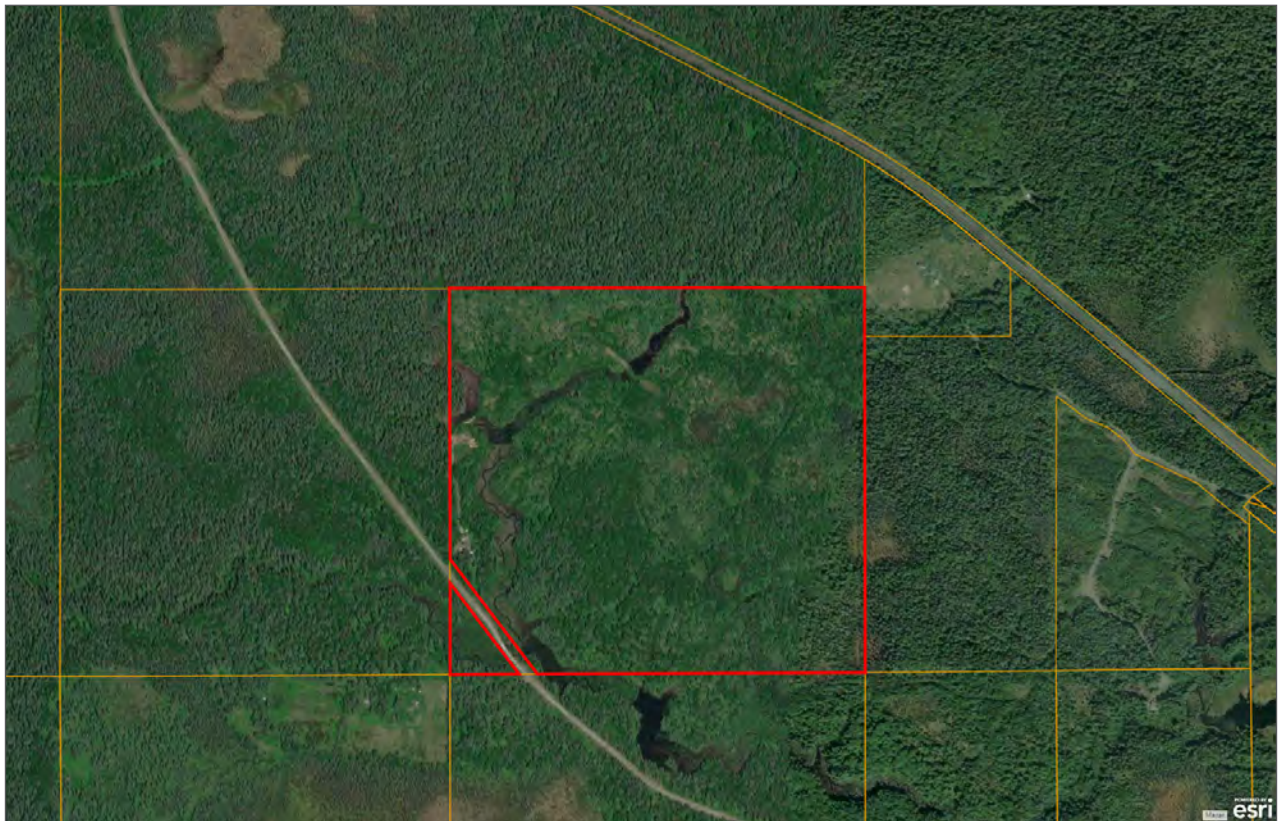


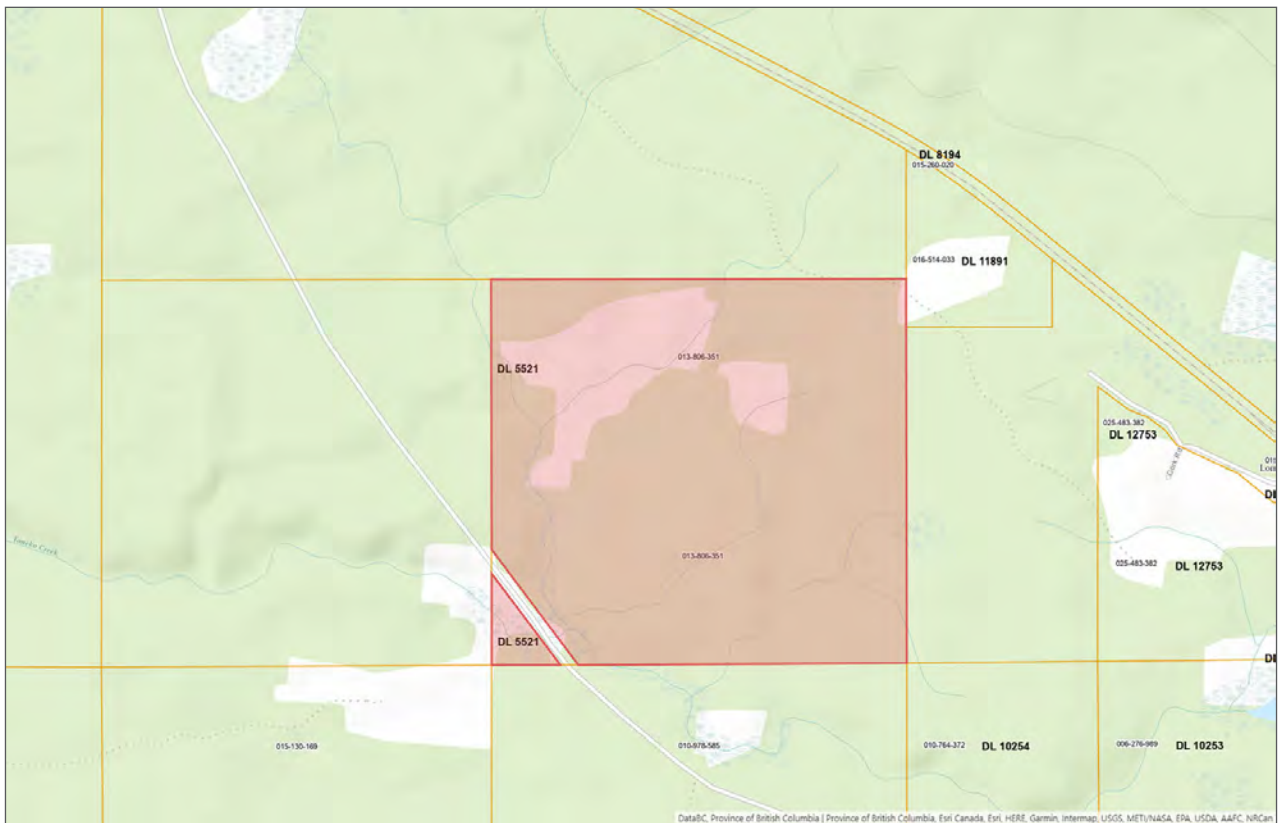
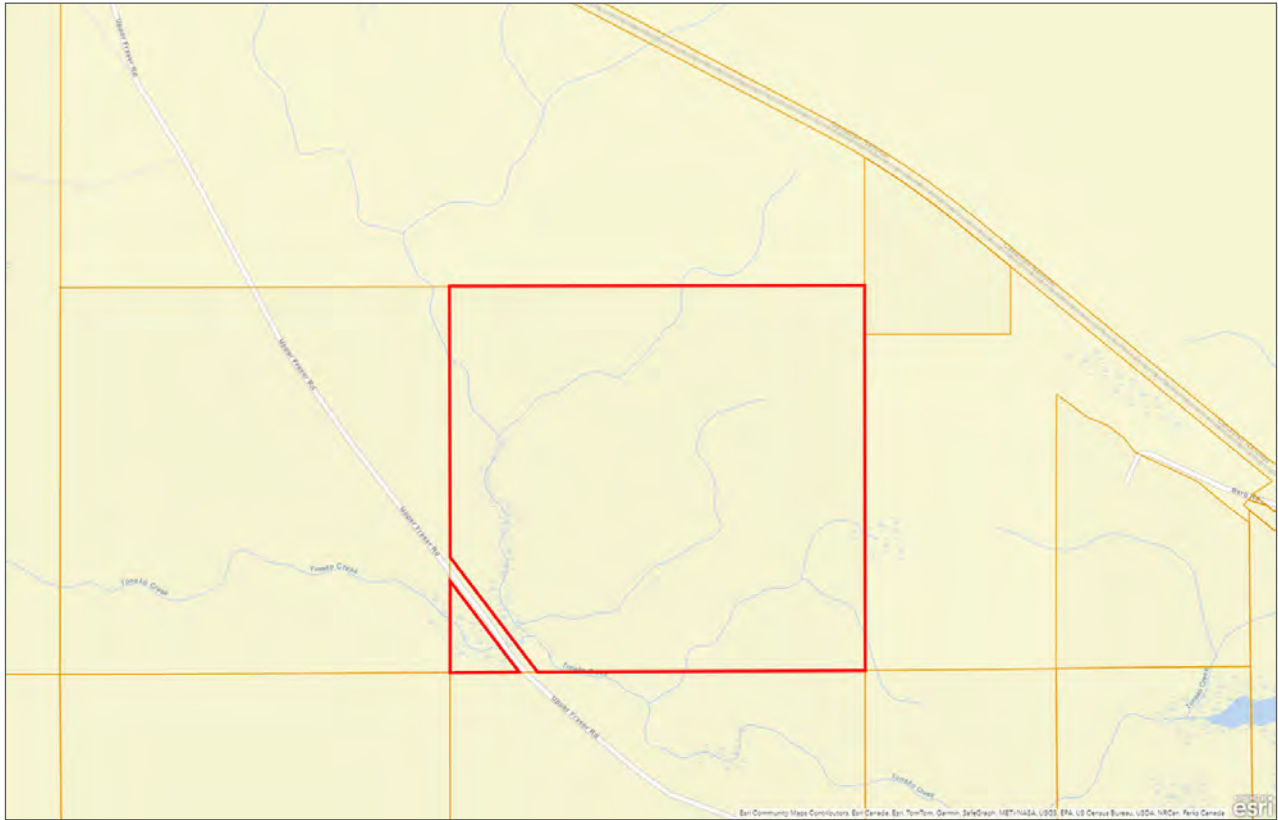














Your Land. Your Legacy. Our Expertise.



www.landquest.com



Fawn Gunderson

Personal Real Estate Corporation

Representative

fawn@landquest.com

(250) 982-2314

LandQuest® Realty Corporation
101 - 313 Sixth Street
New Westminster, BC V3L 3A7

Phone: (604) 664-7630 Fax: (604) 516-6504

Toll Free: 1-866-558-5263 (LAND)