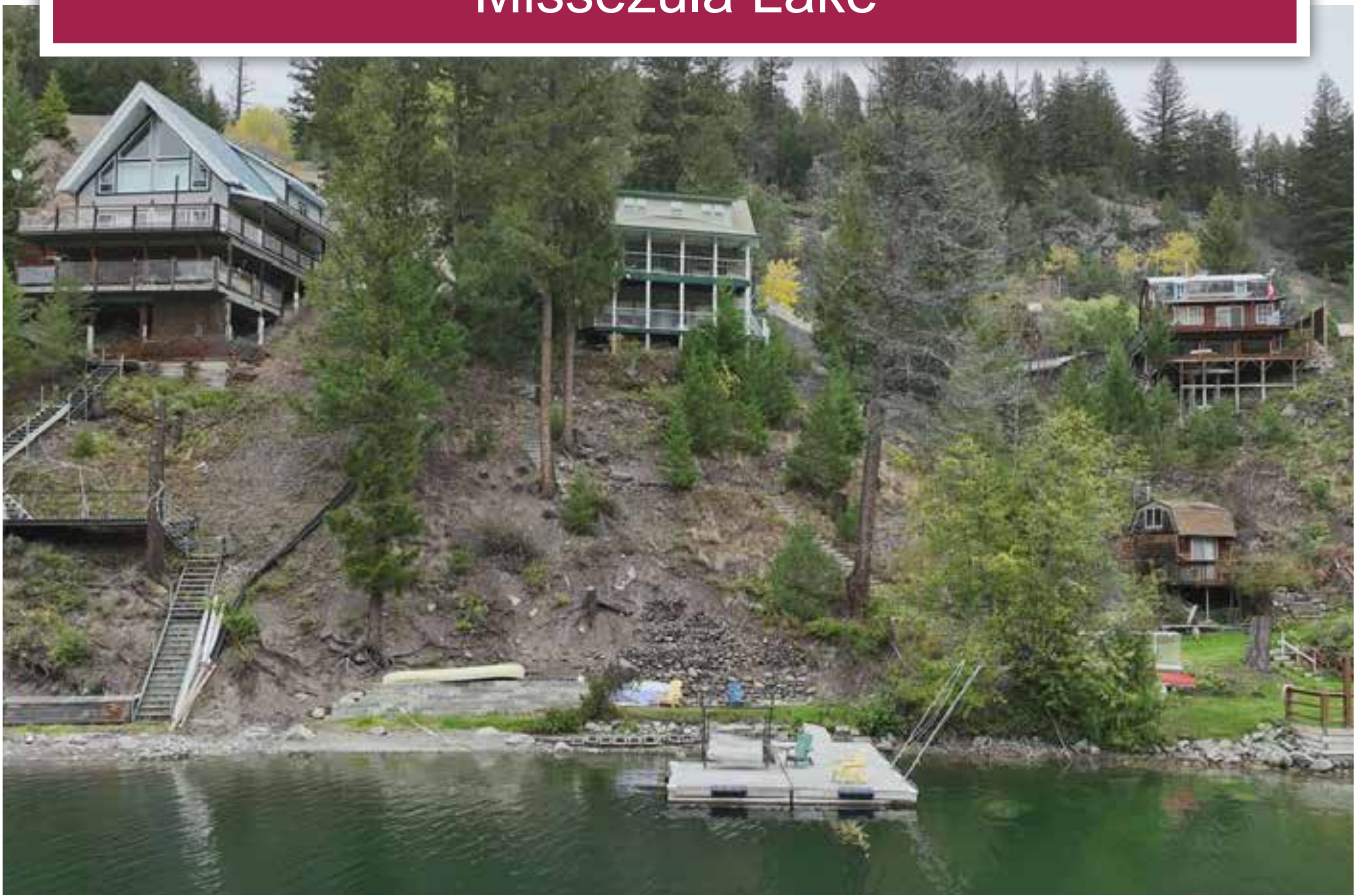




Panoramic Lakefront Retreat Missezula Lake



Valerie Kynoch
Personal Real Estate Corporation
val@landquest.com
(250) 280-0994

Cole Westersund
Personal Real Estate Corporation
cole@landquest.com
(604) 360-0793



Chase Westersund
Personal Real Estate Corporation
chase@landquest.com
(778) 927-6634



Your Land. Your Legacy. Our Expertise.



“The Source” for Oceanfront, Lakefront,
Islands, Ranches, Resorts & Land
in British Columbia

www.landquest.com

Panoramic Lakefront Retreat

Missezula Lake

PROPERTY DETAILS

Listing Number:	25267
Price:	\$799,000
Taxes (2025):	\$2,395.38
Size:	0.47 of an acre
Zoning:	RS1

DESCRIPTION

This rare lakefront cabin on Missezula Lake offers an inviting blend of comfort and adventure, making it the perfect year-round retreat just an hour from Princeton. The 1,260 sq. ft., 3-level home captures stunning panoramic views with large windows, sun-filled living spaces, and two expansive decks overlooking the water. Inside, you'll find thoughtful details throughout—from hardwood floors and wood stove warmth to a sauna and recreation room on the lower level that opens directly to the shoreline. With private stairs leading to your own dock and beach area, you'll have immediate access to the lake for fishing rainbow trout, kokanee, and lake trout, or simply relaxing by the water's edge.

Beyond the cabin, the Missezula Lake area is known as a four-season playground. In summer, enjoy swimming, boating, kayaking, and endless watersports, while fall brings hunting and hiking through scenic forests filled with wildlife. Winter transforms the region into a snowmobiling and ice-fishing haven, and spring is ideal for ATVing and exploring nearby trails. Princeton is close enough for supplies and dining, yet the community

at Missezula Lake offers a peaceful and private lifestyle with well-maintained roads and a reliable water system. Whether you're seeking an active getaway or a quiet place to recharge, this property delivers the full Okanagan-Similkameen recreational lifestyle.

LOCATION

4014 Summers Creek Road - Princeton, BC

DIRECTIONS

Contact the listing agent.

AREA DATA

The Missezula Lake area is a true recreational haven, tucked into a scenic valley surrounded by forested ridges, open meadows, and winding creek systems. The lake itself is the centrepiece, well known for its excellent fishing where anglers regularly catch rainbow trout, kokanee, and lake trout. In the summer, the calm waters are perfect for boating, swimming, kayaking, and water skiing, while the sandy and rocky shoreline creates natural gathering spots for families. The community around the lake is small and friendly, with many cabins and seasonal homes, creating a welcoming atmosphere while still feeling private and peaceful.

Beyond the water, the land offers countless ways to explore and enjoy the outdoors. Trails and old logging roads weave through the surrounding hills, making the area a hotspot for ATVing, mountain biking, and hiking in the warmer months. In the fall, hunters take advantage of the healthy populations of deer, moose, and upland birds in the



surrounding forests. Winter transforms Missezula into a snow-filled playground, with snowmobiling, snowshoeing, and ice fishing all popular pastimes. The four-season nature of the area ensures there is always something to do, while its natural beauty and relatively easy access make it one of the most desirable lakefront destinations in the southern interior of British Columbia.

MAP REFERENCE

49°46'19.61"N and 120°30'0.71"W

SERVICES

- Hydro
- Water
- Sepsic

LEGAL

LOT 3 DISTRICT LOT 4522 KAMLOOPS DIVISION
YALE DISTRICT PLAN 22203

PID 007-033-907













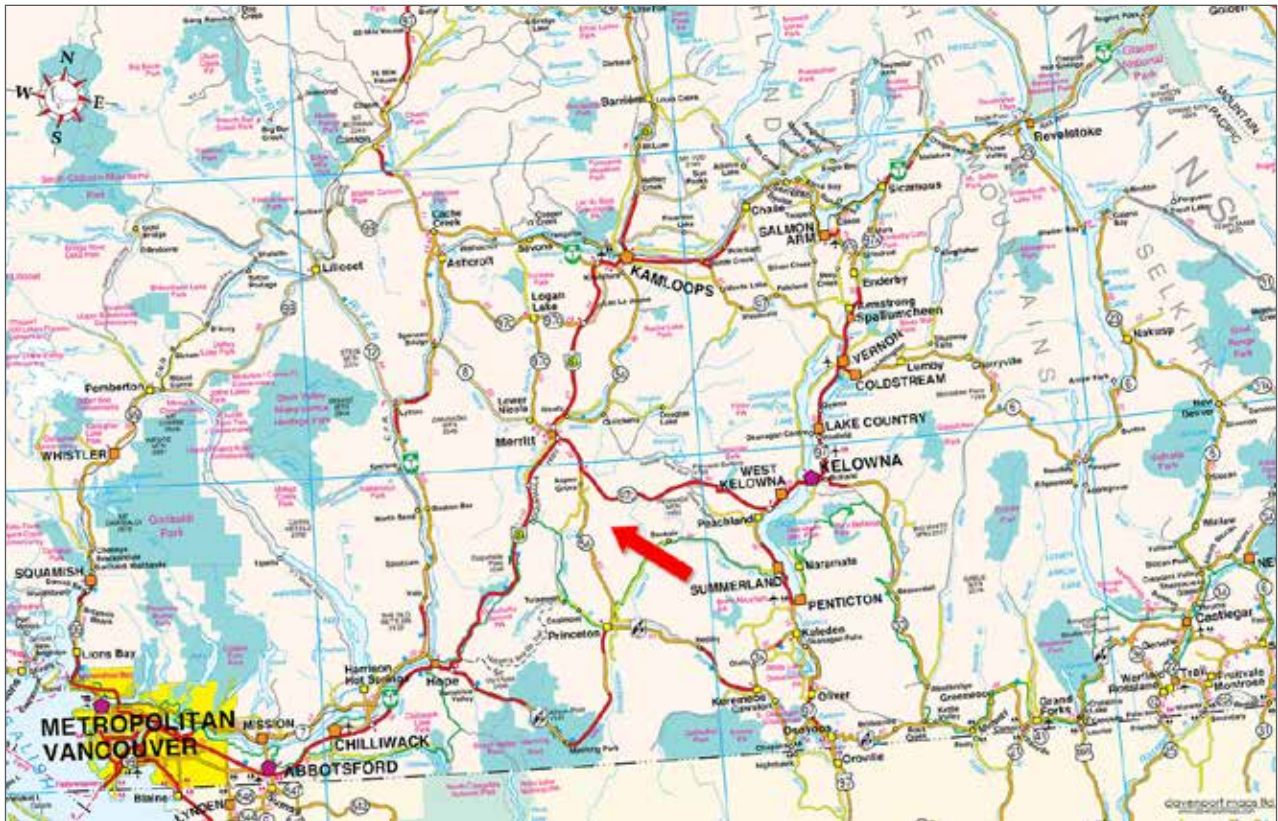


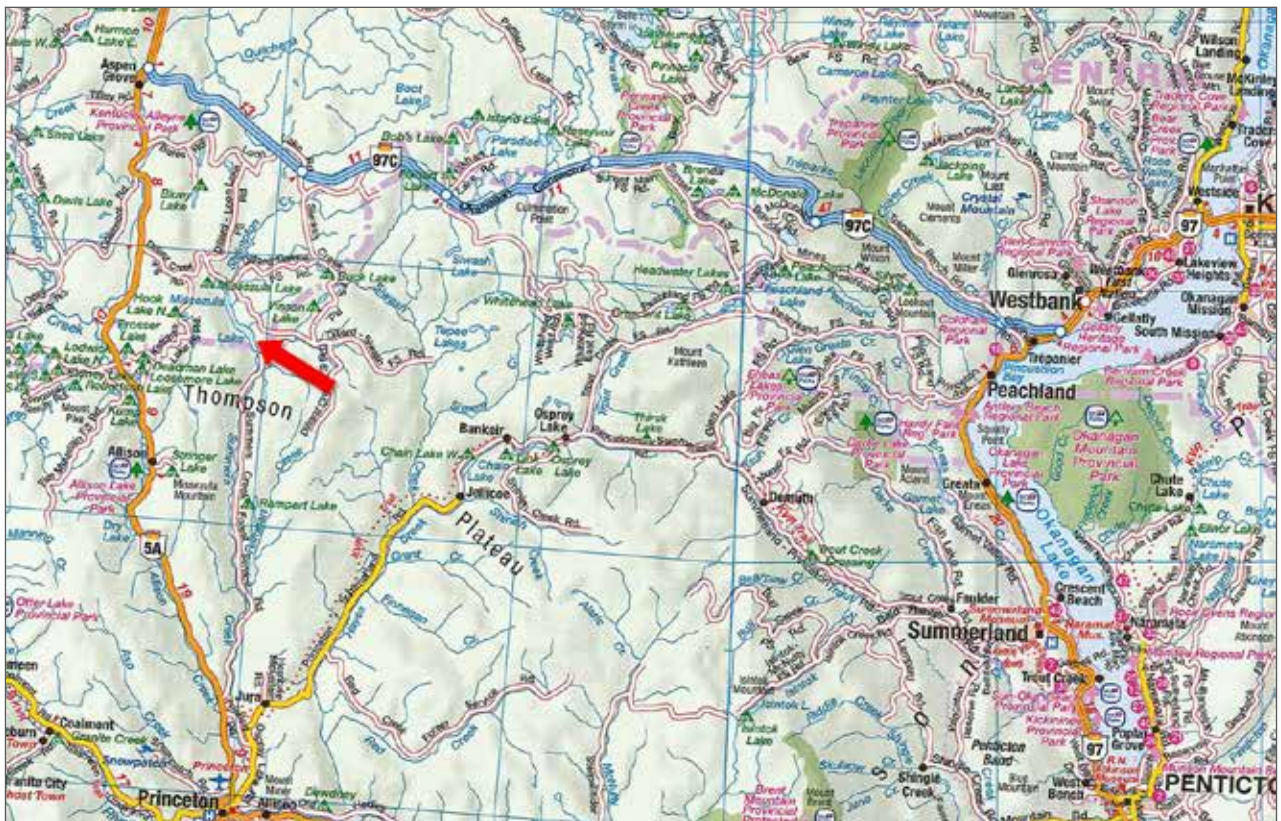




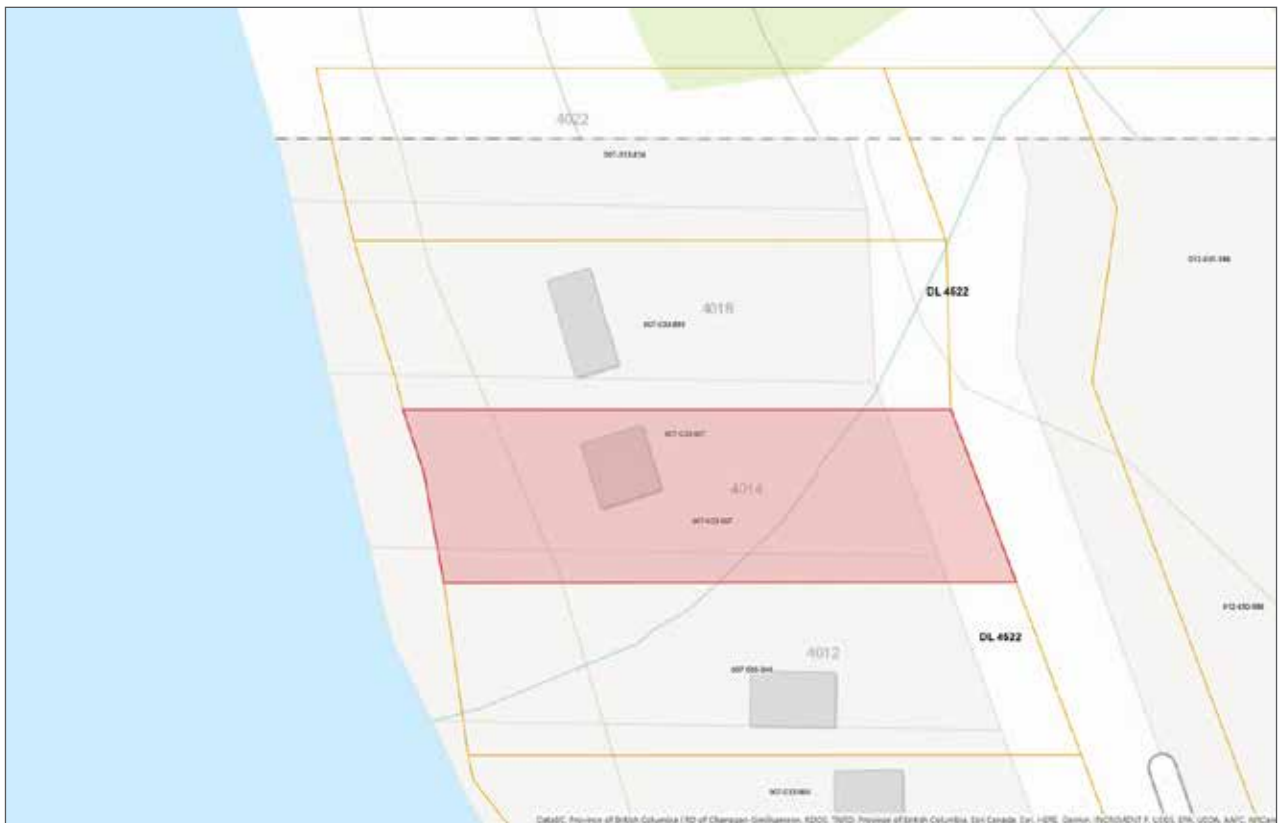
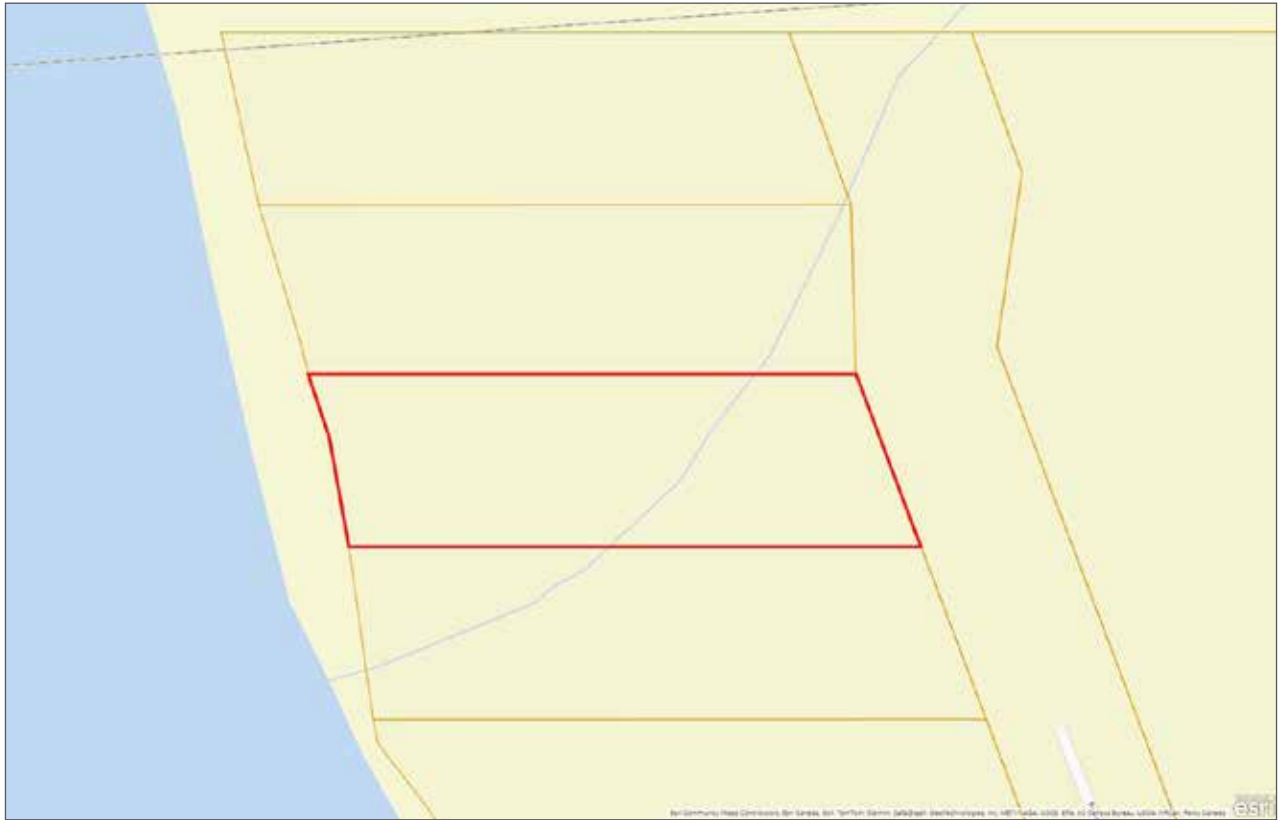














Your Land. Your Legacy. Our Expertise.



www.landquest.com



Valerie Kynoch

Personal Real Estate Corporation
Representative
val@landquest.com
(250) 280-0994



Cole Westersund

Personal Real Estate Corporation
Representative
cole@landquest.com
(604) 360-0793

WESTERN LAND GROUP



Chase Westersund

Personal Real Estate Corporation
Representative
chase@landquest.com
(778) 927-6634

WESTERN LAND GROUP

LandQuest® Realty Corporation
101 - 313 Sixth Street
New Westminster, BC V3L 3A7

Phone: (604) 664-7630 Fax: (604) 516-6504
Toll Free: 1-866-558-5263 (LAND)

Our property descriptions and geographical information are taken from the BC Assessment Authority, Land Titles Office, government maps and other sources. While LandQuest® does not guarantee the information, we believe it to be accurate, but should not be relied upon without verification. This communication is not intended to cause or induce breach of an existing agency agreement. This property is listed on the MLS®. The trademarks MLS®, Multiple Listing Service® and the associated logos are owned by The Canadian Real Estate Association (CREA) and identify the quality of services provided by real estate professionals who are members of CREA.