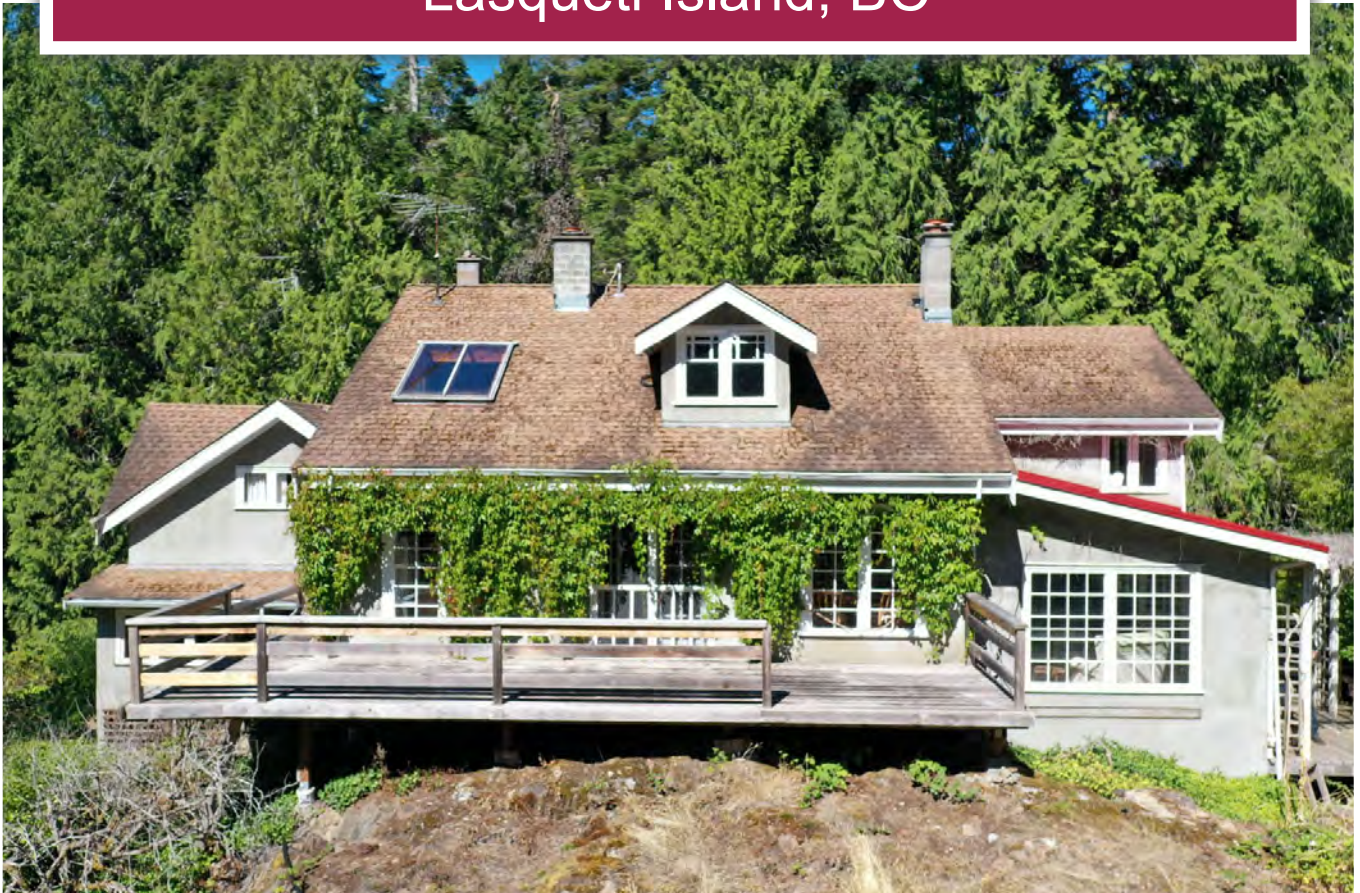




Off-Grid Garden Paradise

Lasqueti Island, BC



www.landquest.com

Kevin Kittmer
kevin@landquest.com
(250) 951-8631



Marketing British Columbia to the World®



“The Source” for Oceanfront, Lakefront,
Islands, Ranches, Resorts & Land
in British Columbia

www.landquest.com

Off-Grid Garden Paradise

Lasqueti Island, BC

PROPERTY DETAILS

Listing Number:	25251
Price:	\$695,000
Taxes (2025):	\$2,992.78
Size:	16.3 acres

DESCRIPTION

Welcome to your private garden paradise on southern Lasqueti Island. This enchanting 16.3-acre off-grid property offers fertile soil, abundant water resources, and a character-filled country home, complete with a workshop and woodshed.

Inside, the oversized kitchen feels like something from a novel, featuring a walk-in pantry, large garden-view windows, a Moffat gas stove, and a super-efficient Bavarian woodstove with porcelain-coated iron tiles. The main living area is bright and inviting with a wood-burning fireplace and plenty of space for entertaining or enjoying quiet moments in nature.

The main floor bath boasts a deep soaker tub, separate shower, and a unique boiler system connected to a wood stove with propane backup for hot water. Upstairs, you'll find spacious bedrooms, a cozy den, and even a secret passageway.

Step outside to a large, covered porch overlooking mature gardens, fruit trees, and an area for a generous vegetable plot, all connected by winding pathways. A stream runs through the property, feeding a large pond that supplies irrigation to the

gardens, with vehicle access around the pond and lower garden. A 215' drilled well (30 gpm) provides an exceptional supply of fresh drinking water—truly rare for Lasqueti Island.

Squitty Bay Provincial Park and beach access are just a short drive away, making this the perfect retreat for those seeking an authentic off-grid lifestyle in a magical setting.

LOCATION

1 Morewater Road - Lasqueti Island, BC

DIRECTIONS

A passenger-only ferry connects the island to the community of French Creek, near Parksville. The ferry makes two to three runs per day, six days per week. Please call the agent for directions and to arrange a tour. All visits must be made by appointment in advance.

AREA DATA

Lasqueti Island is a secluded, off-grid island located within the Strait of Georgia about 50 miles Northwest of Vancouver. The island is accessed by regularly scheduled passenger/light cargo ferry and barge service from French Creek (Parksville/Qualicum Beach area) on Vancouver Island.

Island residents strive to live a self-sufficient lifestyle and produce their own power via micro-hydro, solar, and/or wind mechanisms. Phone and internet services are available. On island, you will also find a school, health centre, post office, community and arts centres, dance and yoga studios, volunteer fire department, ambulance, restaurant/pub/hotel,

gas station, propane service, small café/bakery/grocery, provincial and regional parks, nature reserves, farm and feed supply store.

The island has a reputation for sailing and sea kayaking which is considered among some of the finest in lower British Columbia. The island and surrounding islets have amazing scuba diving and snorkeling locations. Lasqueti enjoys waters warm enough for swimming in the ocean in summertime.

VEGETATION

The island is generally divided between drier and wetter areas. The latter often characterized by red cedar and the former by native cacti, arbutus and succulent plants. Lasqueti Island lies at the heart of the Coastal Douglas-Fir zone (CDF), a provincially listed ecosystem which is less than 1% of BC's land base. Some old growth forest still exists on this island as well giving it a unique flora and fauna coverage.

RECREATION

Fishing, kayaking, and sailing.

HISTORY

Lasqueti Island was named in 1791 by Spanish Naval officer José María Narváez, commander of the Santa Saturnina after Juan Maria Lasqueti, a prominent Spanish naval officer.

MAP REFERENCE

49°27'56.70"N and 124°12'47.51"W

INVESTMENT FEATURES

Hobby farm potential.

SERVICES

- Off-grid
- Drilled well - 30 gpm
- Septic system



IMPROVEMENTS

Main dwelling, shop, and woodshed.

ZONING

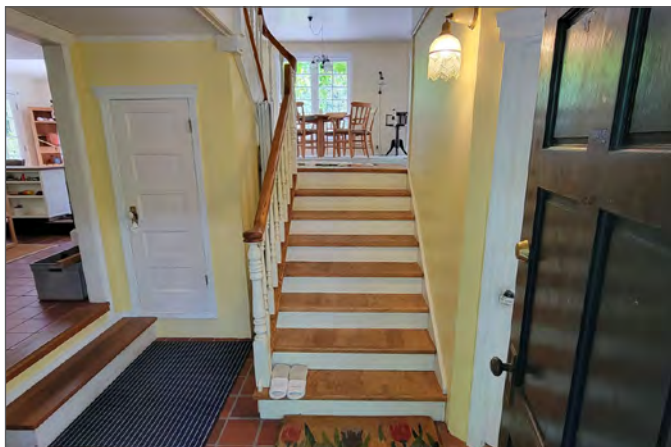
LB - Land Based - Islands Trust

LEGAL

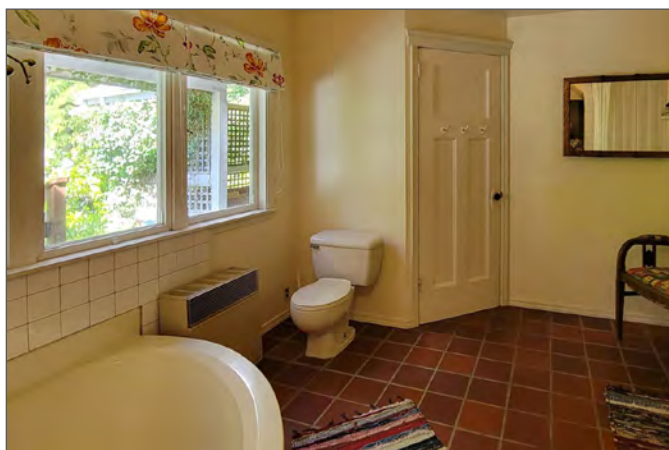
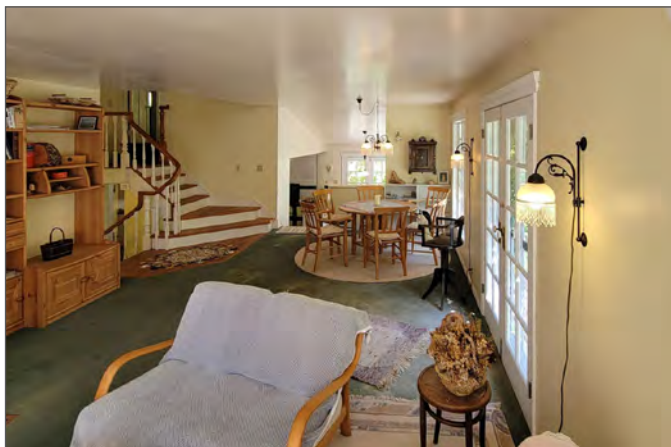
Part E ½ OF NE ¼ Section 9, Nanaimo Land District, Except Plan VIP 36028, Lasqueti Island; & EXC those parts in Plan VIP 39037 & VIP 52978

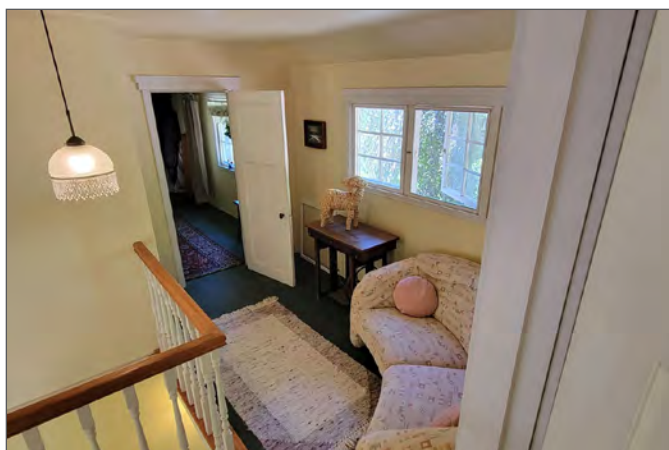
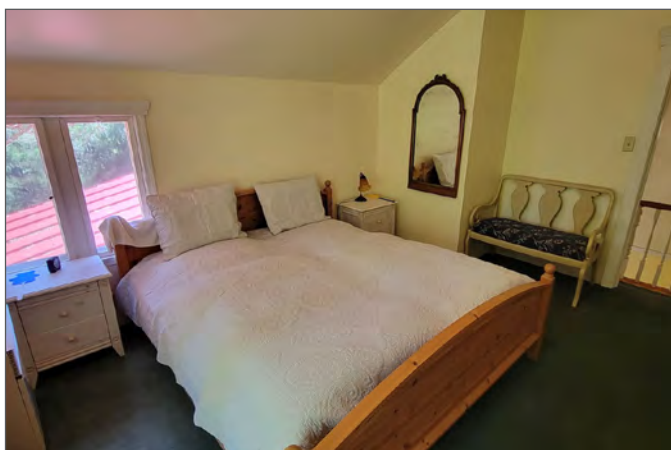
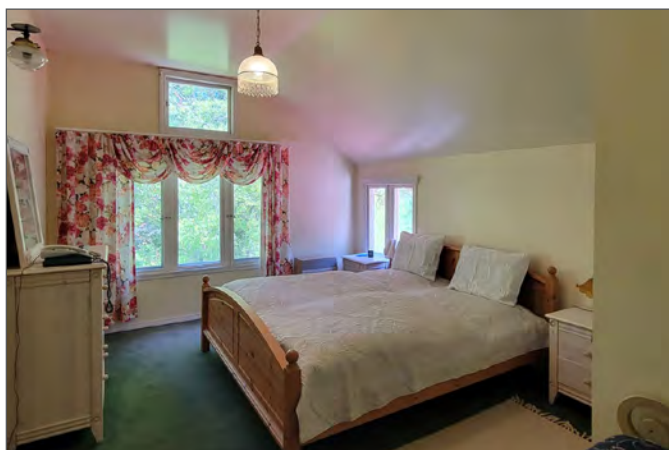
PID 009-719-326

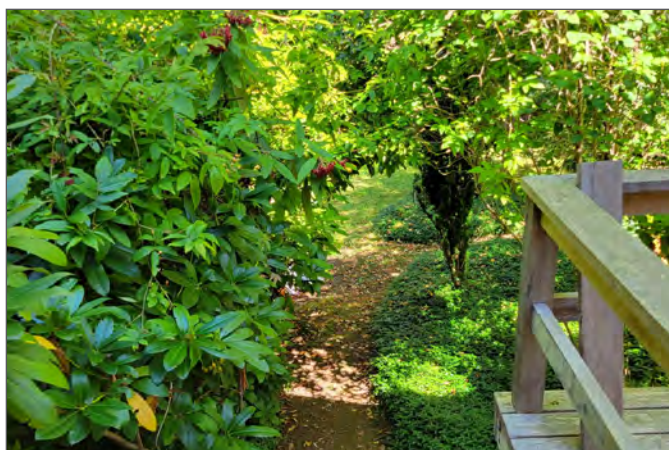
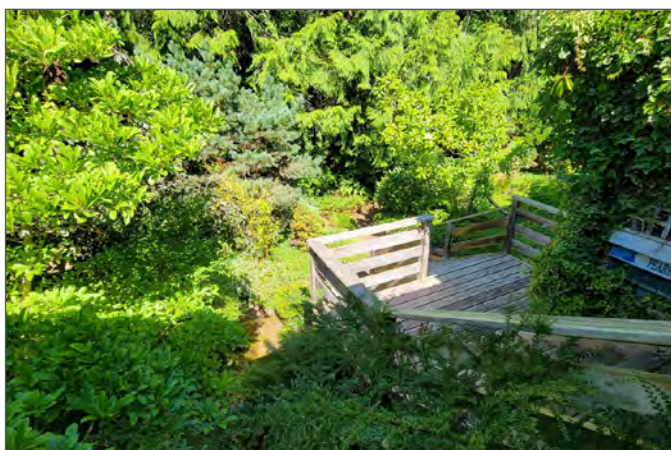






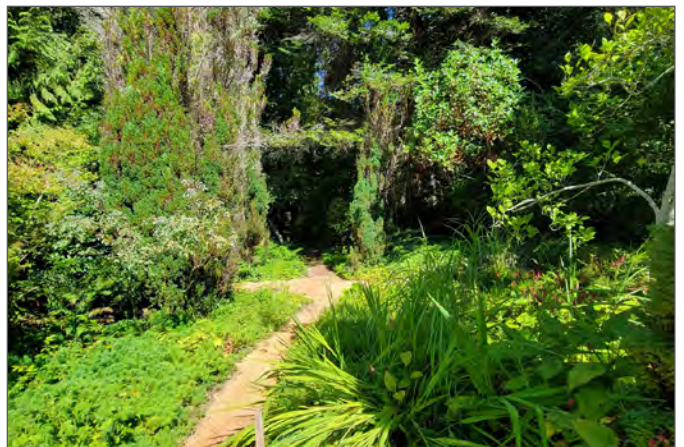
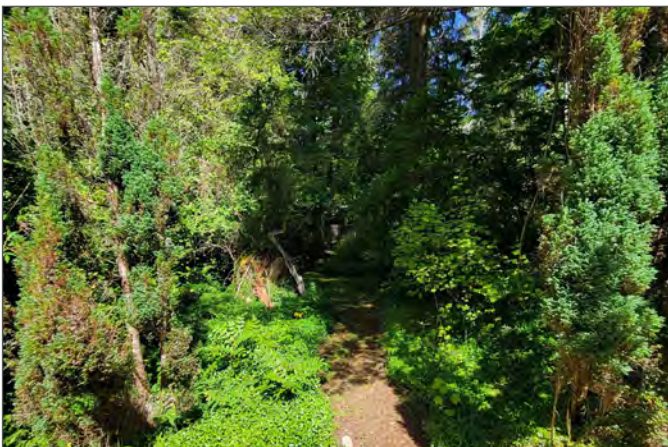


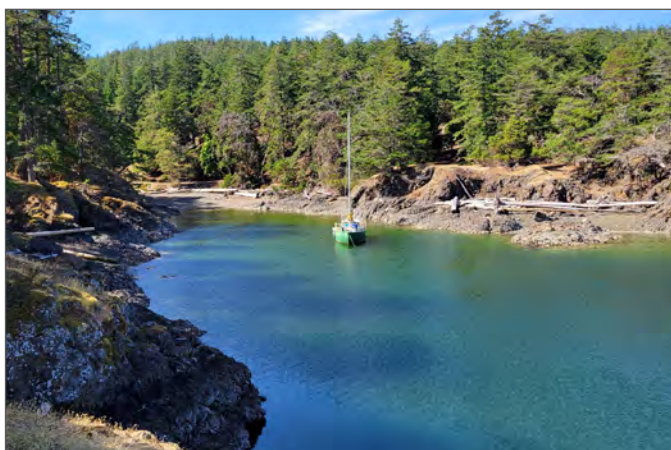
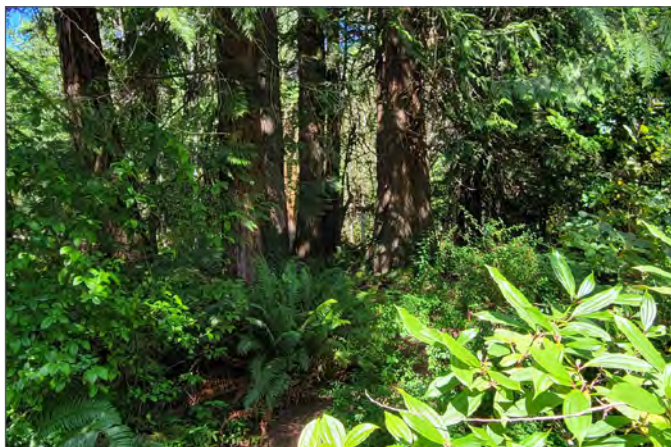




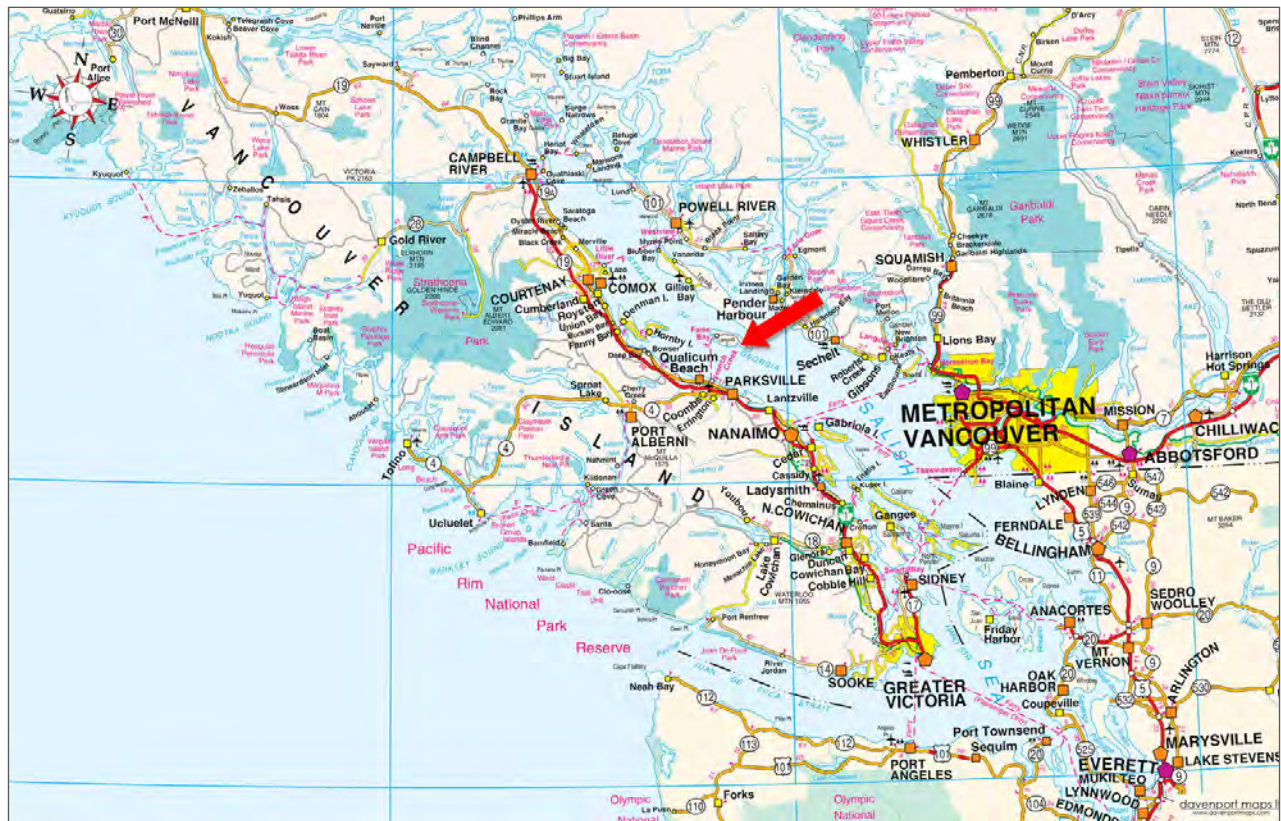
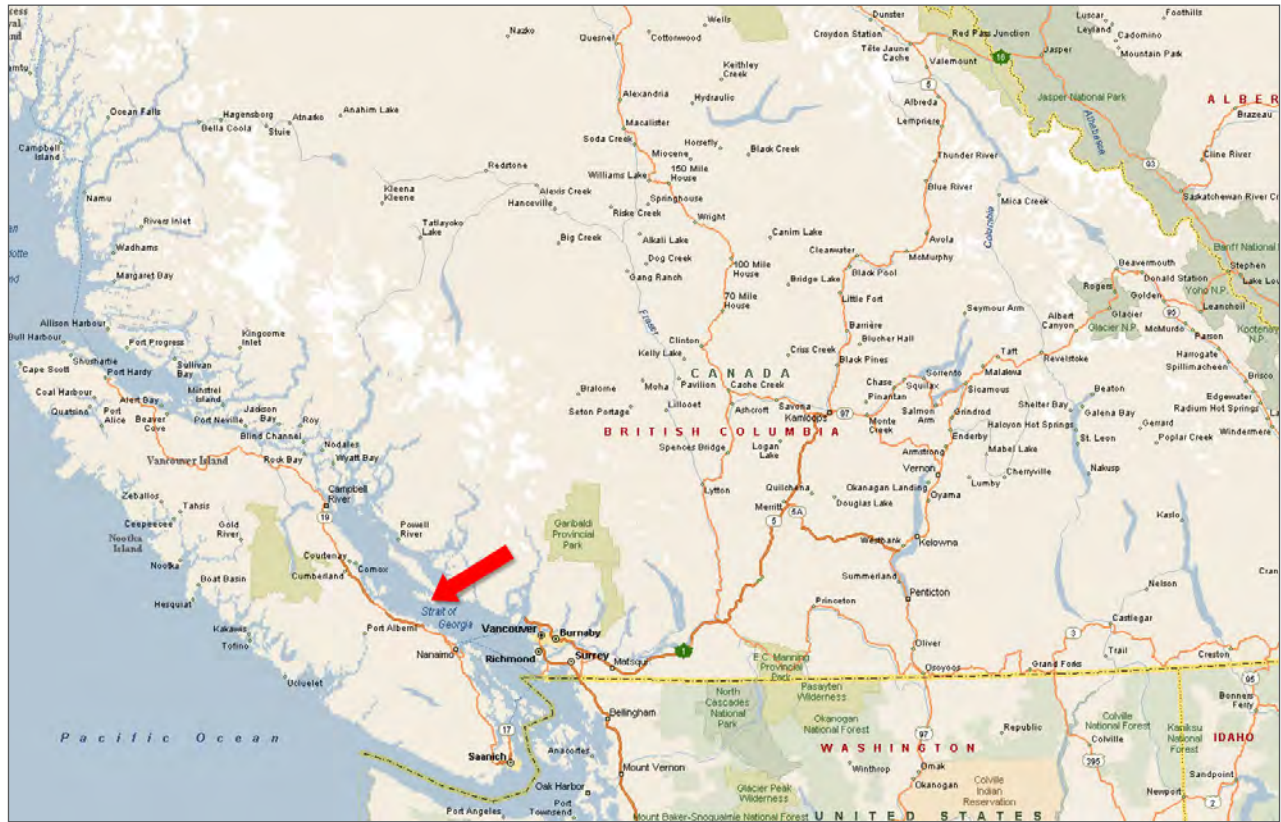


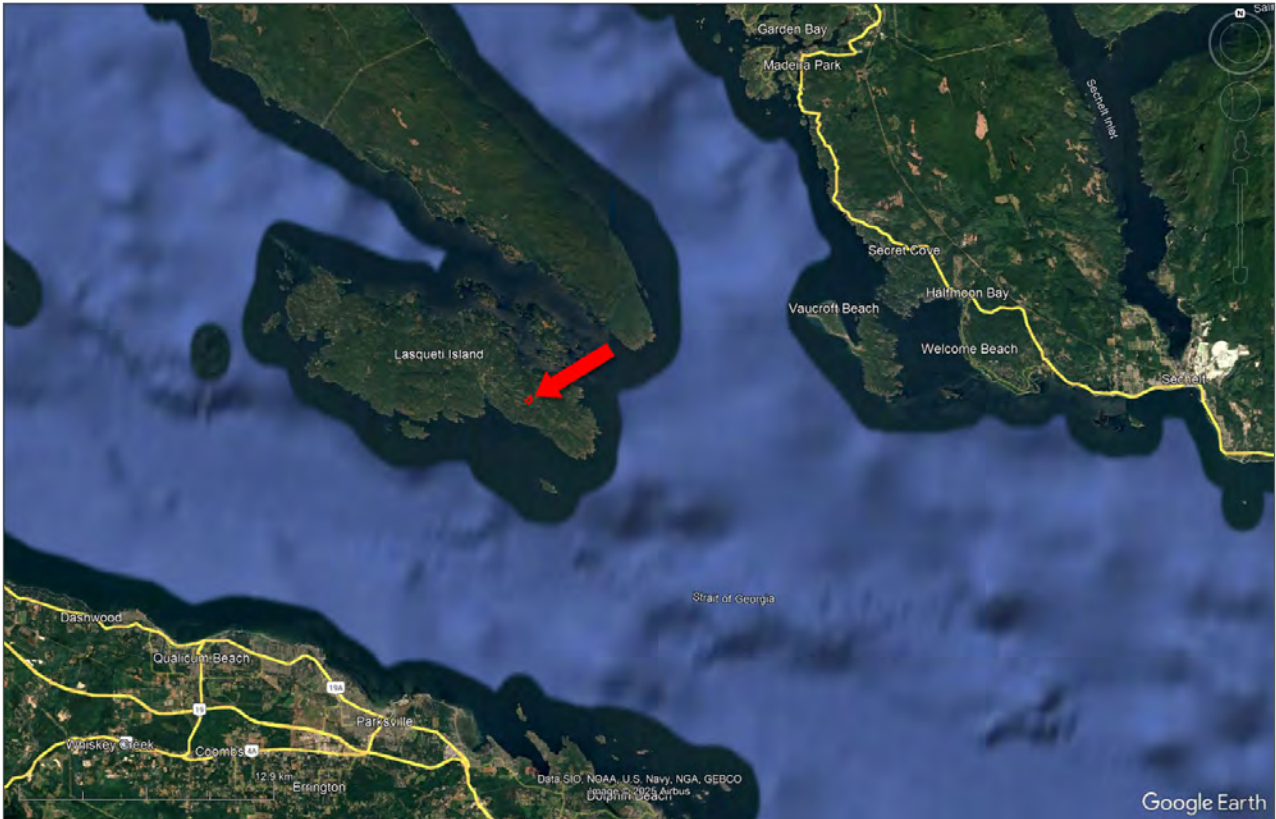


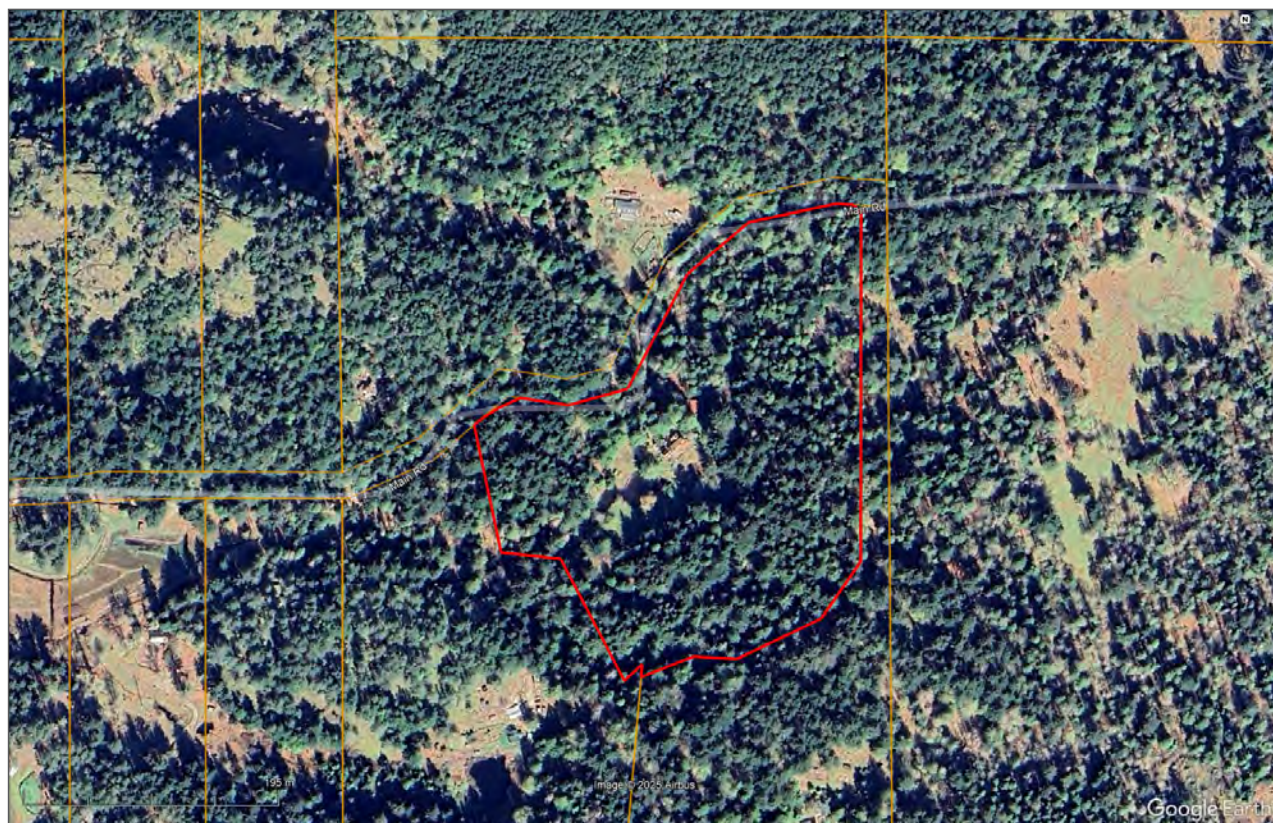
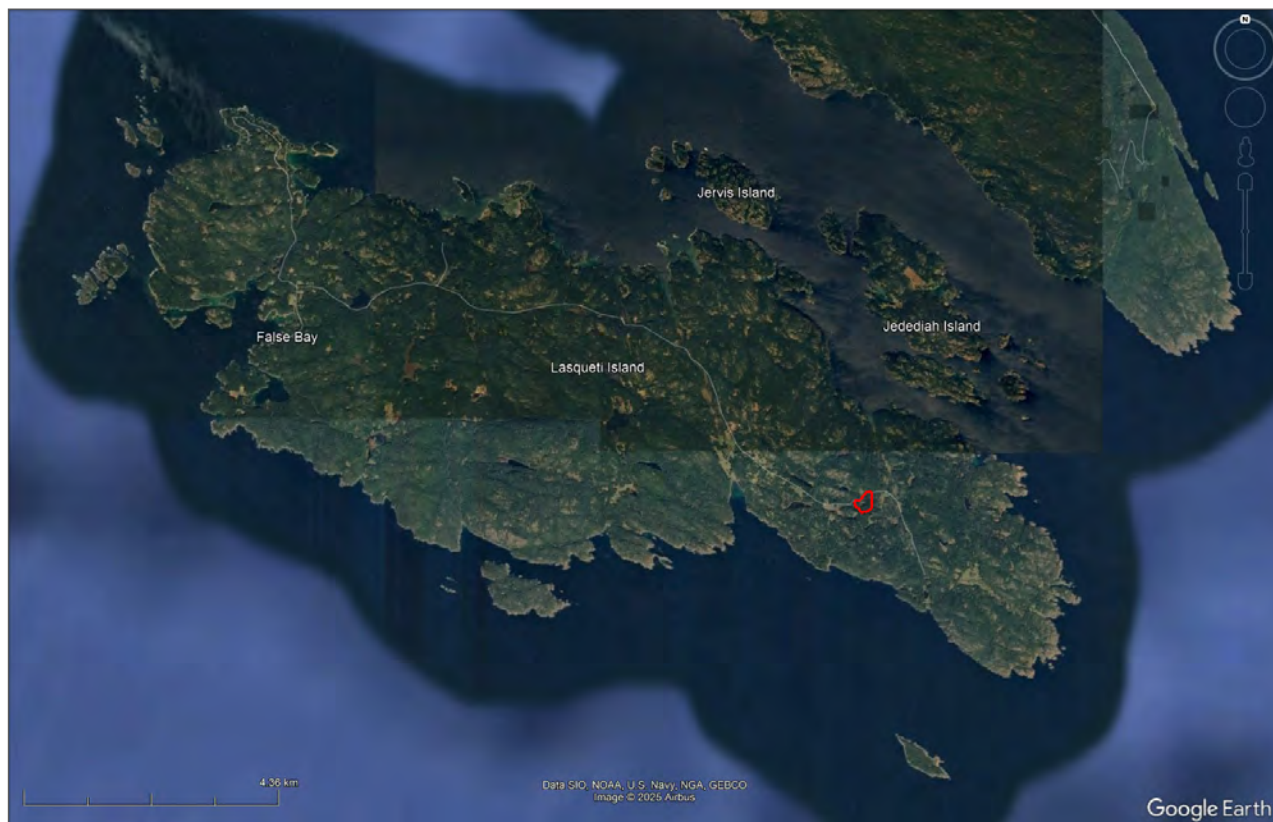


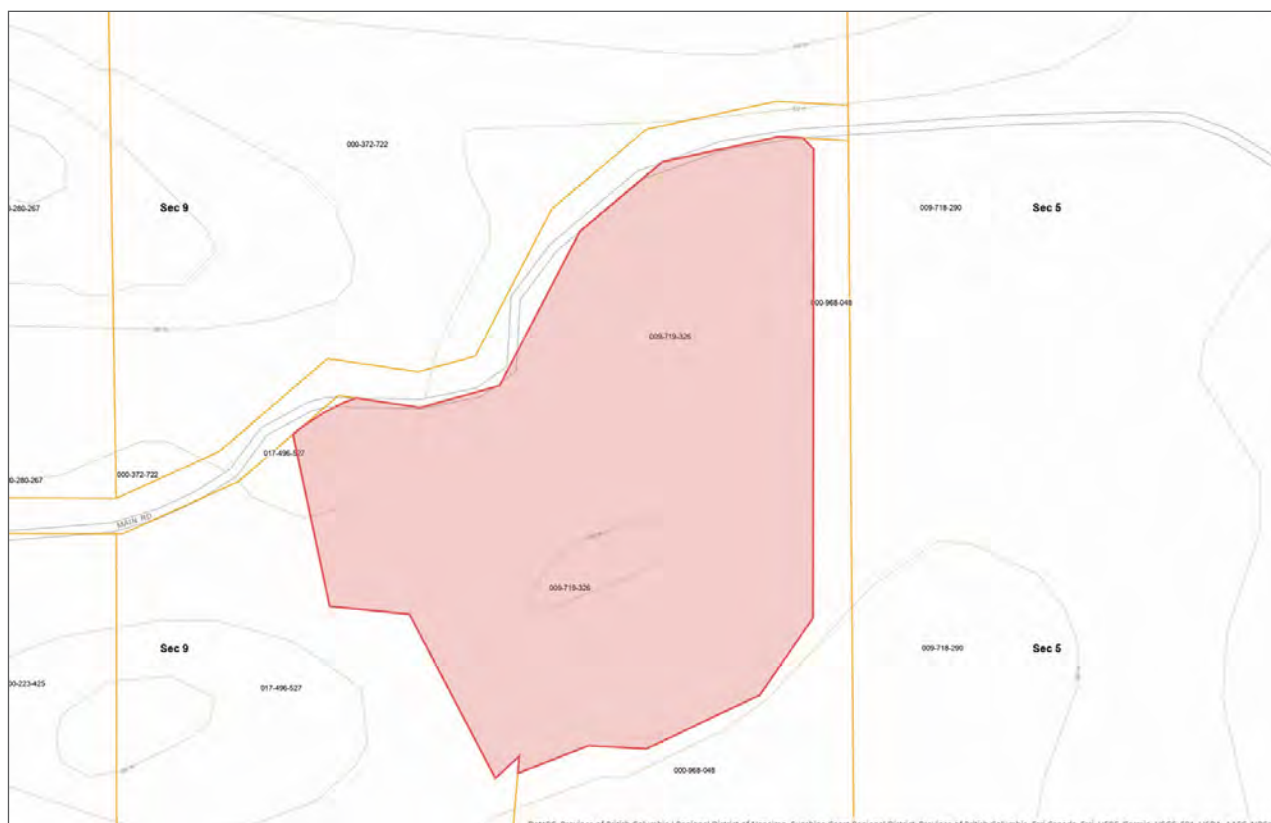


Squitty Bay Provincial Park and beach access are just a short drive away









[illegible]



Marketing British Columbia to the World®



www.landquest.com



Kevin Kittmer

Representative
kevin@landquest.com
(250) 951-8631

LandQuest® Realty Corporation
101 - 313 Sixth Street
New Westminster, BC V3L 3A7

Phone: (604) 664-7630 Fax: (604) 516-6504
Toll Free: 1-866-558-5263 (LAND)