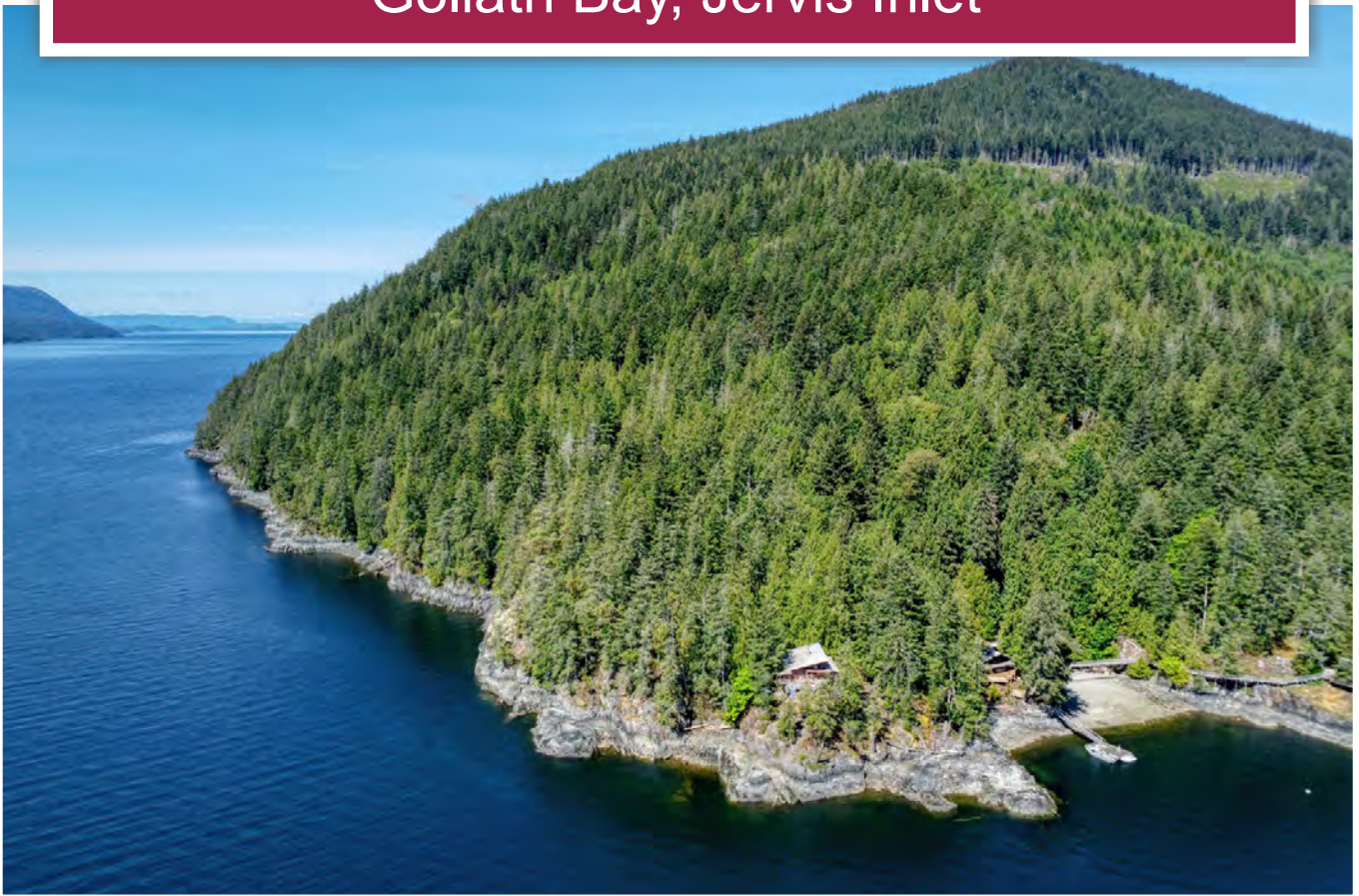




Oceanfront Log Home

Goliath Bay, Jervis Inlet



Jamie Zroback
BC Landpro Group
jamie@landquest.com
1 (604) 483-1605

Jason Zroback
BC Landpro Group
jason@landquest.com
1 (604) 414-5577



Marketing British Columbia to the World®



“The Source” for Oceanfront, Lakefront,
Islands, Ranches, Resorts & Land
in British Columbia

www.landquest.com

Oceanfront Log Home

Goliath Bay, Jervis Inlet

PROPERTY DETAILS

Listing Number: 25172
Price: \$589,000

SIZE

52.19 acres ~ 1,175± ft oceanfront

DESCRIPTION

Fully furnished 1,600 sq. ft. oceanfront log home in scenic Goliath Bay on Jervis Inlet. Just 15 minutes by boat from Egmont, this property offers a classic West Coast off-grid retreat with modern comforts, panoramic views, and a rich marine environment at your doorstep.

Ownership includes a 1/3 share in 52.19 acres with approximately 1,175 feet of oceanfront and 5 acres of designated exclusive use around the cabin. Enjoy secure, convenient access via a shared dock, water system, and beach area. This is a boat- or floatplane-access-only property, ensuring privacy and a true coastal wilderness experience.

The 1.5-storey log home features 3 bedrooms and 1 bathroom. The main level includes an open living area with a wood-burning fireplace, propane appliances, and hot water. Off-grid power is supplied by solar panels with a battery bank, inverter, and backup generator. A large wraparound deck—open at the front and covered on the sides and back—offers commanding views of Jervis Inlet and the surrounding coastal mountain range.

Wildlife is abundant in this remote inlet: watch whales, orcas, Pacific white-sided dolphins, and diverse bird life right from your deck. The area is renowned for excellent fishing, prawning, crabbing, and shellfish harvesting. There's no need to travel far for adventure—your own dock can provide daily harvests of prawns, crabs, oysters, and clams.

Goliath Bay is part of one of BC's most popular outdoor recreation regions, ideal for boating, kayaking, scuba diving, hiking, and exploring endless shoreline. Notably, Jervis Inlet was once described as Jacques Cousteau's favourite BC dive spot, known for its remarkable underwater topography and marine life. Nearby destinations include Hotham Sound and the world-famous Princess Louisa Inlet.

This property is not subject to Canada's foreign buyer ban.

Call today to arrange your private viewing and experience the best of BC's remote coastal living.

LOCATION

In Goliath Bay on Jervis Inlet, approximately 15 minutes by boat northwest of Egmont on British Columbia's Sunshine Coast.

DIRECTIONS

From Vancouver, drive north on Highway 99 to Horseshoe Bay and take the ferry to Langdale. Continue up Highway 101 to Egmont, then travel 15 minutes by boat to Goliath Bay on Jervis Inlet. You can also hire High Tide Tours Water Taxi in Egmont for convenient transport directly to the property.



AREA DATA

Jervis Inlet

Slicing deep into the Coastal Mountain Range, Jervis Inlet becomes Princess Royal Reach and Queens Reach with a branch to Princess Louisa Inlet and the famed Chatterbox Falls. A popular recreation destination in Jervis Inlet is Hotham Sound, an isolated and protected warm-water wilderness leading off the north shore of the Inlet. Hotham Sound is ringed by steep mountains and walls of sheer rock, with numerous tumbling waterfalls—majestic Pacific Northwest scenery! Hotham Sound is named after Admiral William Hotham of the Royal Navy, Commander-in-Chief in the Mediterranean in the 1790s. The peaceful Hotham Sound is a favorite destination for kayakers, who explore the sheltered coves and bays and enjoy wilderness camping amongst the Harmony Islands.

Egmont

Egmont is located at the head of Sechelt Inlet 51 km north of Sechelt and is the closest point you can drive to the property. Egmont was a small fishing village

back in the day and, to some extent, it still is to this day. However, in recent years it has evolved into a port that services recreationalists and contractors that frequent the neighbouring inlets and islands in the area. There is a government marina and two private marinas in the area. Bathgates Marina offers a general store, marine fuel, moorage and accommodation. The Back Eddy has marine fuel, moorage, accommodation and a restaurant/pub.

Sechelt

Sechelt's central location on the southern peninsula of the Sunshine Coast makes it a natural hub for business, culture and tourism. With a population of 9,490, this thriving village is surrounded by beautiful mountain scenery and a natural seaside beauty that lends a special charm to the attractions and amenities of the Heart of the Sunshine Coast.

The Sechelt area climate is characterized by mild, moist winters and warm, dry summers. Temperatures on the Coast range from freezing in winter to highs of 30°C (90°F) in summer. The annual rainfall is approximately 100 cm (40 in). The Sunshine Coast is sheltered from the open

Pacific, and the milder weather patterns result in very light snowfalls in the region.

The Sunshine Coast is split into two portions on either side of Jervis Inlet. Roughly speaking, the southern half between the ferry slips at Langdale and Earls Cove occupies the Sechelt Peninsula, while the northern half between the ferry slips at Saltery Bay and Lund sits on the Malaspina Peninsula.

Nelson Island

Nelson Island is named after Viscount Horatio Nelson, the hero of the British navy. Nelson Island sits at the mouth of Jervis Inlet guarding the secrets of Prince of Wales Reach and Queens Reach. Famous with the yachting crowd for the scenery and anchorages, the area has a lot to offer. It is one of the few spots on the Coast where you can feel the presence of the towering Coast Mountains while experiencing the expanse of the Strait of Georgia. It is a region with a mild, dry and semi-Mediterranean climate.

Princess Louisa Inlet

Princess Louisa Inlet is a natural wonder that is a must see. It is absolutely stunning! To completely understand how unique this offering is you first need to know how spectacular Princess Louisa Inlet is and the history of trying to protect the area for future generations to enjoy.

Princess Louisa Inlet (6 km long) is located near the head of Jervis Inlet (77 km long). Jervis inlet is the deepest fjord on the BC coast with a max depth of 2,402 feet.

A visit to Princess Louisa Inlet is like completely surrounding yourself by magnificent waterfalls. In fact, North America's highest waterfall is within Princess Louisa Inlet. James Bruce Falls cascades 2,755 feet down a sheer granite rock face which



then turns into the world-renowned Chatterbox Falls, which empties into the ocean.

Princess Louisa Inlet has been a popular destination from the Pacific Northwest's boating community for nearly 100 years.

James MacDonald purchased 45 acres in Princess Louisa Inlet in 1927. He rejected an offer from someone who desired to purchase his land in 1953 for \$400,000, a fortune back in those days. Instead, he gifted his property to the Boaters of the Pacific North West and kicked off a conservation project within the Inlet to protect the area for future generations to come. To date, there have been approximately 2,221 acres of land turned into parkland in the Inlet.

RECREATION

The surrounding waters and shoreline of Jervis Inlet offer excellent recreation opportunities, including boating, kayaking, fishing, prawning, crabbing, and scuba diving in some of BC's clearest waters. Nearby destinations like Hotham Sound and Princess Louisa Inlet are renowned for dramatic fjord scenery and sheltered anchorages. Trails, waterfalls, and old-growth forests invite hiking and exploration, while the inlet's rich marine

life—whales, dolphins, seals, and abundant bird species—makes wildlife viewing a daily highlight.

HISTORY

Jervis Inlet is a deep, glacier-carved fjord on British Columbia's Sunshine Coast with a rich maritime history. Named in 1791 by Spanish explorers after Rear Admiral Sir John Jervis, it has long been an important route for Indigenous peoples who fished and travelled its sheltered waters for generations. The inlet saw increased activity in the 19th and early 20th centuries with logging, fishing, and steamship travel supporting small coastal communities. Today, its dramatic cliffs, remote bays, and pristine wilderness make it a celebrated destination for boaters and adventurers seeking BC's rugged coastal beauty.

MAP REFERENCE

49°48'31.05"N and 123°57'53.74"W

BOUNDARIES

Please see mapping section, all boundaries are approximate.

SERVICES

The property is fully off-grid, equipped with solar panels, a battery bank, inverter, and backup generator for reliable power. Propane appliances, hot water, and a wood-burning fireplace ensure comfortable, self-sufficient living in a remote coastal setting.

IMPROVEMENTS

The property includes a three-bedroom, one-bathroom log home with an open-plan living area, vaulted ceilings, and a large wraparound deck offering expansive inlet and mountain views. Off-grid systems feature solar power with battery bank, inverter, backup generator, propane



appliances, and a wood-burning fireplace. Shared improvements include a dock, water system, and beach access, with 5 acres of exclusive use within a 52-acre shared tenure for secure moorage and easy shoreline access.

TAXES

\$1,716.81 being a 1/3 portion of total 2024 taxes of \$5,150.45

ZONING

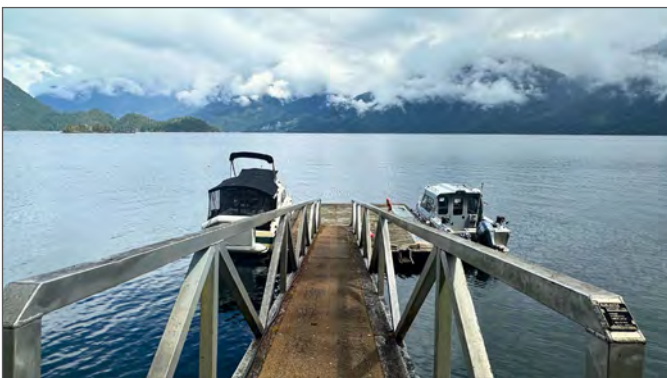
CD5 (Comprehensive Development Five)
RU2 (Rural Resource)
Sunshine Coast Regional District Zoning Bylaw No. 337, 190

Additional zoning information can be found on the Sunshine Coast Regional District website.

<https://www.scrd.ca/zoning-bylaws/>

LEGAL

As to an undivided 1/3 interest in Block 1 District Lot 4055 Plan 19747 - PID 006-971-130

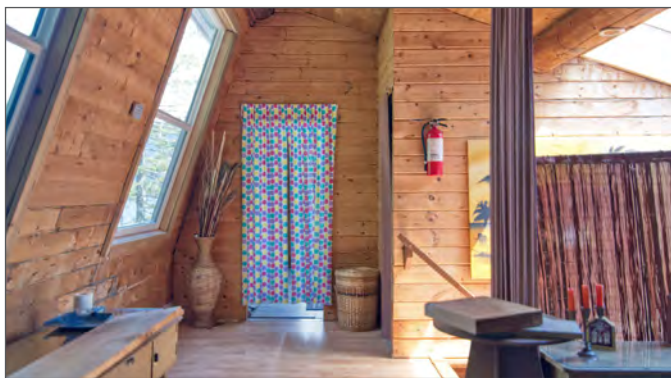


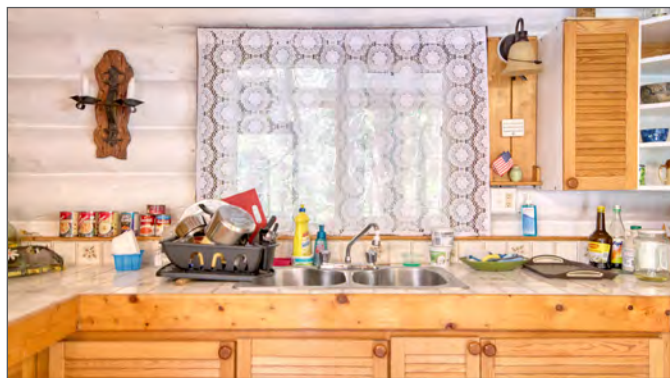
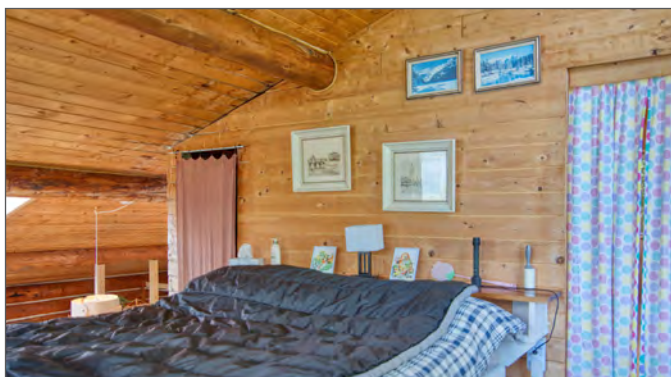


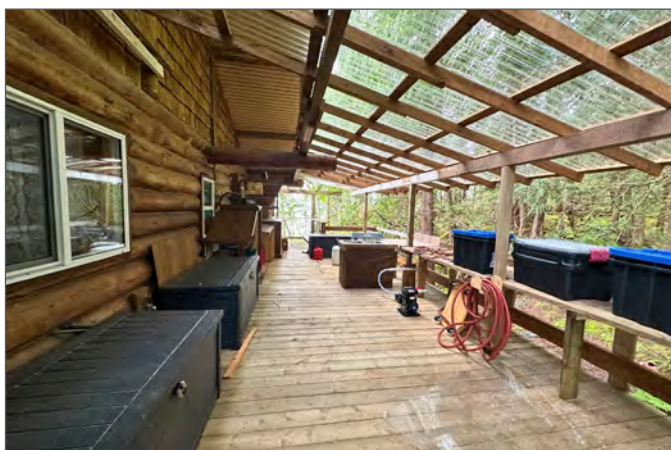


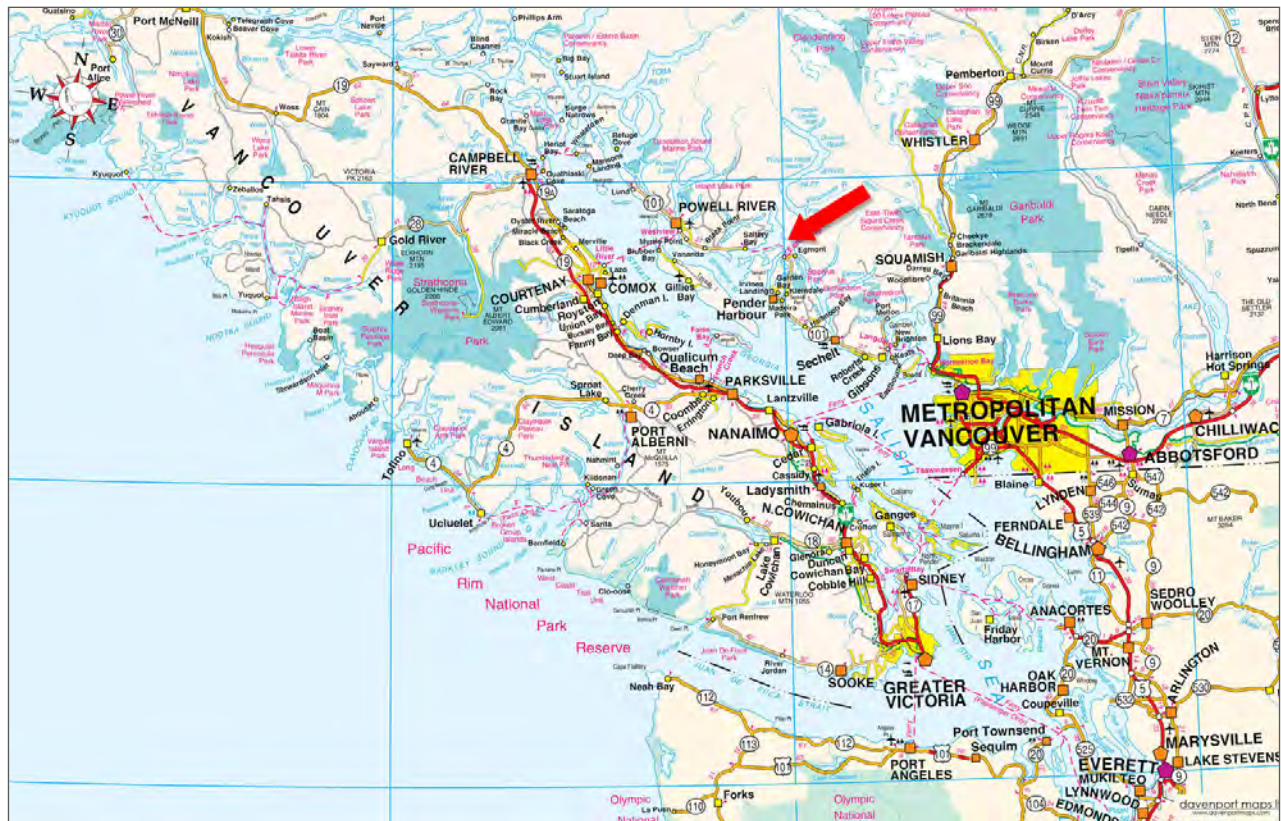
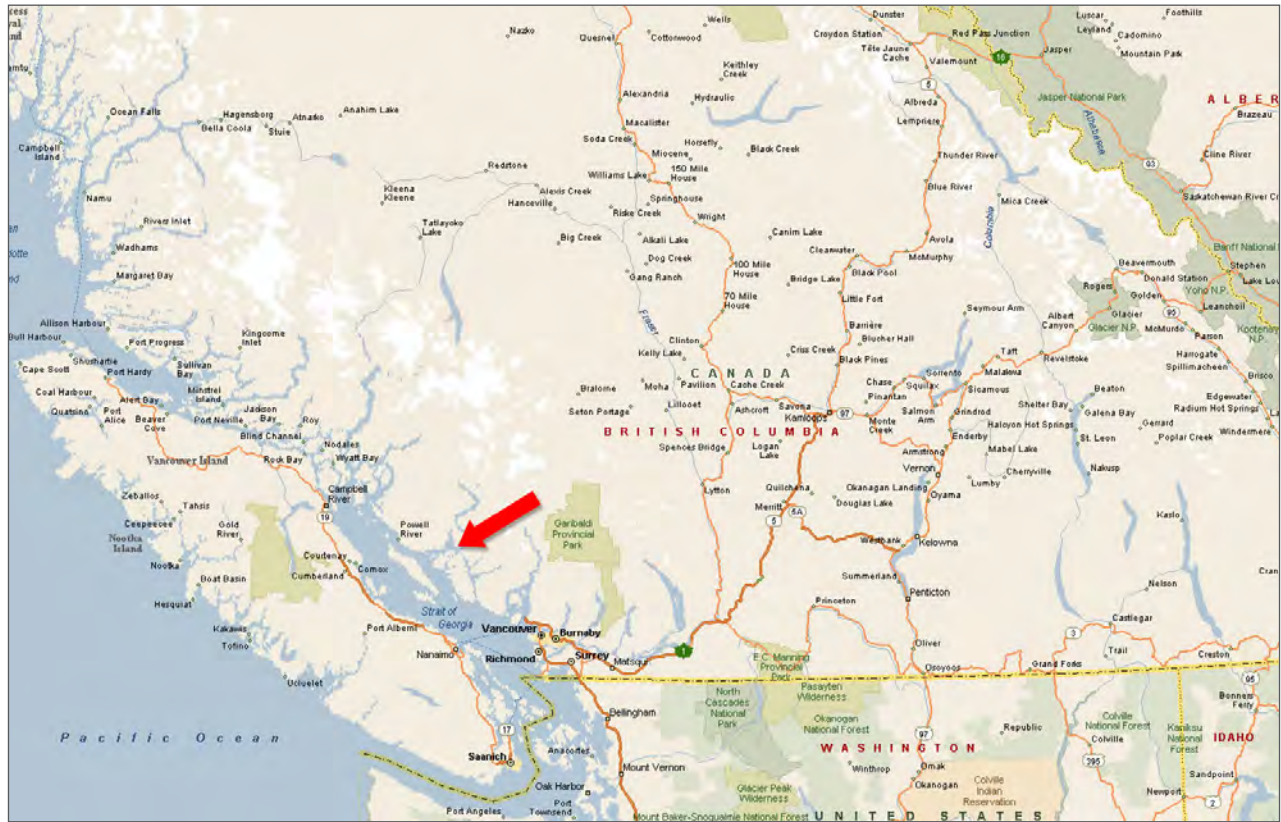




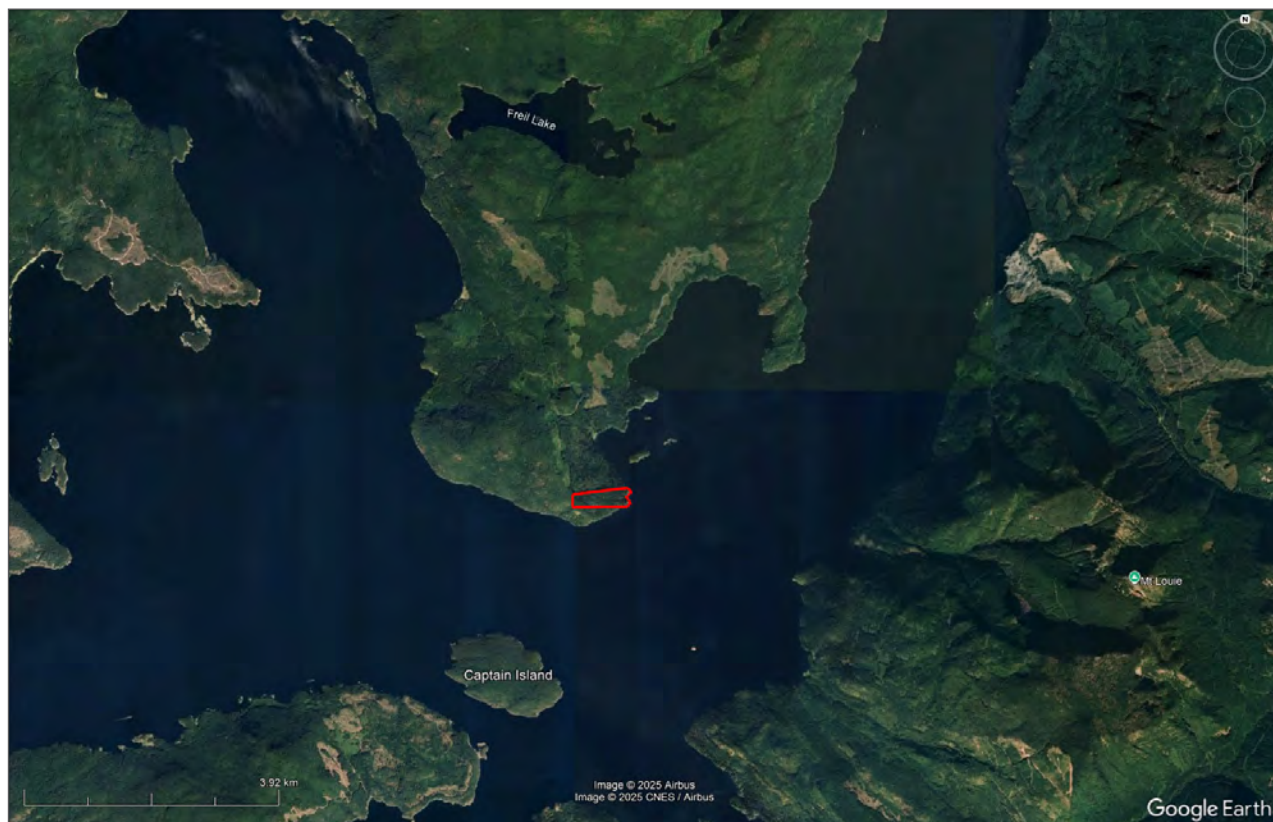


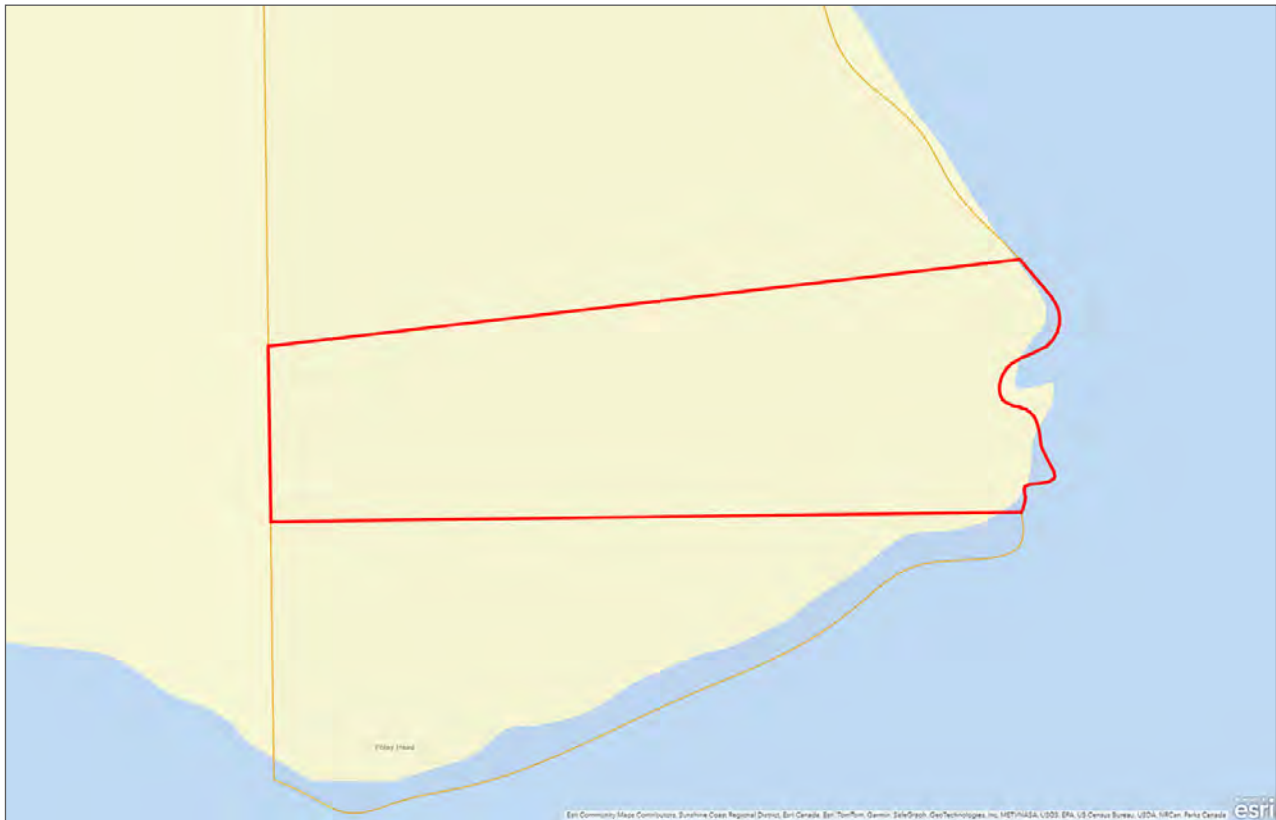












[illegible]



Marketing British Columbia to the World®



www.landquest.com



Jamie Zroback

BC Landpro Group
jamie@landquest.com
1 (604) 483-1605



Jason Zroback

BC Landpro Group
jason@landquest.com
1 (604) 414-5577

LandQuest® Realty Corporation
101 - 313 Sixth Street
New Westminster, BC V3L 3A7

Phone: (604) 664-7630 Fax: (604) 516-6504
Toll Free: 1-866-558-5263 (LAND)