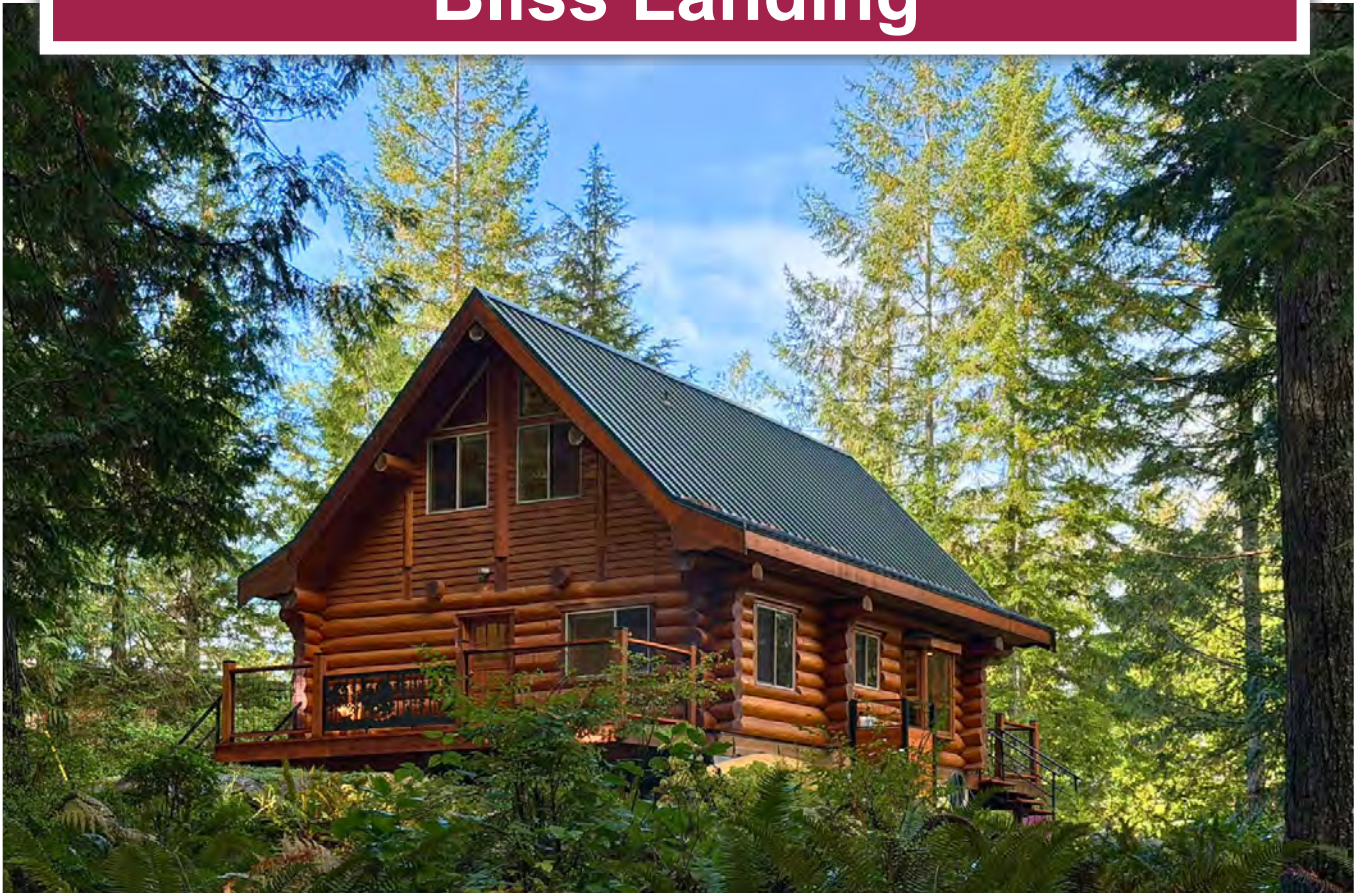




## Custom Fir Log Home in Bliss Landing



Jamie Zroback  
BC Landpro Group  
[jamie@landquest.com](mailto:jamie@landquest.com)  
1 (604) 483-1605

Jason Zroback  
BC Landpro Group  
[jason@landquest.com](mailto:jason@landquest.com)  
1 (604) 414-5577



Your Land. Your Legacy. Our Expertise.



“The Source” for Oceanfront, Lakefront,  
Islands, Ranches, Resorts & Land  
in British Columbia

[www.landquest.com](http://www.landquest.com)

# Custom Fir Log Home in Bliss Landing

## Coastal Comfort Surrounded by Nature

### PROPERTY DETAILS

<b>Listing Number:</b>	25284
<b>Price:</b>	\$749,000
<b>Taxes (2025):</b>	\$1,396.97

### SIZE

7,854 sq. ft. building envelope with shared 284 acres of common space.

### DESCRIPTION

Set within the private coastal enclave of Bliss Landing Estates, this 1,428 sq. ft. fir log home offers a tranquil forest setting with filtered ocean views. Built in 2005 by Hogan Log Homes, it embodies true West Coast craftsmanship, surrounded by ferns, cedars, and firs in one of British Columbia's premier boating destinations.

The main floor features an open-concept kitchen, dining, and living area centered around a modern Scandesign wood stove. Maple hardwood floors bring warmth, while radiant tile floors in the kitchen and bathroom add comfort. The well-equipped kitchen includes stainless-steel appliances and ample workspace. A main-floor bedroom enjoys forest views and the 4-piece bathroom features a soaker tub, separate shower, and stacked washer/dryer. Sliding glass doors open to a 24 × 12 ft. sundeck, ideal for outdoor dining.

Upstairs, a 23'6 x 18 ft. family/TV room offers space for guests or children, complete with a 2-piece bathroom and access to a covered sundeck—

perfect for morning coffee among the treetops. A second spacious 23'6 x 11'10 bedroom completes the upper floor, both rooms carpeted for added comfort.

The home includes a 24 x 8 ft deck at the entrance, a metal roof, and a large crawl space for storage. Custom design details include large wooden oars used as handrails and log-framed railings with inlaid metal art of coastal forest scenery, adding unique character throughout. Interior logs are finished with a clear stain, creating a bright, natural feel. Outside, a firepit area and outdoor shower complement the setting.

Each owner of Bliss Landing holds title as a tenant-in-common to one or more undivided interests in Bliss I, Bliss II, Bliss III, or Bliss IV, along with a share in Bliss Landing Estates Ltd. This lot relates to a 1/44 undivided interest in Bliss I, with privacy ensured by the surrounding common land.

Bliss Landing Estates is located just north of Lund and at the gateway to Desolation Sound. The community offers a well-protected deep-water marina, boat launch, tennis and pickleball courts, playground, full-time caretaker, and kayak/boat storage. The marina, upgraded in the past year, is inspected annually by divers, and large vessels are moored here seasonally thanks to its protection and reasonable moorage rates.

Situated in one of BC's best boating, kayaking, and fishing regions, the area is known for excellent salmon fishing, prawning, and crabbing, with abundant marine wildlife including orca and humpback whales, dolphins, and sea lions. Savary Island's white sand beaches are a short boat ride





away, offering warm waters, Caribbean-like sands, and ideal conditions for swimming, picnicking, and beachcombing.

Just 15 minutes south, Lund serves as the gateway to the Sunshine Coast, with restaurants, a general store, fuel dock, bakery, hotel, and tour operators. The property is road-accessible and serviced with power, water, and reliable TELUS reception. There is also direct floatplane access with seasonal scheduled Kenmore Air flights from Seattle to the Bliss Dock, and daily flights from Vancouver to Powell River and Comox International Airports.

Bliss Landing is a rare opportunity to own a piece of BC's spectacular coastline, perfect as a recreational retreat or full-time residence.

## LOCATION

The gated community of Bliss Landing is located at the entrance to Desolation Sound on BC's Sunshine Coast, 10 km north of Lund by road or 15 minutes by boat.

## DIRECTIONS

Contact the listing agent.

## AREA DATA

Copeland Island Provincial Marine Park  
Bliss Landing is situated near an area known locally as The Ragged Islands or Copeland Islands Group. The 437-hectare archipelago comprises of four islands and 14 islets that protect narrow Thulin Passage, the main passageway for boats and kayakers traveling between the Discovery Islands and Desolation Sound, which is directly in front of Bliss Landing.

Wilderness camping and fabulous kayaking attracts outdoor enthusiasts to this group of small, moss-covered rocky islands. Other leisure pursuits in the area include swimming, fishing, snorkeling and scuba diving. The Copeland Islands and Savary Island lie offshore from Lund on the Malaspina Peninsula of the Sunshine Coast. You can see the white sandy beaches of Savary beckoning in the distance. The Copelands lie 2 km northwest of Lund and southwest of Bliss Landing.

## **Desolation Sound Provincial Marine Park**

Desolation Sound Provincial Marine Park (8,256 hectares) is British Columbia's largest marine park. This includes more than 60 km of shoreline, several offshore islands and a gradually rising upland that contains a number of lakes, waterways and waterfalls. Unwin Lake, a 173-hectare body of fresh water, is the park's largest. Set back to the north and east, Coast Mountains soar to more than 2,400 metres. The warm waters surrounding the area teem with sea life. Ideal for warm water swimming, scuba diving and feasting on your catch of the day, salmon, cod, prawns, crab, clams and oysters. Plenty other tasty morsels lie beneath on the ocean's floor. To acquire them you must put on your scuba gear and get a little wet, or you could take a short drive by boat or car to the Laughing Oyster Restaurant at the head of Okeover Inlet, which is one, if not the best, place to eat in the overall area of Powell River.

## **Lund**

Just around the corner—about a 15-minute drive or boat ride from Bliss Landing—lies the historic community of Lund, named after a city in Sweden. Established in 1899 when the Thulin Brothers began construction on the hotel—still in operation today—Lund has a rich maritime heritage. Recently, the hotel underwent a major renovation under new ownership by the local First Nation, preserving its character while updating its amenities. In its early years, Lund served primarily as a port for fishermen, but today it thrives as a vibrant destination for visitors drawn to its charm, well-provisioned general store, and selection of shops, restaurants, and cafés. Lund also has a bakery, fuel dock, post office, liquor store, and tour operators offering fishing charters, water taxi services, and eco-adventures. It serves as the gateway to the neighboring Gulf Islands, Desolation Sound, and surrounding marine parks, making it a bustling hub for both residents and visitors.

## **RECREATION**

Boating, warm water swimming, endless sightseeing, fishing, scuba diving, hiking and kayaking.

## **MAP REFERENCE**

50° 1'58.49"N and 124°48'56.45"W

## **BOUNDARIES**

Please see mapping section, all boundaries are approximate.

## **SERVICES**

Hydro, community water, reliable TELUS cell service, and year-round resident caretaker.

## **IMPROVEMENTS**

Custom 1,438 sq. ft. log home

## **ZONING**

### **Rural Residential**

Electoral Area A Official Community Plan Bylaw No. 500, 2015

Additional zoning information can be found on the Qathet Regional District website: [qathet.ca/land-use/plans-zoning/](http://qathet.ca/land-use/plans-zoning/)

## **LEGAL**

An undivided 1/44 interest in District Lot 4201 Group 1 New Westminster District Except: That Part Dedicated as Road by Deposit of Plan 14637

PID 002-490-986

Includes share interest in Bliss Landing Estates Ltd. and exclusive use of Bliss I, Site 29





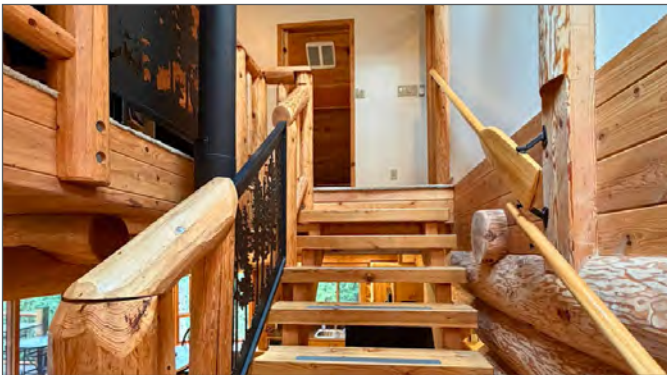




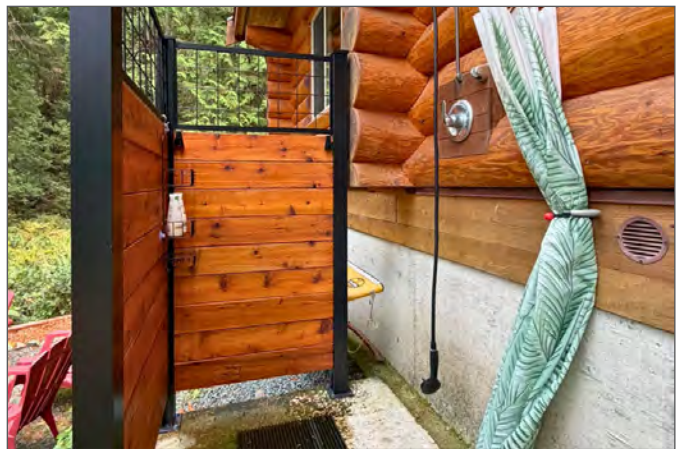












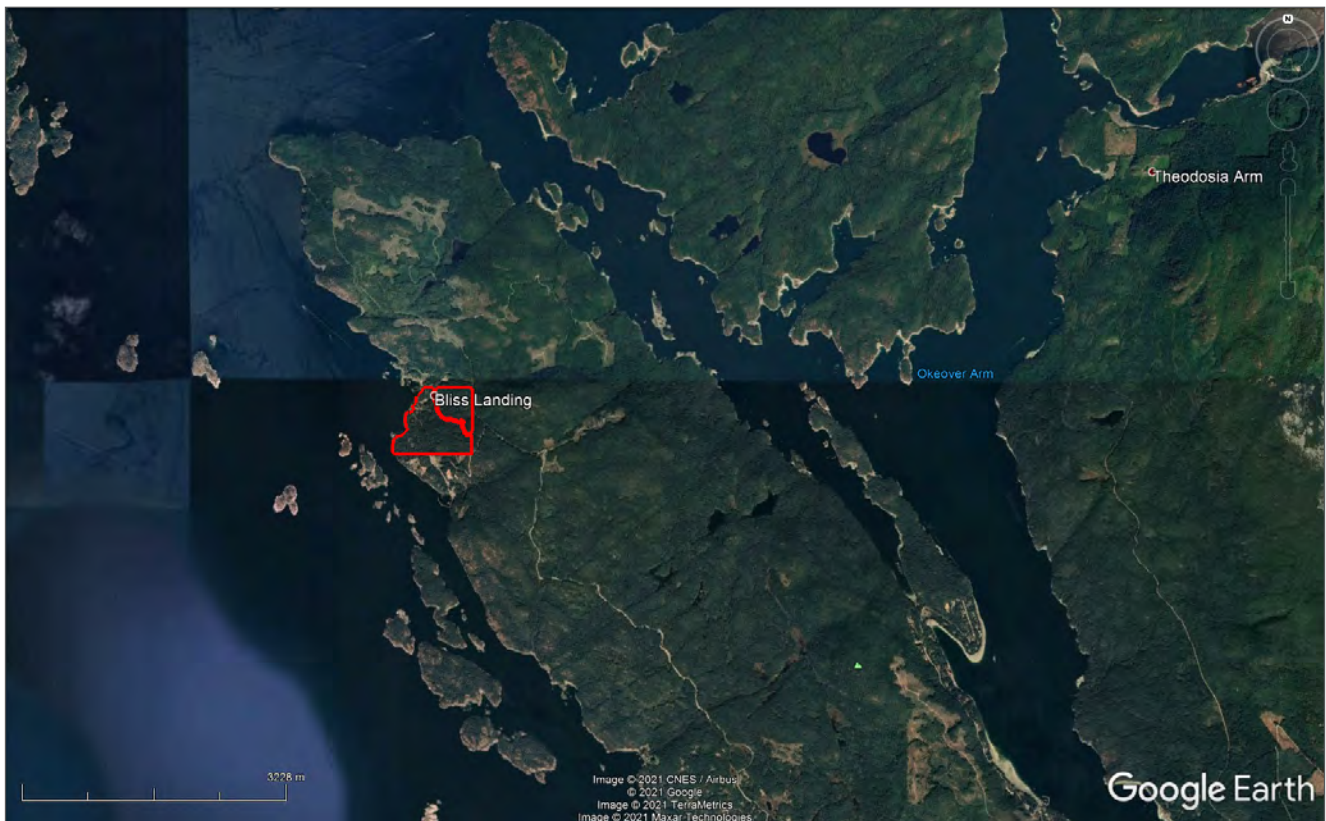
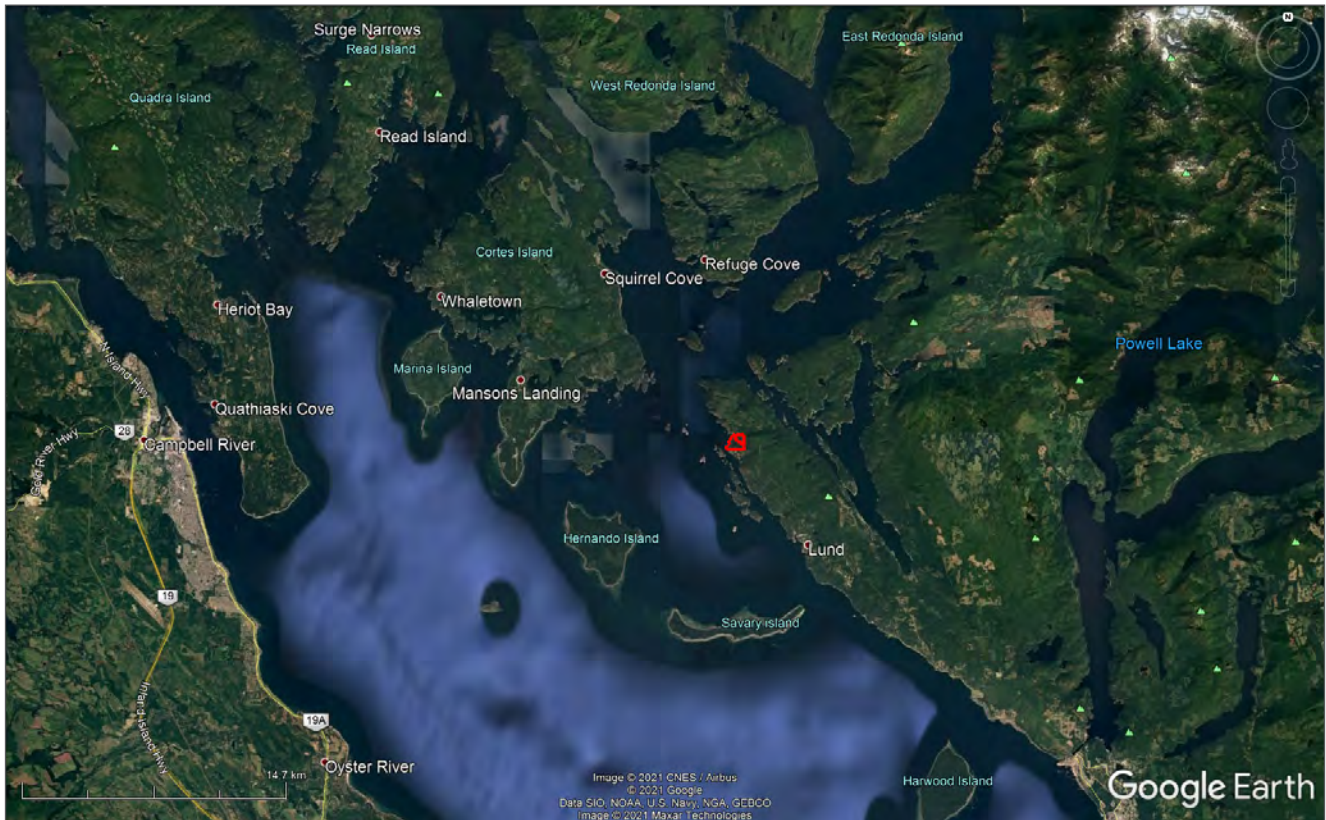




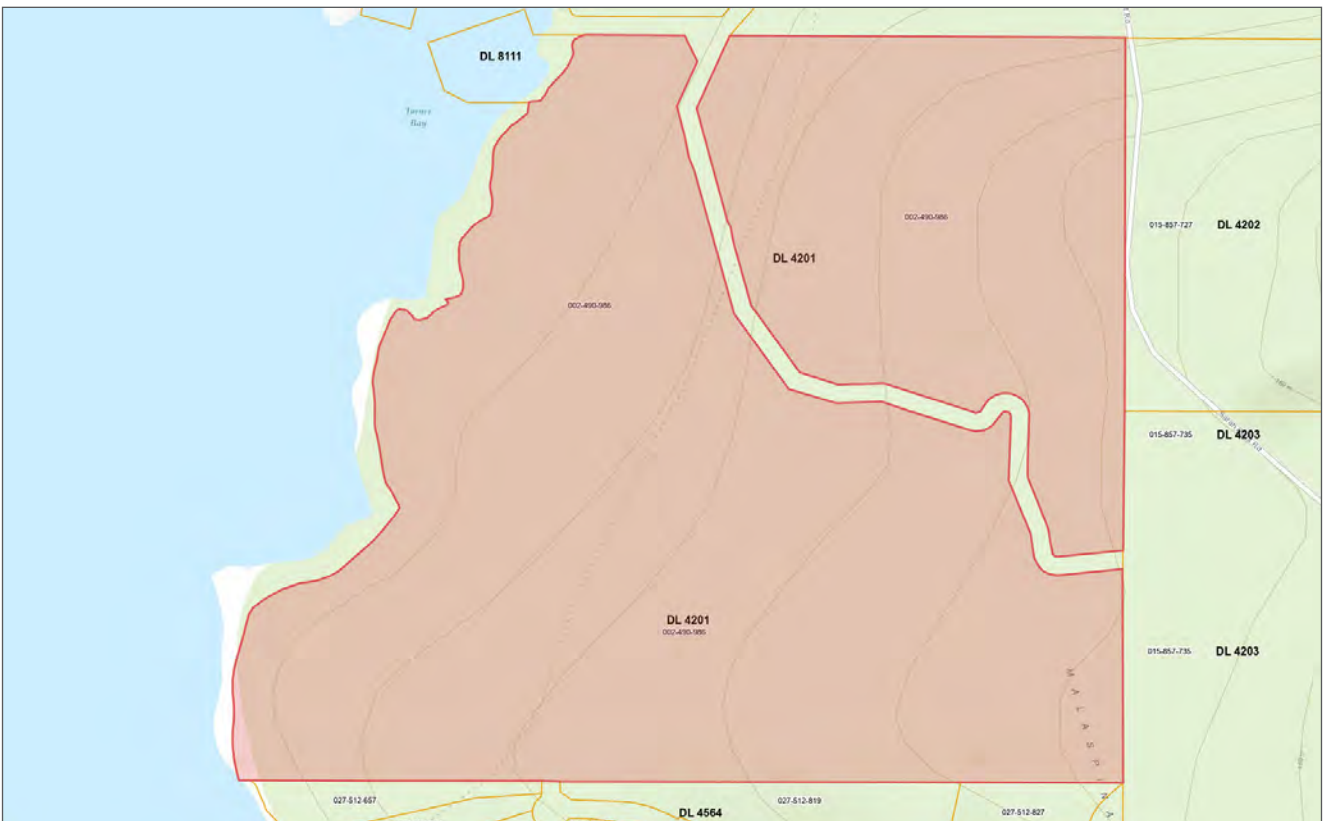
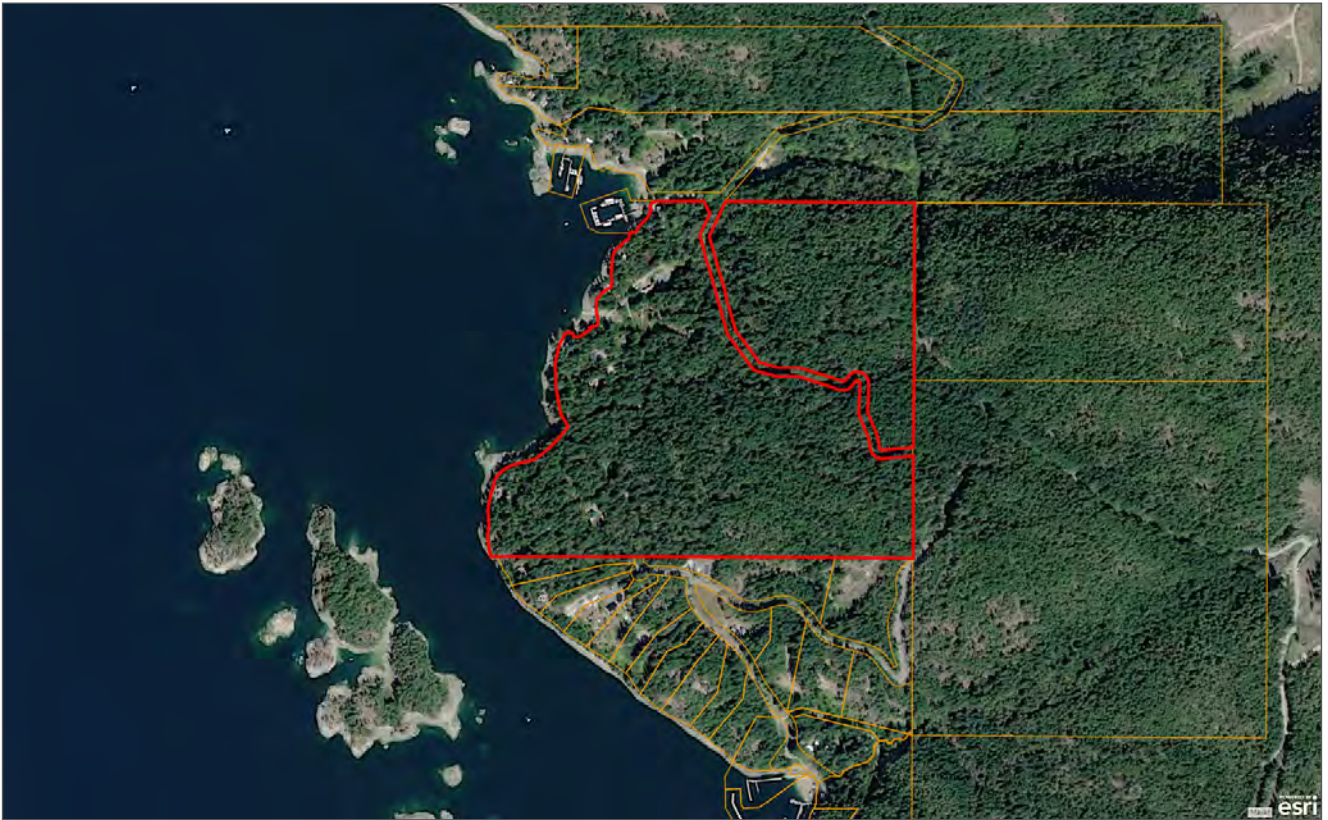




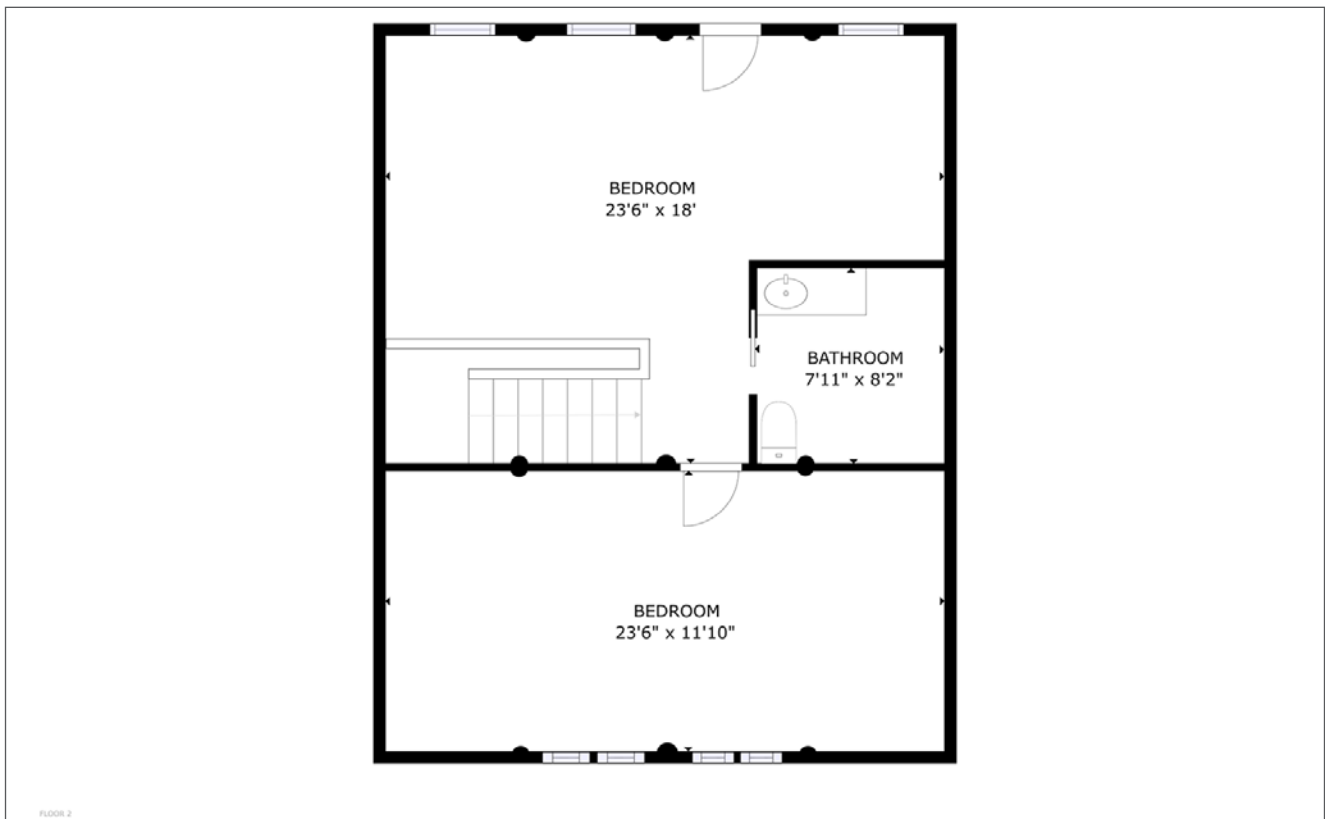
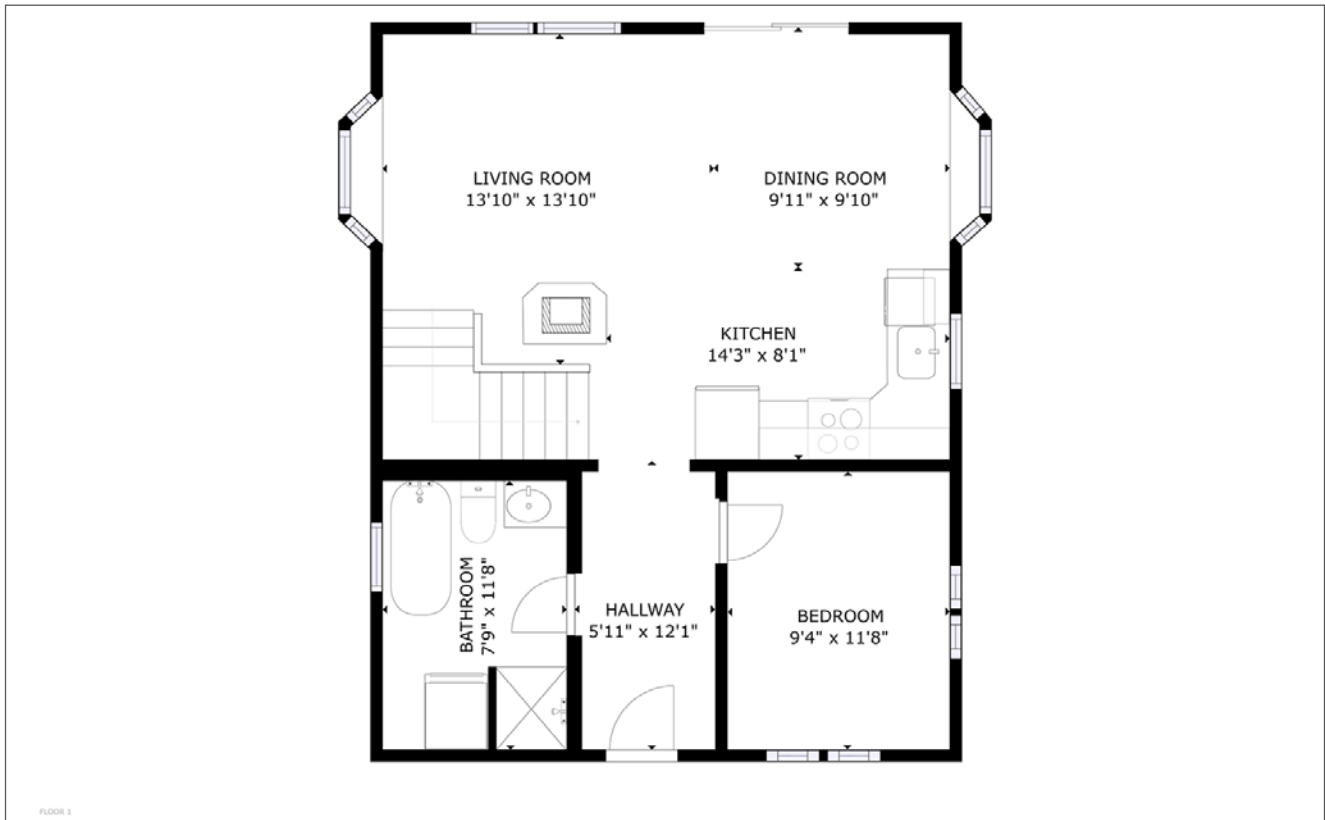














Your Land. Your Legacy. Our Expertise.



[www.landquest.com](http://www.landquest.com)



**Jamie Zroback**

BC Landpro Group  
[jamie@landquest.com](mailto:jamie@landquest.com)  
1 (604) 483-1605



**Jason Zroback**

BC Landpro Group  
[jason@landquest.com](mailto:jason@landquest.com)  
1 (604) 414-5577

---

LandQuest® Realty Corporation  
101 - 313 Sixth Street  
New Westminster, BC V3L 3A7

Phone: (604) 664-7630 Fax: (604) 516-6504  
Toll Free: 1-866-558-5263 (LAND)

Our property descriptions and geographical information are taken from the BC Assessment Authority, Land Titles Office, government maps and other sources. While LandQuest® does not guarantee the information, we believe it to be accurate, but should not be relied upon without verification. This communication is not intended to cause or induce breach of an existing agency agreement. This property is listed on the MLS®. The trademarks MLS®, Multiple Listing Service® and the associated logos are owned by The Canadian Real Estate Association (CREA) and identify the quality of services provided by real estate professionals who are members of CREA.