



**Beautifully Appointed Home  
Steps from Quesnel River**



**Cole Westersund**  
Personal Real Estate Corporation  
cole@landquest.com  
(604) 360-0793



WESTERN LAND GROUP

**Chase Westersund**  
Personal Real Estate Corporation  
chase@landquest.com  
(778) 927-6634



Your Land. Your Legacy. Our Expertise.



“The Source” for Oceanfront, Lakefront,  
Islands, Ranches, Resorts & Land  
in British Columbia

[www.landquest.com](http://www.landquest.com)

# Beautifully Appointed Home Steps from Quesnel River

## PROPERTY DETAILS

<b>Listing Number:</b>	25206
<b>Price:</b>	\$399,000
<b>Taxes (2025):</b>	\$1,785.39
<b>Size:</b>	0.57 of an acre
<b>Zoning:</b>	RS2

## DESCRIPTION

This spacious and inviting 1,800± sq. ft., 2-bedroom, 2-bathroom home on 0.57 acres sits across the road from a peaceful stretch of the Quesnel River, right at the outlet of the pristine Quesnel Lake in Likely, British Columbia. The home is perfectly positioned to take advantage of its spectacular setting, with large windows that flood the interior with natural light and offer stunning views of the river and surrounding nature. Patio doors from the main level open onto a generous covered deck, creating an ideal outdoor space for entertaining, relaxing, or simply watching the water flow by.

Inside, the open-concept layout connects the kitchen, dining, and living areas with ease. The kitchen features stone countertops, a central island, ample cabinetry, and quality appliances, flowing into the dining area and through French doors into a spacious living room. A Blaze King wood stove adds charm and efficient warmth, while vaulted ceilings and a mezzanine enhance the sense of space and light.

Upstairs, two large bedrooms provide comfort for family or guests. The primary opens to a private covered balcony with beautiful river views,

perfect for morning coffee or evening sunsets. A full bathroom serves the upper level, and the mezzanine offers flexible space for a reading nook, office, or storage. The home's south-facing orientation provides year-round natural light and passive warmth.

Outside, the 16' x 24' detached storage shop offers excellent utility for tools, recreational gear, or hobby space. A double pole shed provides covered parking for vehicles or your RV. In addition, there is a full-service RV hookup already in place with water, power, and septic, offering additional versatility whether for guests, short-term rentals, or future development potential. Set in a quiet riverside community, this property delivers the best of both comfort and nature. It is ideal for those looking to enjoy the Cariboo lifestyle with direct access to world-class fishing, boating, and outdoor recreation.

## LOCATION

4871 Quesnel Forks Road - Likely, BC

## DIRECTIONS

Contact the listing agent.

## AREA DATA

Likely is a quiet, historic community located at the western tip of Quesnel Lake in the Cariboo region of British Columbia. Surrounded by mountains, forests, and pristine waterways, the area offers exceptional access to fishing, boating, hiking, and outdoor recreation. Rich in Gold Rush history, Likely serves as a gateway to Quesnel Forks and other heritage sites, while also offering a peaceful setting for those seeking nature, privacy, and a

slower pace of life. The community is supported by tourism, forestry, and outdoor enthusiasts, with essential services available and a strong connection to the surrounding wilderness.

### Home to the World's Deepest Fjord Lake

Quesnel Lake is one of the deepest fjord lakes on Earth, plunging over 610 metres (2,000 feet). Formed by glacial forces, its dramatic underwater topography makes it a rare geological wonder. Renowned for its crystal-clear water, Quesnel Lake serves as a benchmark for water quality studies. Its unspoiled watershed and limited human impact preserve its exceptional clarity.

### Gold Rush Legacy

Likely was a vital supply hub during the Cariboo Gold Rush of the 1860s. One of the few surviving towns from that era, it still features heritage landmarks like the Bullion Pit, once among North America's largest hydraulic mining sites.

### Gateway to Backcountry Adventure

Likely offers direct access to some of BC's most remote and scenic wilderness. From Quesnel Lake, paddlers and boaters can explore endless undeveloped shoreline, alpine trails, and secluded fishing spots with little to no traffic.

### Unique Climate Zone

Thanks to the moderating effects of Quesnel Lake, the Likely area enjoys a mild microclimate with longer growing seasons and gentler winters than other interior regions at similar latitudes.

### RECREATION

Likely and the Quesnel Lake area are a haven for outdoor recreation year-round. In summer, the lake's clear, deep waters are ideal for boating, kayaking, swimming, and some of the best trout fishing in the province. Sandy beaches and quiet coves make it perfect for relaxed family outings or exploring by paddle. Nearby trails like Cameron



Ridge offer scenic hiking with views over the lake and valley. The historic Quesnel Forks ghost town adds a unique cultural stop for day trips, along with waterfalls, mountain viewpoints, and forest roads to explore. In winter, the area transforms into a playground for snowmobiling, snowshoeing, cross-country skiing, and ice fishing, with ample access to the backcountry. Whether you enjoy quiet nature walks or active adventure, this region offers true four-season recreation surrounded by unspoiled wilderness.

### MAP REFERENCE

52°37'6.84"N and 121°34'38.80"W

### SERVICES

- Hydro
- Water
- Septic

### LEGAL

LOT 6, PLAN PGP22833, DISTRICT LOT 861, CARIBOO LAND DISTRICT, LIKELY

PID 008-734-691





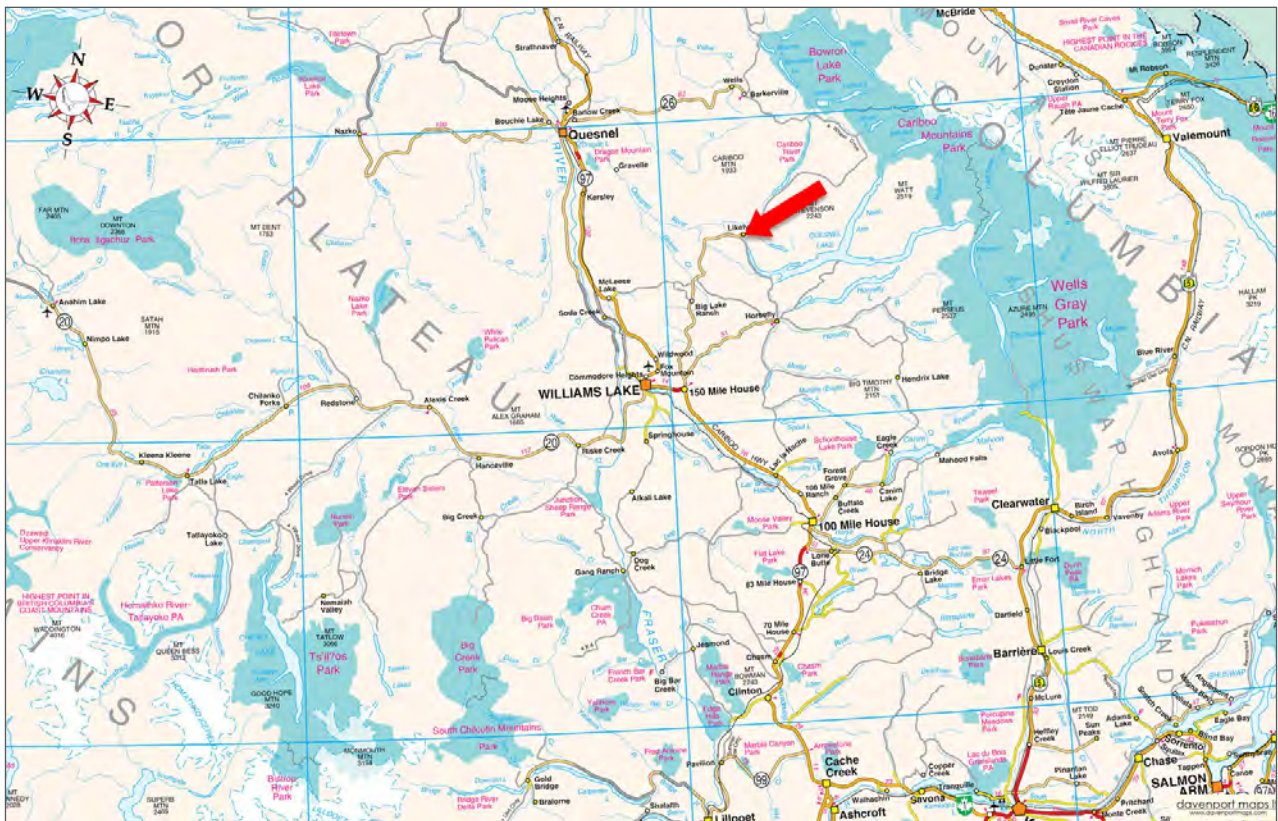






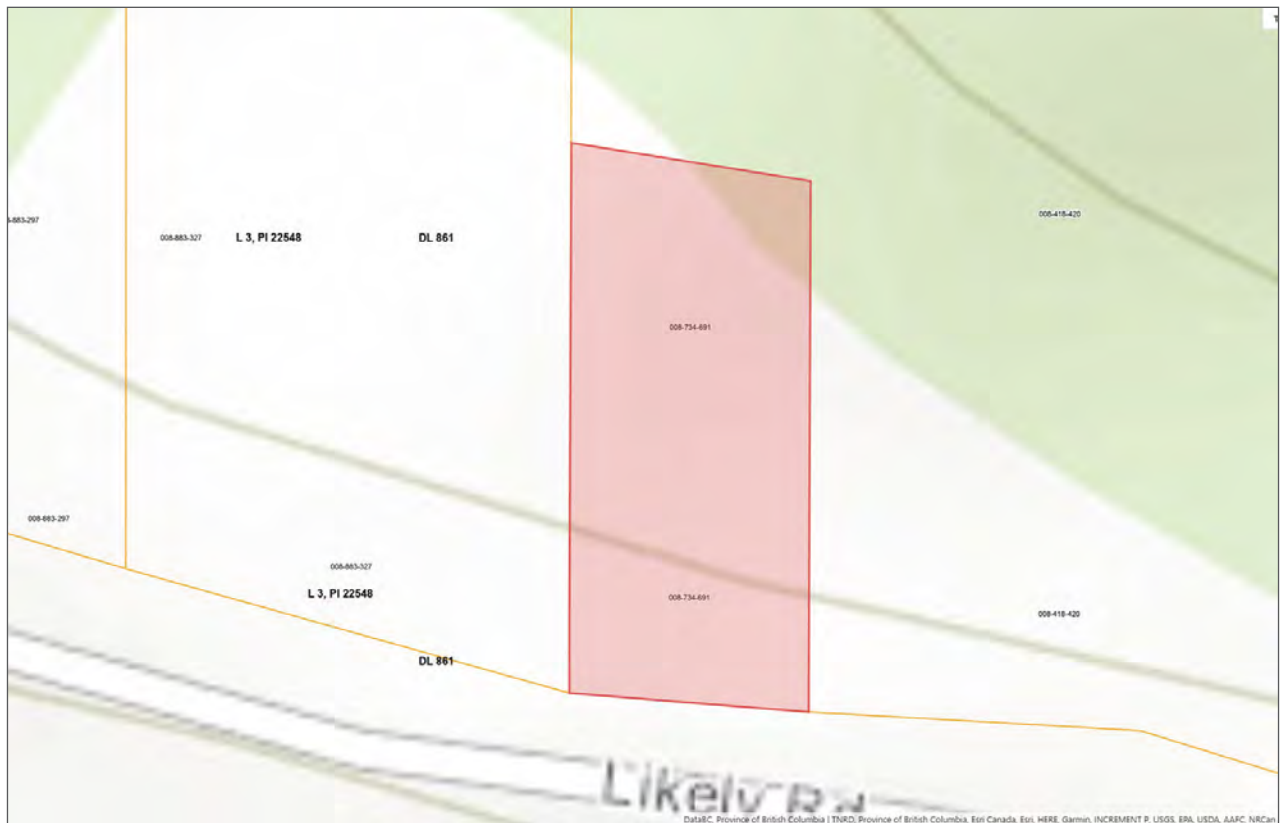
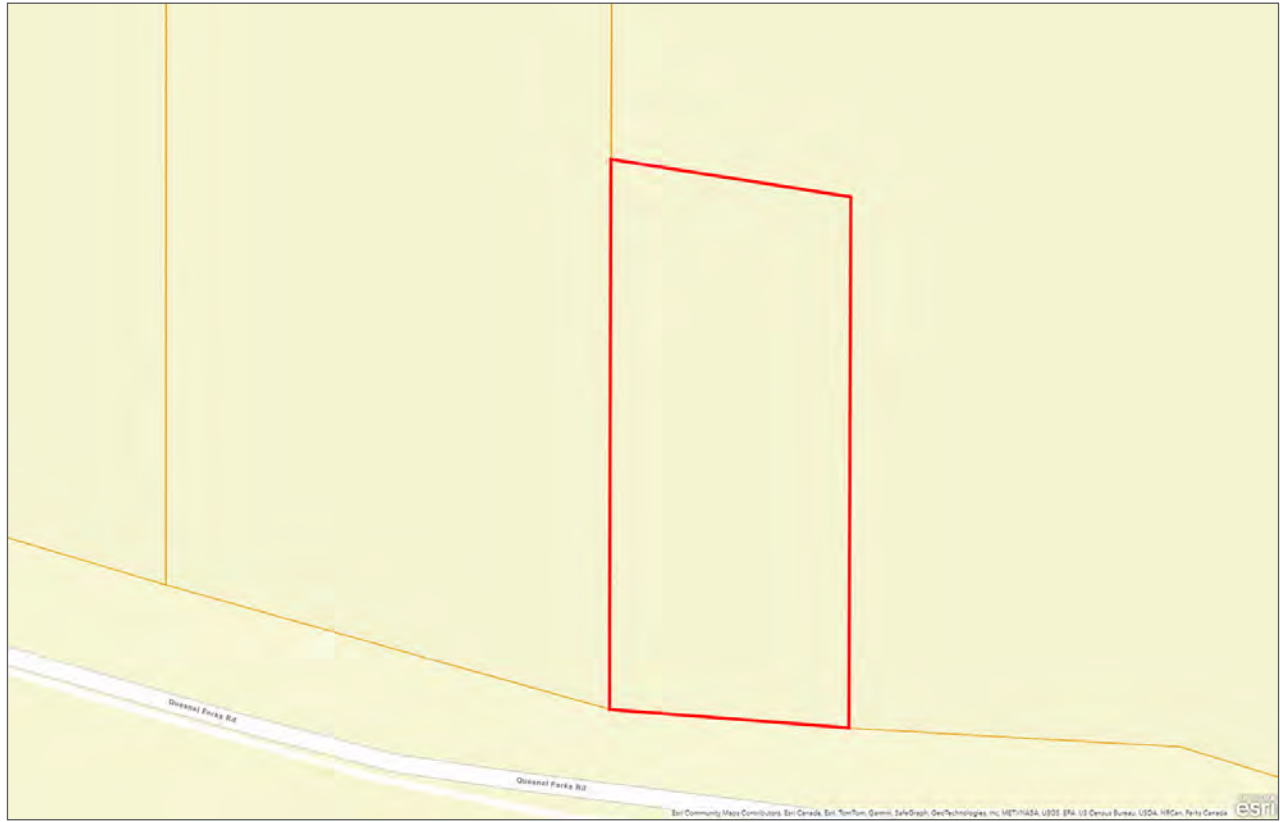














Your Land. Your Legacy. Our Expertise.



[www.landquest.com](http://www.landquest.com)



**Cole Westersund**  
Personal Real Estate Corporation  
Representative  
[cole@landquest.com](mailto:cole@landquest.com)  
(604) 360-0793



**Chase Westersund**  
Personal Real Estate Corporation  
Representative  
[chase@landquest.com](mailto:chase@landquest.com)  
(778) 927-6634



WESTERN LAND GROUP

LandQuest® Realty Corporation  
101 - 313 Sixth Street  
New Westminster, BC V3L 3A7

Phone: (604) 664-7630 Fax: (604) 516-6504  
Toll Free: 1-866-558-5263 (LAND)