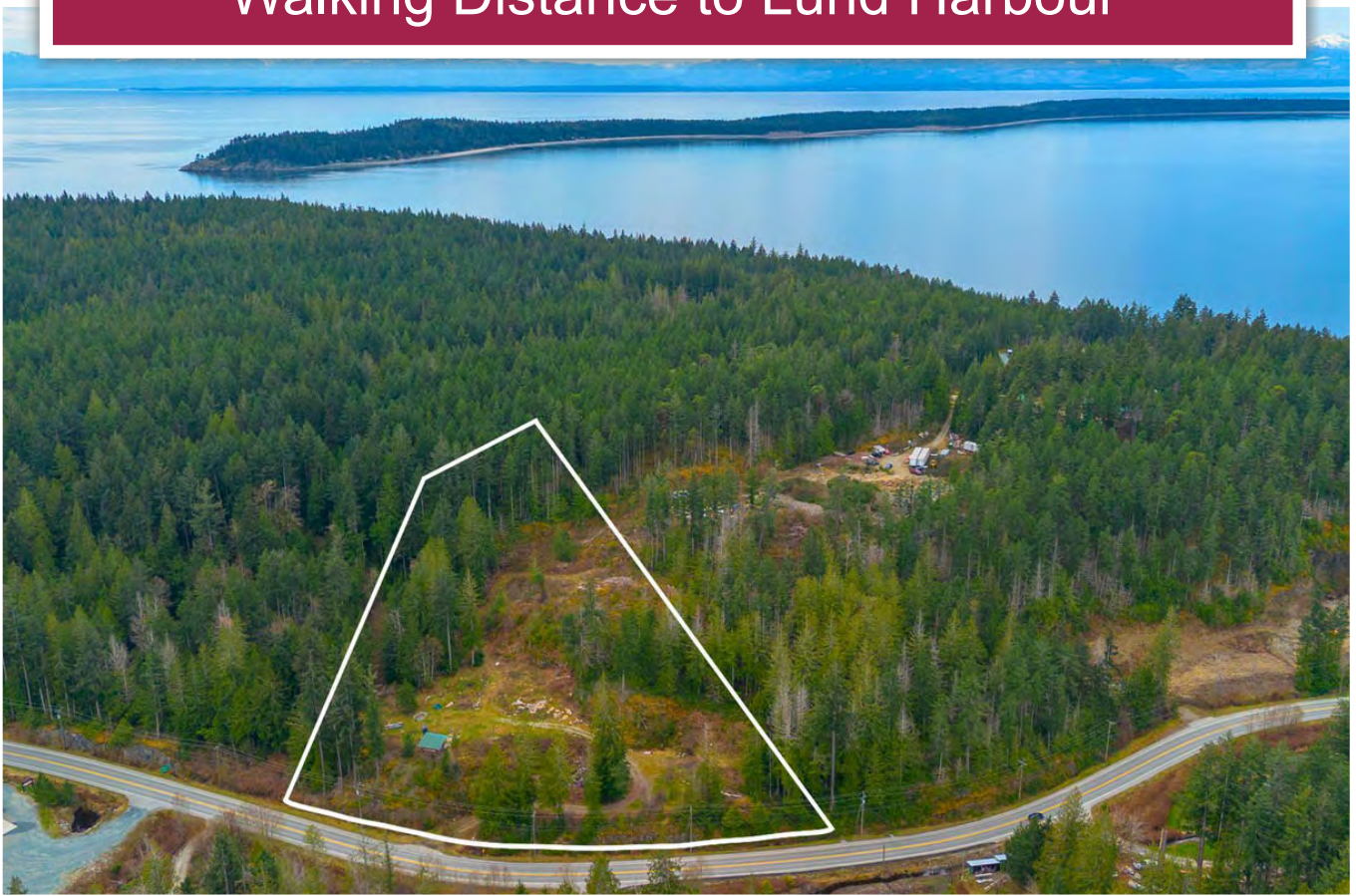




**Affordable 5.09 Acres**  
Walking Distance to Lund Harbour



Jamie Zroback  
BC Landpro Group  
jamie@landquest.com  
1 (604) 483-1605

Wyatt Hansen  
wyatt@landquest.com  
(250) 207-6929

Jason Zroback  
BC Landpro Group  
jason@landquest.com  
1 (604) 414-5577



Your Land. Your Legacy. Our Expertise.



“The Source” for Oceanfront, Lakefront,  
Islands, Ranches, Resorts & Land  
in British Columbia

[www.landquest.com](http://www.landquest.com)

# Affordable 5.09 Acres

## Walking Distance to Lund Harbour

### PROPERTY DETAILS

<b>Listing Number:</b>	26083
<b>Price:</b>	\$339,000
<b>Taxes (2025):</b>	\$2,001.35
<b>Size:</b>	5.09 acres

### DESCRIPTION

5.09-acre property located right in Lund with direct highway access and only a short walk to Lund Harbour. The lot is mostly cleared and features an established internal road network, providing easy access throughout the property, along with a power shed offering 200-amp service. Multiple cleared building sites are already in place, giving flexibility for a primary residence, recreational cabin, or future development. The upper portion of the property transitions into a more natural setting with mature arbutus trees, added privacy, and mountain views.

Lund is a well-known coastal gateway with a full-service marina, restaurants, shops, and a community store, and is the main access point to Savary Island, Hernando Island, and the surrounding island groups. Nearby Okeover Arm provides protected waters and is a launching point into Desolation Sound, one of the most sought-after boating destinations on the coast. The area offers excellent fishing, prawning, and crabbing, along with boating, kayaking, and a wide range of outdoor recreational opportunities.

The property benefits from a sunny exposure and a quiet setting while still being close to the amenities

and services of Lund Village. With parking in Lund often limited, this offering also presents a practical opportunity for secure parking and storage for those travelling to Savary Island, Hernando Island, and surrounding coastal areas.

A well-located acreage offering flexibility, access, and strong recreational appeal. Call to book your appointment to view today!

### LOCATION

Lund, BC

### DIRECTIONS

Contact the listing agent.

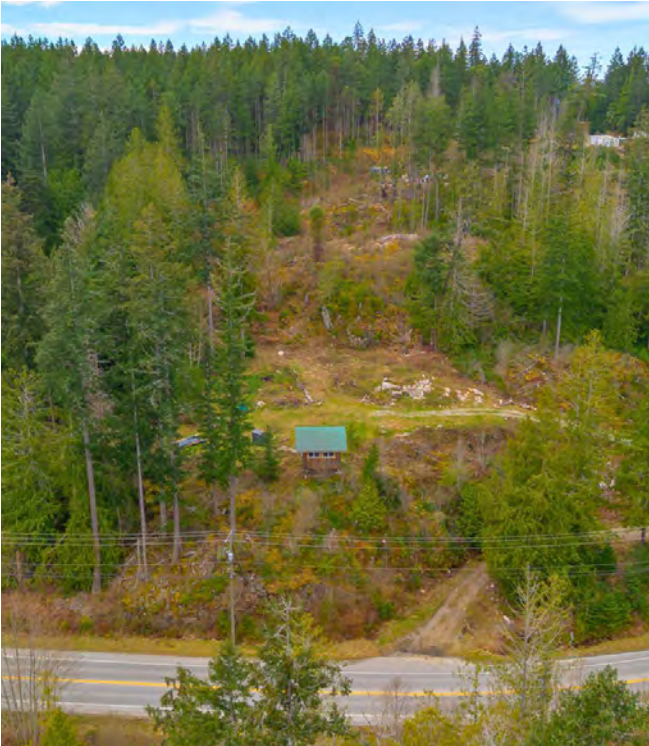
### AREA DATA

#### Lund

Only a few minutes drive from the government wharf is the historic community of Lund, where you can find a grocery and liquor store, a few restaurants, pub, marine mechanics, tour and recreation services.

The area of Lund was established in 1899 when the Thulin Brothers started to build the hotel, which is still in use today. Recently the hotel has changed ownership and has seen a major renovation. For most of the early years Lund served as a port for fisherman. Today Lund thrives on its attraction from tourists.

Desolation Sound, Savary Island, Harwood Island, Bliss Landing and the Copeland Islands are areas of interest and are all located in close proximity



to the property. The area is rich in natural beauty and abundant with sea life. The area is also rated among the best in the world for its scuba diving.

### **Powell River**

Powell River, with a population of approximately 20,000 people, is the largest center closest to the property, and just a 20-minute drive south. Powell River is an increasingly popular community to live in because of its low cost of living and a quality standard of life. This friendly seaside town offers 'big city' amenities and luxury services without the 'big city' parking and traffic hassles. A full-service hospital, medical, dental, chiropractic, physiotherapy and massage therapy clinics, health and beauty spas, a newly renovated recreation complex, full banking facilities, marine services, outdoor guides and outfitters, challenging championship par-72 golf course, plus a wide range of retail outlets, art galleries, gift shops and fine dining are all within easy access.

The Upper Sunshine Coast, from Saltery Bay to Desolation Sound, boasts approximately 1,900 hours of sunshine annually. Summer temperatures vary from 20 to 30 degrees Celsius (70 to 90 degrees Fahrenheit) while winter temperatures are mild.

### **RECREATION**

Boating, kayaking, canoeing, sailing, fishing, hiking, diving, swimming and biking.

### **MAP REFERENCE**

49°58'36.99"N and 124°45'3.64"W

### **BOUNDARIES**

Please see mapping section, all boundaries are approximate.

### **SERVICES**

Hydro

### **IMPROVEMENTS**

- Tool shed
- Road network
- Cleared building sites

### **ZONING**

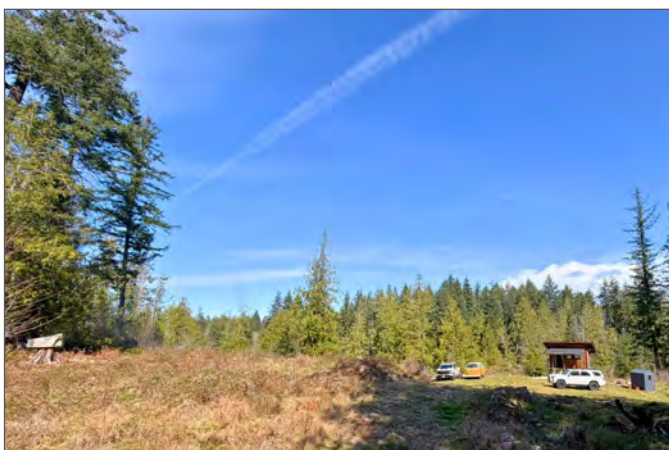
Rural Mixed Use  
Electoral Area A Official Community Plan  
Bylaw No. 500, 2015

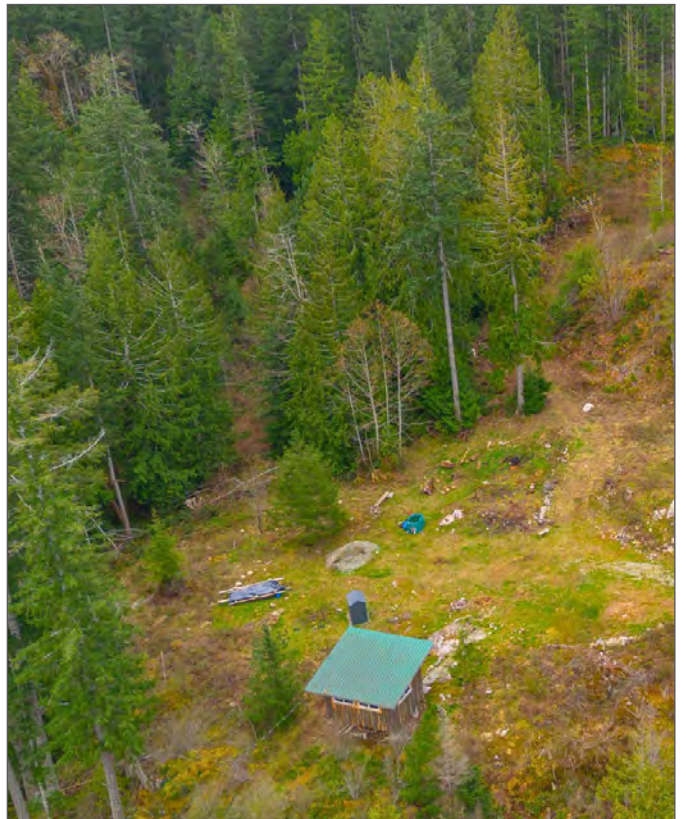
### **LEGAL**

Lot 2 District Lot 1611 Plan 16808  
PID 007-671-911

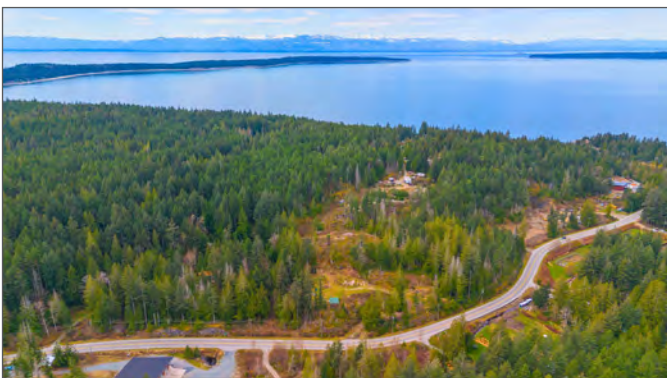
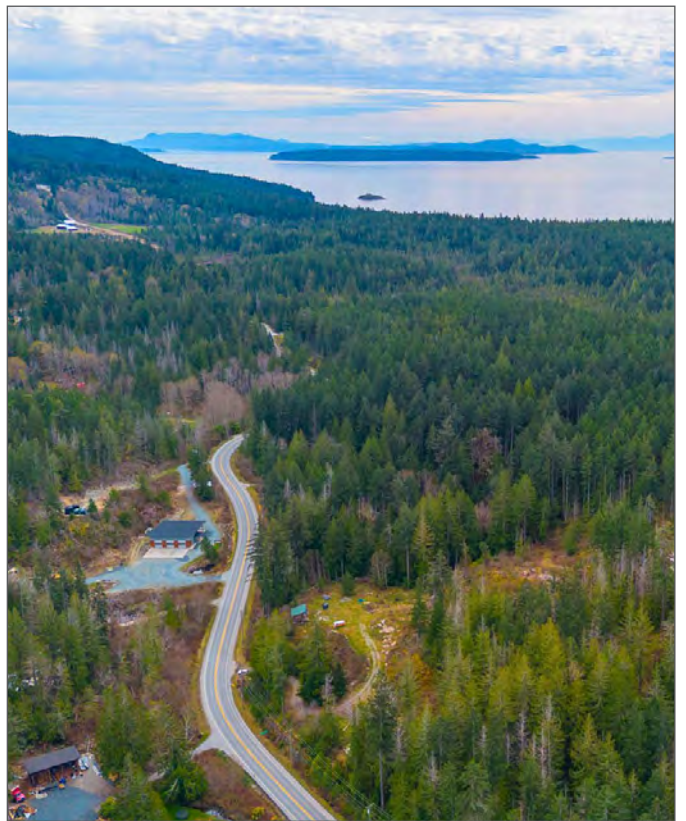


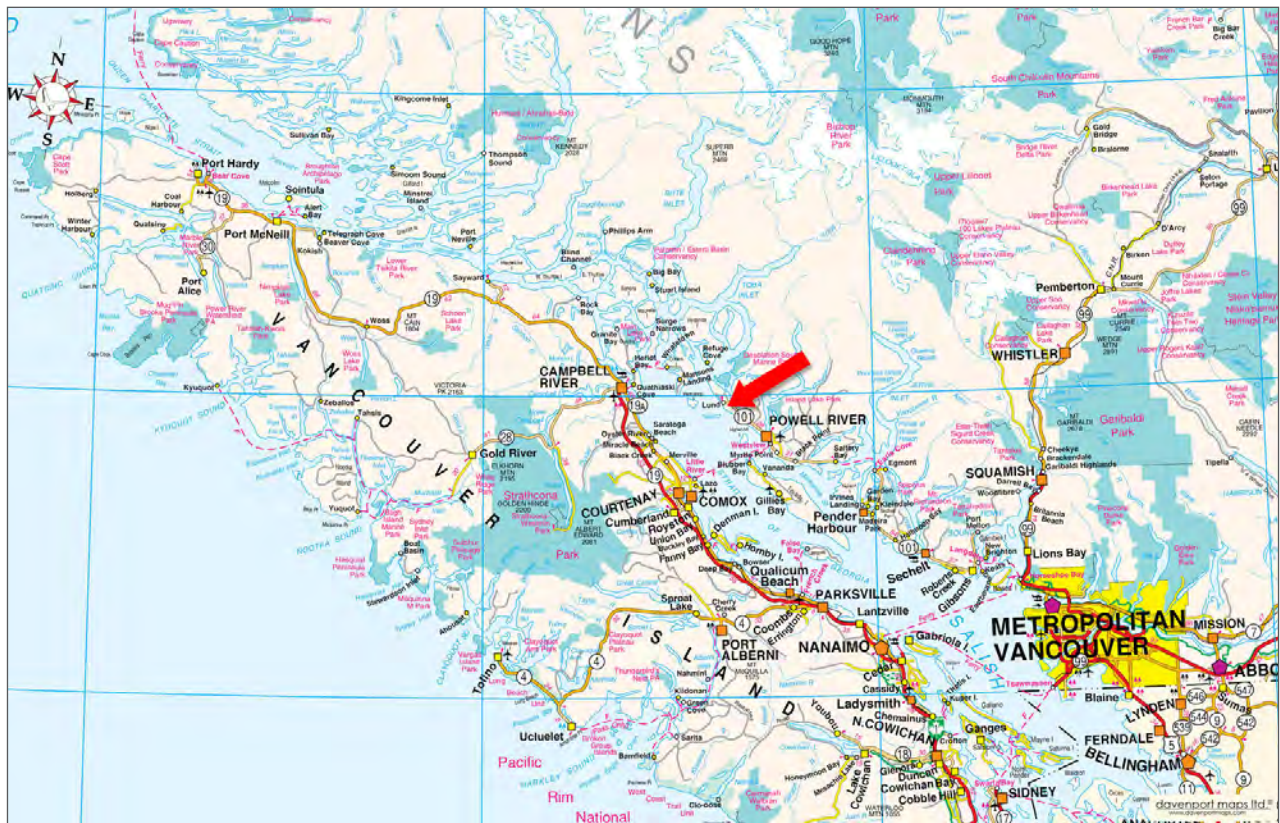
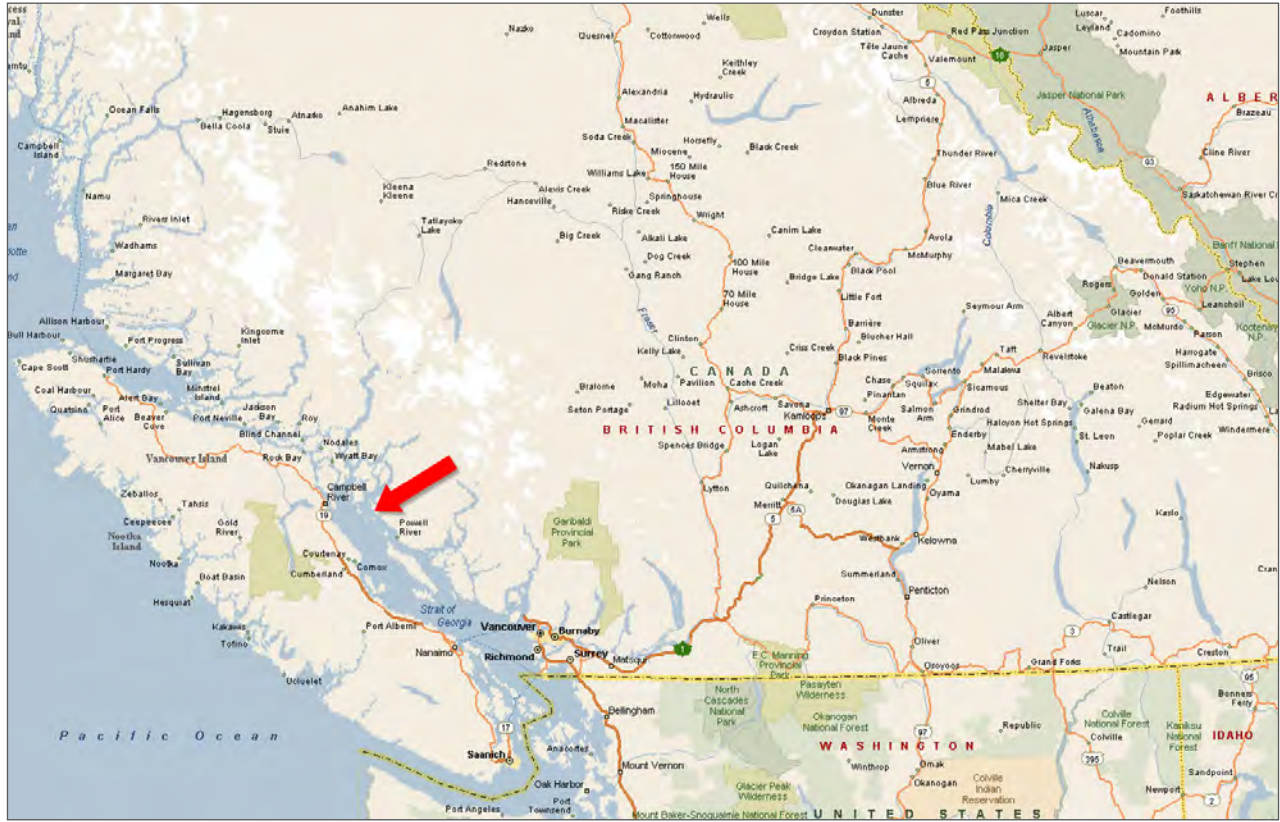


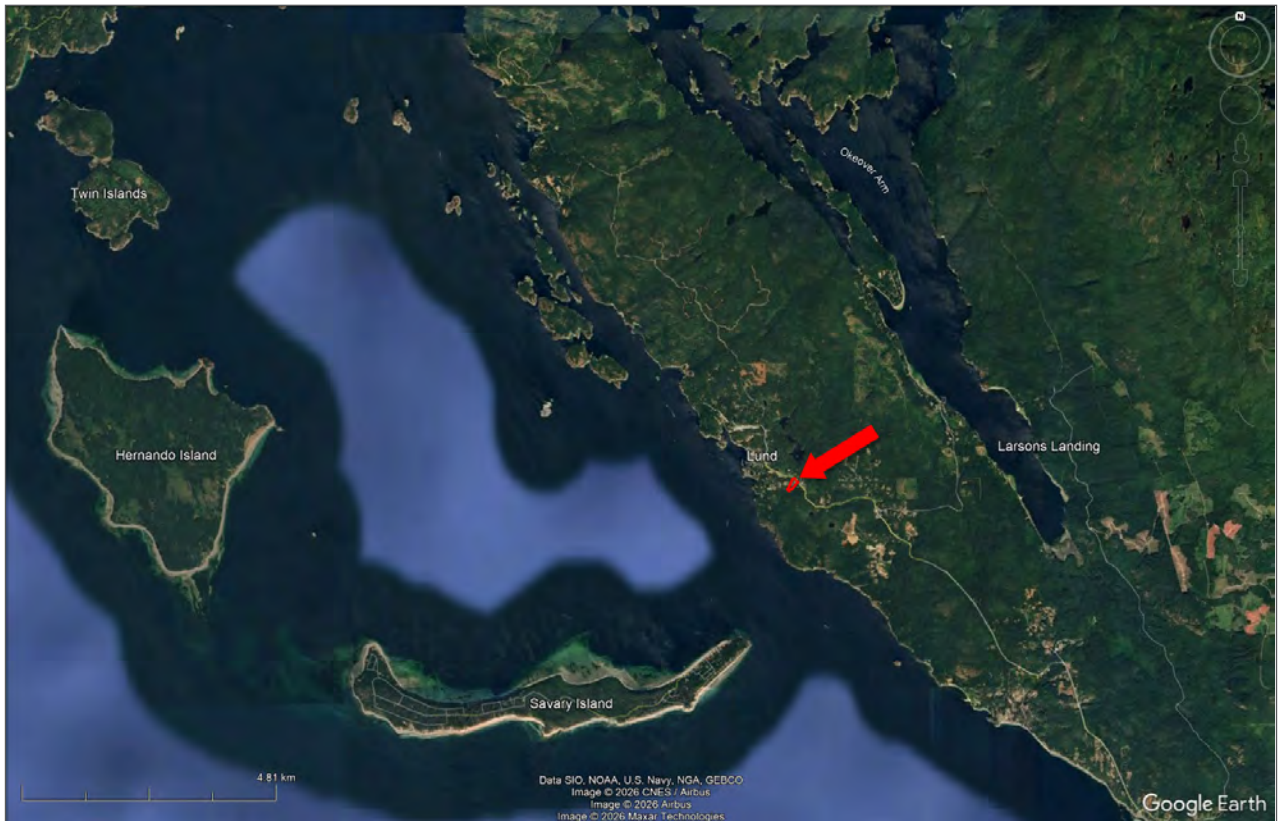


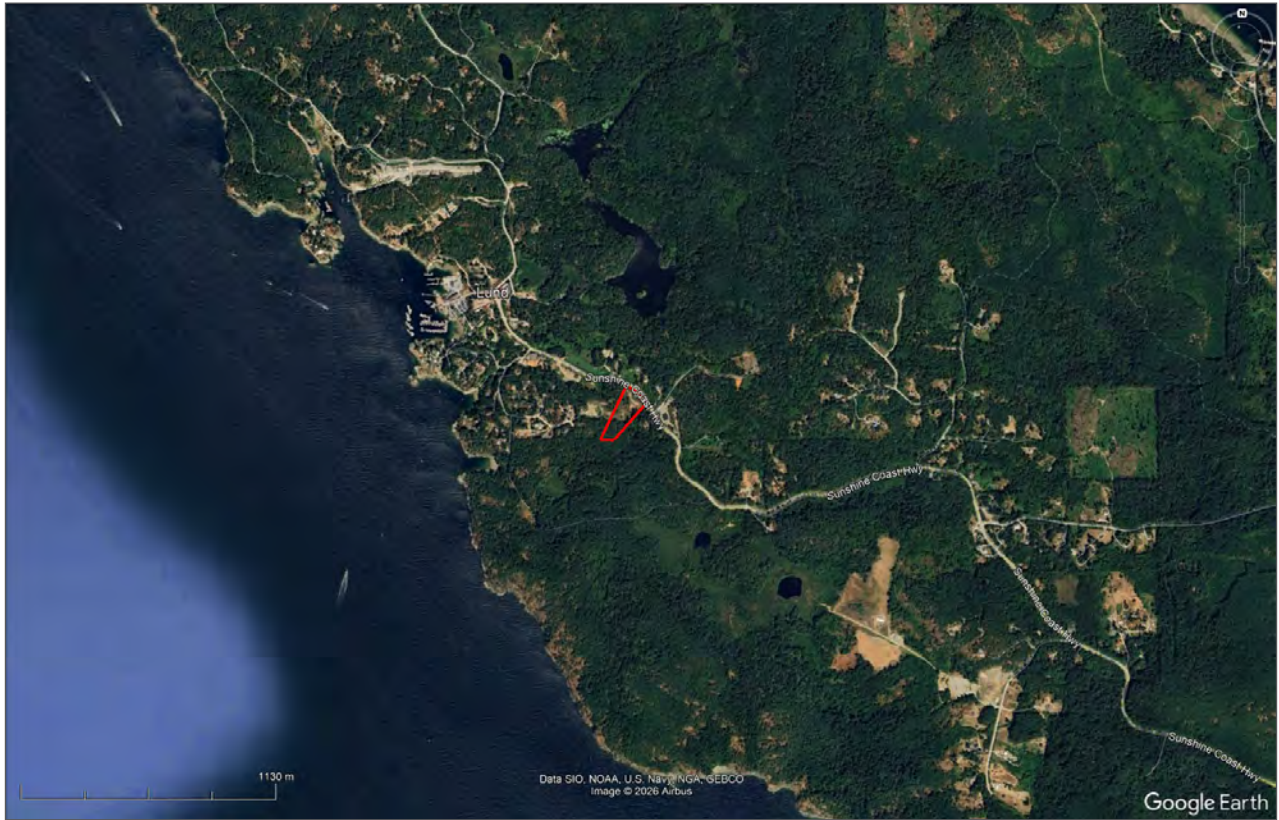


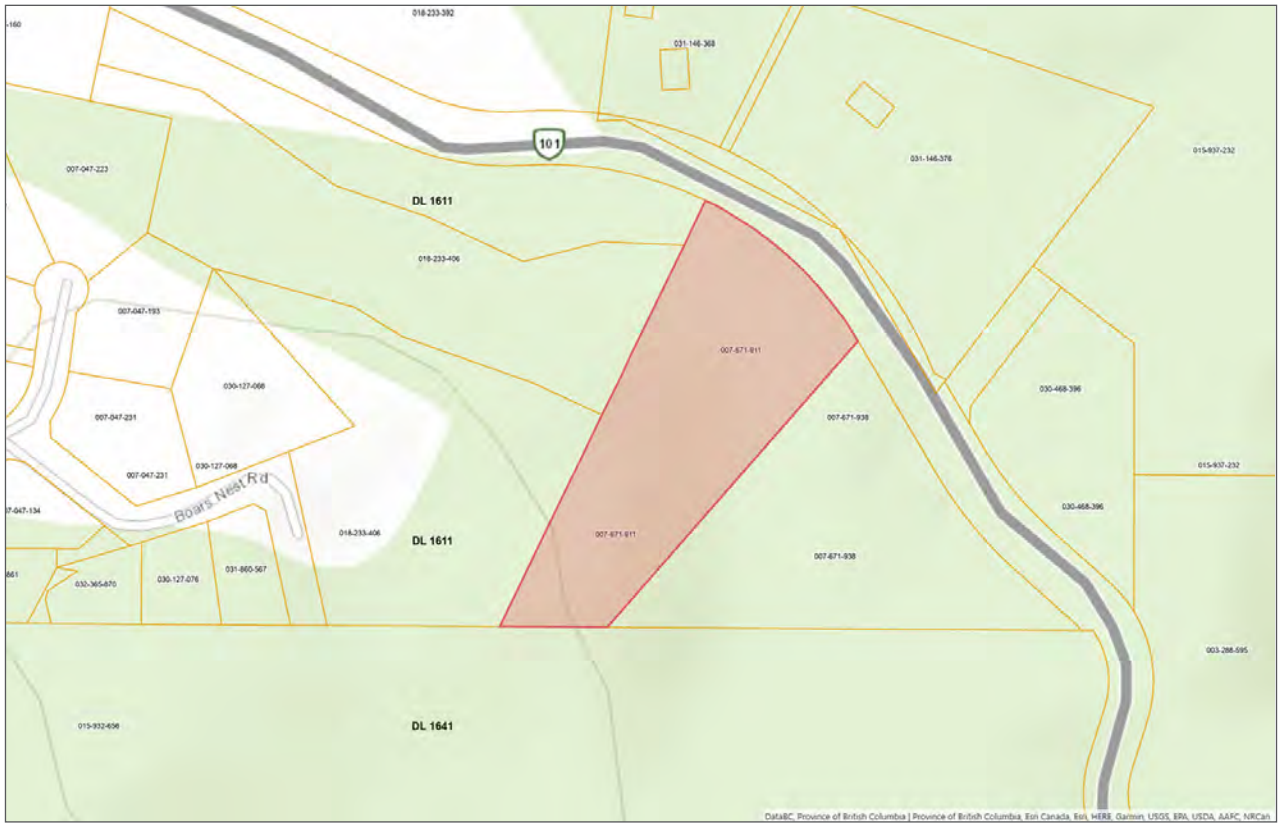
















Your Land. Your Legacy. Our Expertise.



[www.landquest.com](http://www.landquest.com)



**Jamie Zroback**

BC Landpro Group  
jamie@landquest.com  
1 (604) 483-1605



**Wyatt Hansen**

Representative  
wyatt@landquest.com  
(250) 207-6929



**Jason Zroback**

BC Landpro Group  
jason@landquest.com  
1 (604) 414-5577

---

LandQuest® Realty Corporation  
101 - 313 Sixth Street  
New Westminster, BC V3L 3A7

Phone: (604) 664-7630 Fax: (604) 516-6504  
Toll Free: 1-866-558-5263 (LAND)