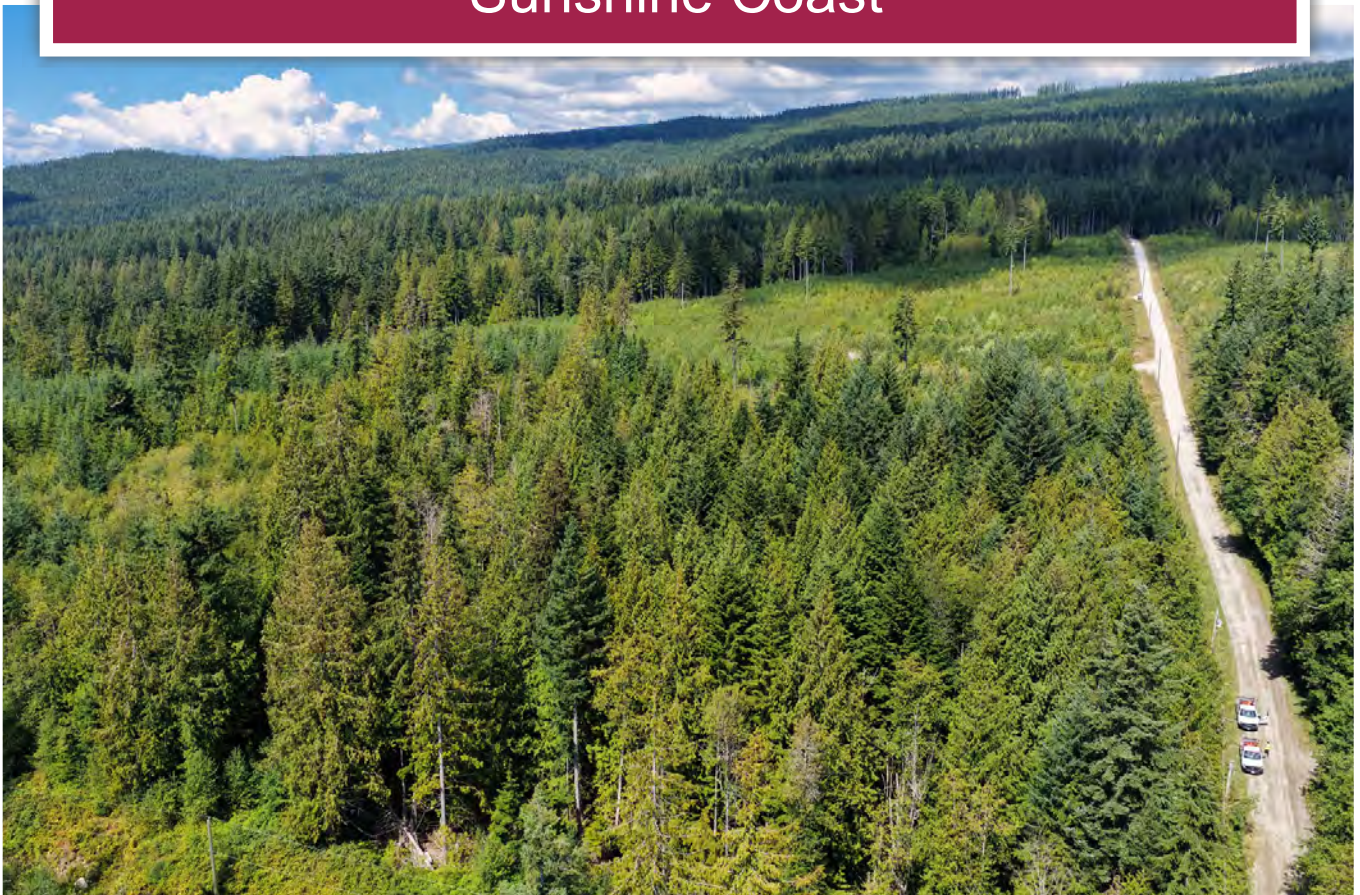




**19.86 Acres in Roberts Creek**  
Sunshine Coast



Jason Zroback  
BC Landpro Group  
[jason@landquest.com](mailto:jason@landquest.com)  
1 (604) 414-5577

Jamie Zroback  
BC Landpro Group  
[jamie@landquest.com](mailto:jamie@landquest.com)  
1 (604) 483-1605



Marketing British Columbia to the World®



“The Source” for Oceanfront, Lakefront,  
Islands, Ranches, Resorts & Land  
in British Columbia

[www.landquest.com](http://www.landquest.com)

# 19.86 Acres in Roberts Creek

## Sunshine Coast

### PROPERTY DETAILS

<b>Listing Number:</b>	25232
<b>Price:</b>	\$799,800
<b>Size:</b>	19.86 acres

### DESCRIPTION

Discover tranquility and space on this nearly 20-acre parcel tucked along quiet Lockyer Road. Offering potential ocean views, this gently sloping, forested property is zoned RF1, supporting a single-family home with a suite and forest management uses. It's an ideal canvas for those seeking privacy, hobby farming, or off-grid living. In close proximity to Crown land and integrated into the local trail network, it's a dream for hikers, equestrians, and nature lovers. Located in the rural heart of Roberts Creek, this property is only minutes from modern amenities and offers a rare opportunity to build your coastal legacy within easy reach of the city.

The property is a corner lot with significant road frontage on both Lockyer and Crystal roads. The property features a good stand of mature forest along Crystal Road and extending approximately a third of the way along Lockyer Road. The balance is a growing immature forest that was planted a few years ago and the trees are roughly 6 to 8 feet in height today.

The land has a gentle topography and is entirely usable to be developed into your intended use. The aspect is west facing and has excellent sun exposure.

Additionally, the property has a drilled well and power to the property line. Access is approximately 3 km up Lockyer Road off Highway 101.

### LOCATION

Roberts Creek, BC

### DIRECTIONS

Contact the listing agent.

### AREA DATA

Roberts Creek (xwesam/Stelk'áya) is a small residential community of about 3,553 people located between Gibsons and Sechelt on the southern Sunshine Coast in British Columbia. It is a short drive from both Gibsons and Sechelt, making it a quick trip for anyone visiting the Sunshine Coast or a convenient day trip from Vancouver.

It is known for its 9 km of shoreline, much of which includes sandy swimming beaches, and the Roberts Creek Mandala which is re-painted each year by 300 residents and visitors. The Roberts Creek community is centered around small shops and restaurants which provide a distinct village ambiance. The Roberts Creek Community Hall, a popular venue for dances, meetings and other events, was built in 1934 and is owned, operated and maintained by the community.

The area includes a paved bike path that runs parallel to the highway; a golf course, Cliff Gilker Park, a family-oriented hiking area.





Roberts Creek is also the location for several important regional amenities including Dakota Ridge, a winter recreation area offering 12 km of groomed snowshoe and cross-country ski trails, the “Sechelt” landfill, the Sunshine Coast Regional District’s water intake and the Seaview Cemetery.

### VEGETATION

Mature and immature forest.

### RECREATION

Hiking, mountain biking, cycling, paddling, boating, fishing, rock climbing, swimming, scuba diving, golfing and snowshoeing.

### MAP REFERENCE

49°27’5.68”N and 123°38’35.80”W

### BOUNDARIES

Please see mapping section, all boundaries are approximate.

### SERVICES

Drilled well, power to property line.

### IMPROVEMENTS

Some roughed in roads.

### TAXES

\$248.88 (2025) - Managed Forests

### ZONING

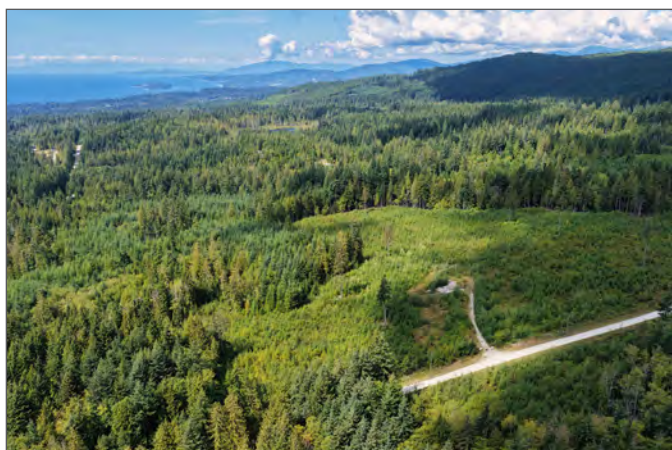
RF1 (Rural Forest One)  
Sunshine Coast Regional District Zoning Bylaw No. 722

Additional zoning information can be found on the Sunshine Coast Regional District website, <https://www.scrd.ca/zoning-bylaws/>

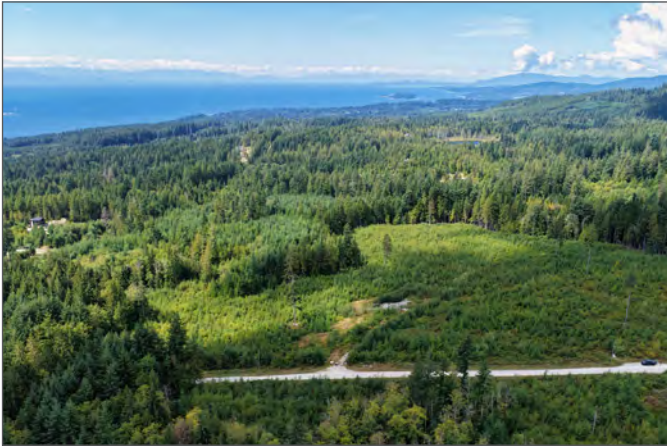
### LEGAL

Block 5 District Lot 1733 Plan 4370  
PID 011-587-369

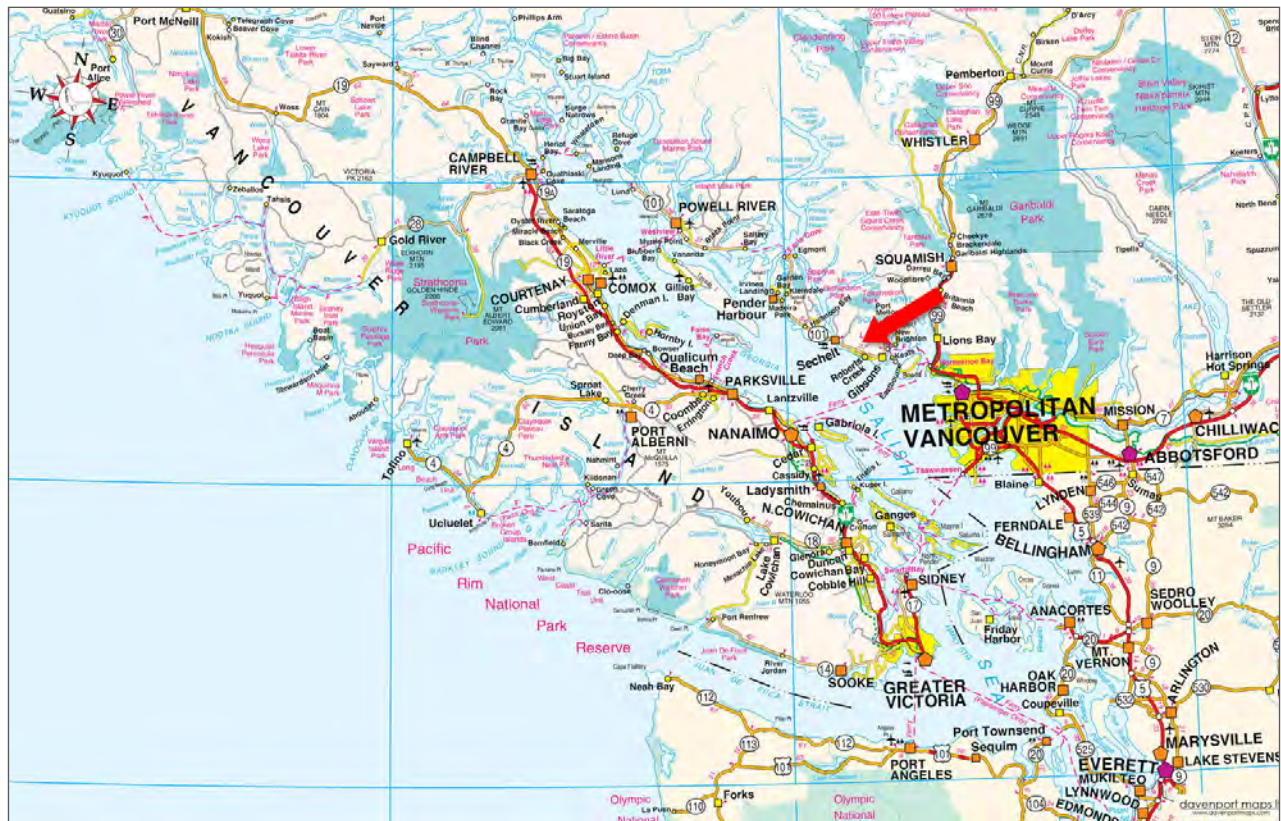
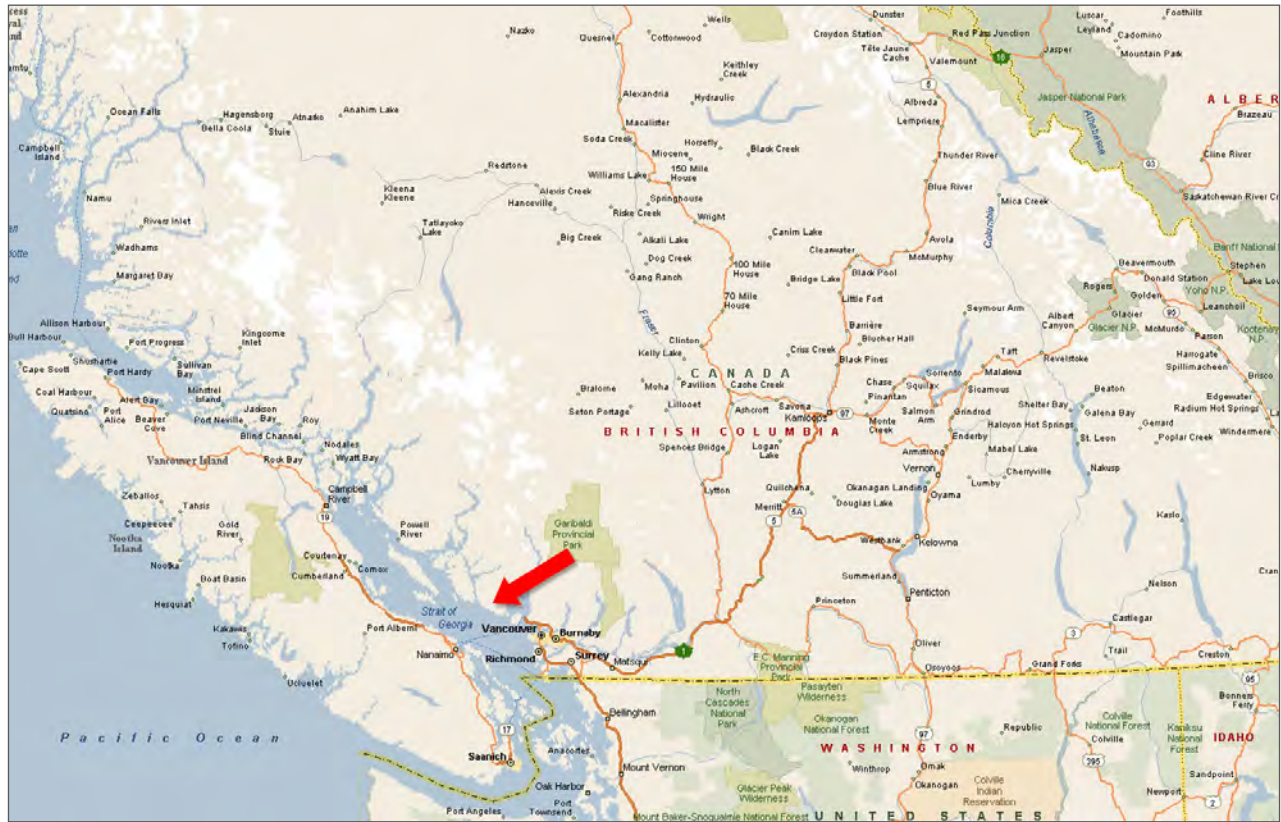




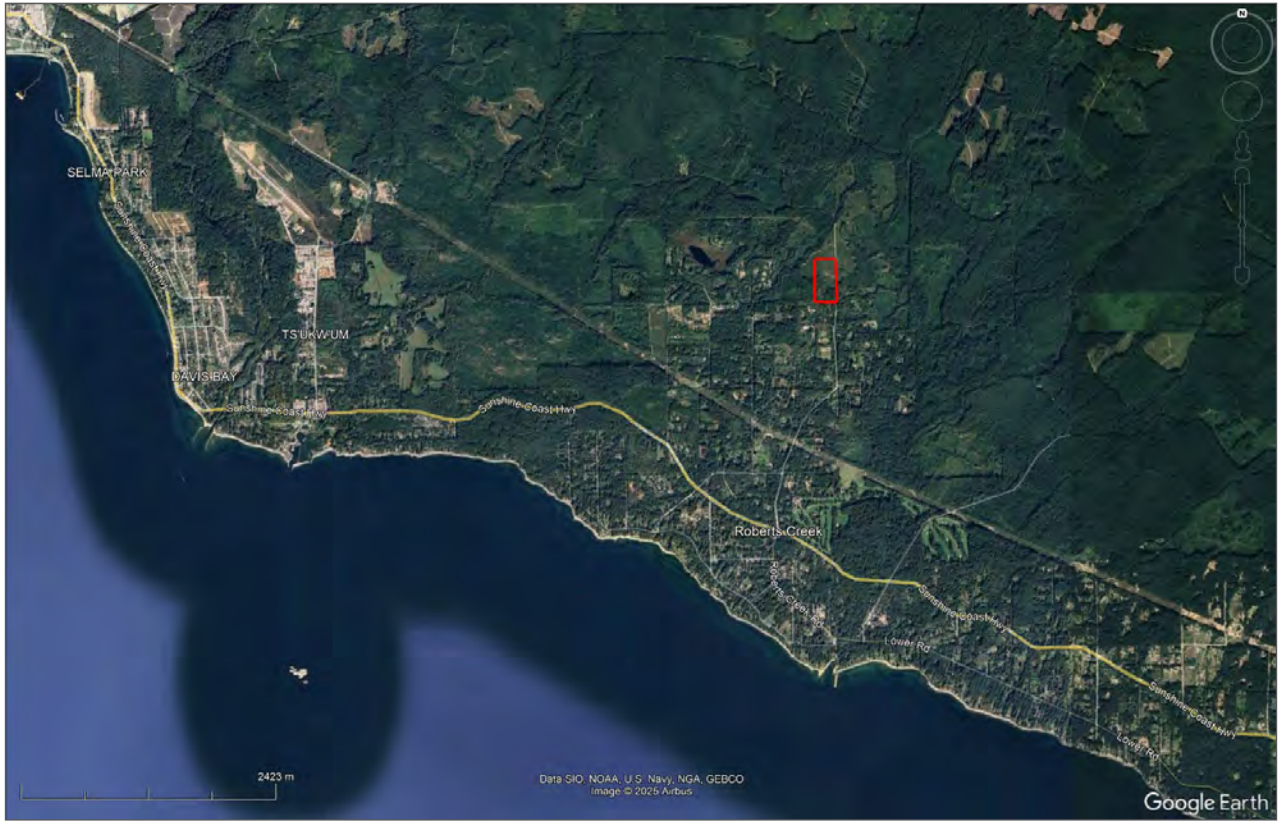


















**CAUTION AND DISCLAIMER:** The information contained on this map is provided by Escondido Real Estate Systems and Affiliates Forest Management Corporation, timberland manager for its affiliates (and Timberlands and Timberland), and is provided "as is," exclusive of all representations, warranties, obligations, and liabilities, whether express or implied, to the maximum extent permitted by law. Mosby Forest Management is not liable for any errors or omissions, and will

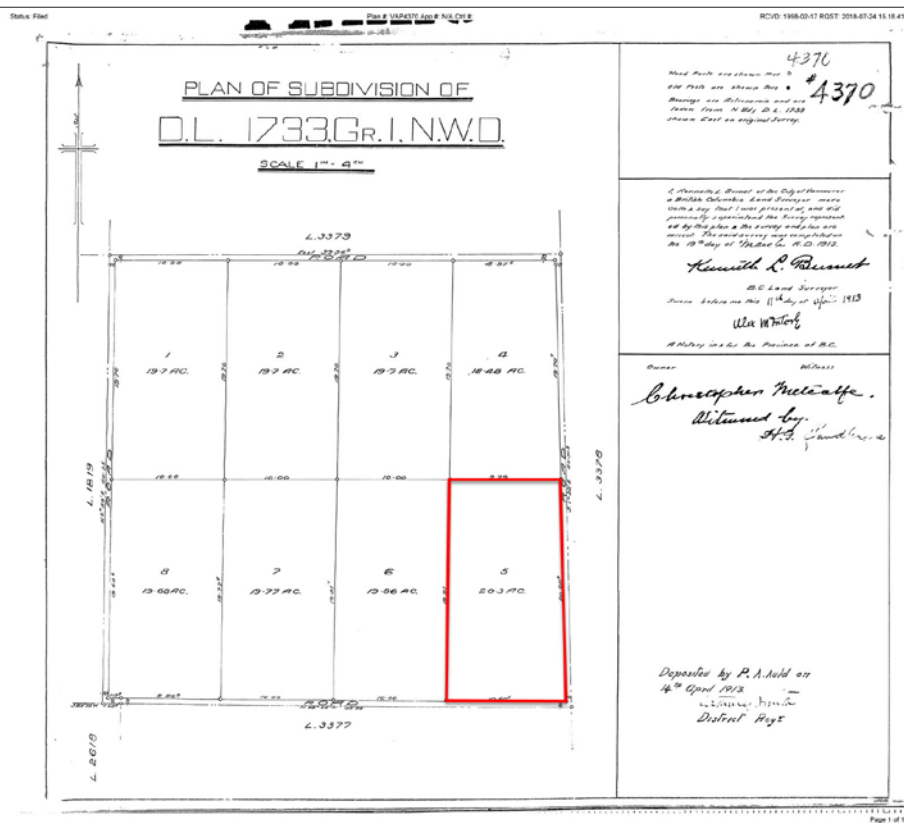
toll under any circumstances be liable for any direct, indirect, special, incidental, consequential, or other loss, injury or damage caused by its use or otherwise arising in connection with this map, even if specifically advised of the possibility of such loss, injury or damage. This map is not designed for navigation use, may be generalized, not reflect actual conditions, and unnamed or unnamed hazards may exist.

**NO REPRODUCTION:**  
This map may not be reproduced or redistributed without the prior written permission of Missouri Forest Management Corporation, Timberland manager for Island Timberlands and Timberland.

**INQUIRIES:**  
Inquiries relating to this map should be directed to Missouri Forest Management, [www.missouriforest.com](http://www.missouriforest.com), [info@missouriforest.com](mailto:info@missouriforest.com).

**Credits:**  
This map may contain information licensed under the Open Government License - Brazil Columbia  
<http://www2.gov.br/gov.br/portal/abertura/abertura.html>  
Open Government License for  
and the Open Government License - Canada  
<http://open.canada.ca/en/open-government-licence-canada>

## Couverdon





The image shows a dense, green forest covering a hillside. A dirt road or path is visible on the right side, winding through the trees. The background is slightly hazy, suggesting a misty or overcast day. Overlaid on the top half of the image are horizontal lines for writing notes. The word "Notes" is written in a large, dark red font at the top left.





Marketing British Columbia to the World®



[www.landquest.com](http://www.landquest.com)



**Jason Zroback**

BC Landpro Group  
jason@landquest.com  
1 (604) 414-5577



**Jamie Zroback**

BC Landpro Group  
jamie@landquest.com  
1 (604) 483-1605

---

LandQuest® Realty Corporation  
101 - 313 Sixth Street  
New Westminster, BC V3L 3A7

Phone: (604) 664-7630 Fax: (604) 516-6504  
Toll Free: 1-866-558-5263 (LAND)

Our property descriptions and geographical information are taken from the BC Assessment Authority, Land Titles Office, government maps and other sources. While LandQuest® does not guarantee the information, we believe it to be accurate, but should not be relied upon without verification. This communication is not intended to cause or induce breach of an existing agency agreement. This property is listed on the MLS®. The trademarks MLS®, Multiple Listing Service® and the associated logos are owned by The Canadian Real Estate Association (CREA) and identify the quality of services provided by real estate professionals who are members of CREA.