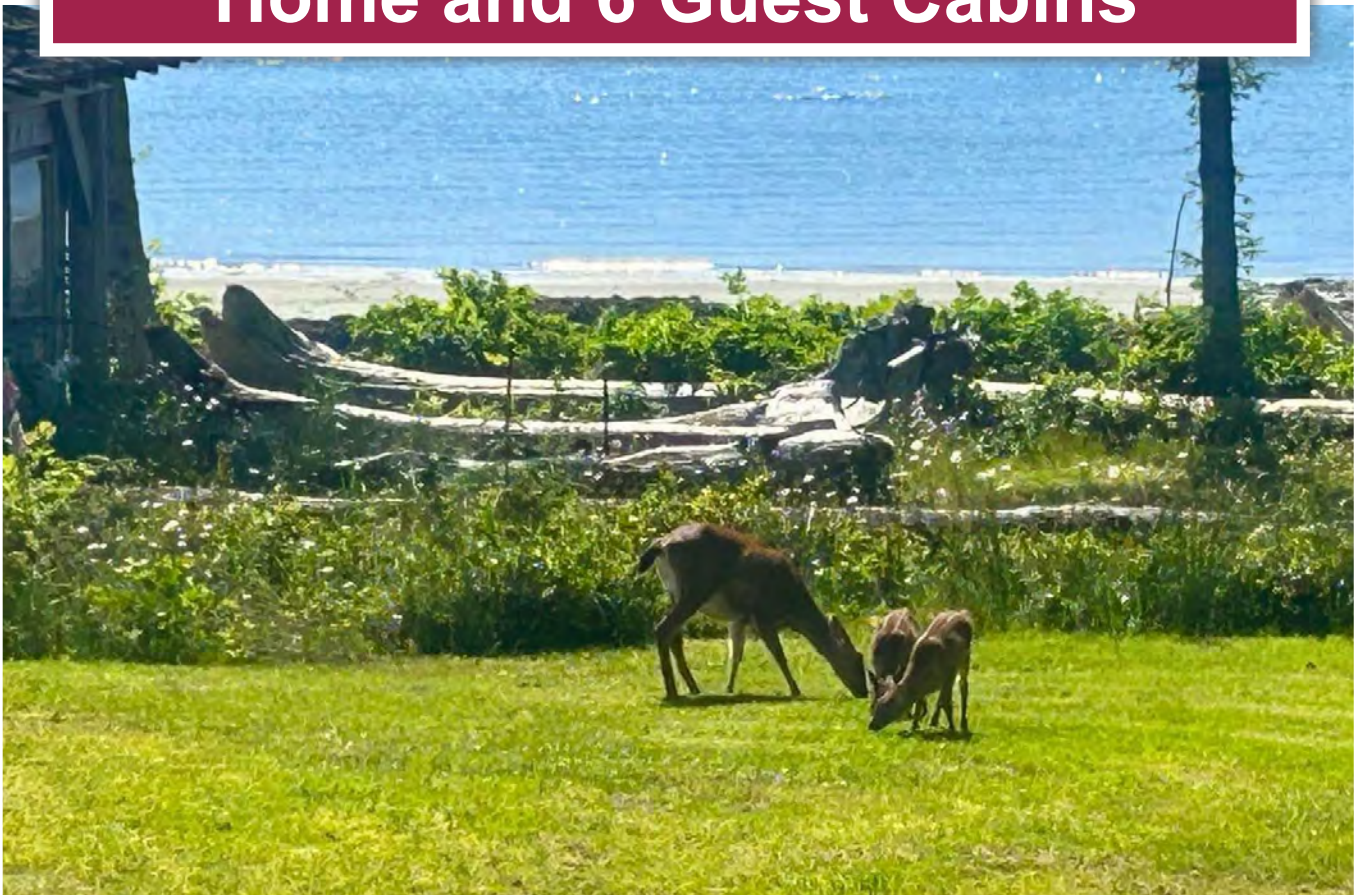




144-Acre Oceanfront with Main Home and 6 Guest Cabins



Jamie Zroback
BC Landpro Group
jamie@landquest.com
1 (604) 483-1605

Sandy Sleath
sandy@landquest.com
(604) 413-0615

Jason Zroback
BC Landpro Group
jason@landquest.com
1 (604) 414-5577



Your Land. Your Legacy. Our Expertise.



“The Source” for Oceanfront, Lakefront,
Islands, Ranches, Resorts & Land
in British Columbia

www.landquest.com

144-Acre Oceanfront with Main Home and 6 Guest Cabins - Porcher Island

PROPERTY DETAILS

Listing Number:	26023
Price:	\$949,000
Taxes (2025):	\$993.57

SIZE

144 acres ~ 1,500± ft oceanfront

DESCRIPTION

Located in the Oona River area on Porcher Island, this 144-acre oceanfront property offers approximately 1,500 ft of southern-exposed frontage. The property includes a main residence, six guest cabins, a shop, and a boat house, with established infrastructure in place. A rare large-acreage holding with scale, privacy, and functional improvements in a serviced coastal setting. Property features include:

Main Home

The 1,486 square foot main home is equipped with a heat pump, providing both comfort and energy efficiency. Enjoy breathtaking views of the ocean and surrounding landscape from the comfort of your own living space.

Six Guest Cabins

Generate revenue and provide a comfortable retreat for guests with six charming guest cabins. These cabins offer a cozy atmosphere and stunning views, ensuring an unforgettable experience for visitors.

Shop and Boat House

The property features a 27 x 57 ft shop and a 42 x 22 ft boat house, providing ample space for storage, workspace, and shelter for your watercraft and equipment.

Included Additional Items

This offering includes two excavators, backhoe, a 1-ton dump truck, ¾ ton truck, 2 portable sawmills, various tools, 16 ft skiff, outboards and much more.

Essential Services

The property is fully serviced with power, a septic system, and gravity-fed water. Furthermore, the presence of cell service ensures you can stay connected even in this secluded coastal paradise.

Revenue Potential

Take advantage of the thriving fishing opportunities in the area and capitalize on the revenue potential from renting out the cabins to fishermen. With spectacular salmon, halibut, cod, and crab fishing at your doorstep, this property offers an excellent income-generating opportunity.

Seaside Community

Oona River is a beautiful seaside community with a rich history, located on the eastern side of Porcher Island, just south of Prince Rupert. Access to this idyllic location is available via ferry, float plane, or charter launch, ensuring a sense of seclusion while maintaining convenient connectivity.

Versatile Possibilities

Whether you're seeking a serene west coast getaway, a thriving fishing lodge, a charming bed and breakfast, or a permanent year-round

residence integrated into the vibrant community, this property caters to a variety of lifestyle options.

This is a large, well-established oceanfront holding in the Oona River area of Porcher Island, offering scale, privacy, and existing improvements in a serviced coastal community. With southern exposure, multiple dwellings, outbuildings, and on-site infrastructure, the property supports a range of recreational, family, or accommodation uses and is accessible by ferry, float plane, or boat charter. Make your appointment to view today!

LOCATION

DL 2200, close to Oona River on Porcher Island

DIRECTIONS

Access to Oona River is either by ferry, float plane or boat charter. There is road access from the community harbour to the property.

AREA DATA

Porcher Island

Porcher Island is one of British Columbia's largest coastal islands, located about 42 km south of Prince Rupert in the Skeena region. The Oona River flows into Ogden Channel and is surrounded by rugged island terrain, inlets, and forested lowlands. Porcher Island and the area that surrounds it features some of the best salmon fishing the world has to offer. In the protected bay just off the property you can find Dungeness crab in abundance, and deeper out you can catch spot prawns, and bottom fish like ling cod and rock cod. Around to the west side of the island you will find deeper water that will produce pacific halibut.

Oona River

The small settlement at Oona River has a longstanding maritime and resource-based character, originally established by Scandinavian homesteaders in the early 20th century and historically linked to fishing, boat building, and logging. Oona River remains one of the few surviving communities on Porcher Island and supports eco-tourism, and outdoor recreation, with access mainly by boat or float plane. Wildlife is rich around the estuary and coastal waters, with seabirds, waterfowl, and marine life in the channels and tidal flats, and the surrounding waters and shoreline provide opportunities for boating, kayaking, and nature observation in a largely undeveloped, natural coastal environment.

VEGETATION

The vegetation around the Oona River on Porcher Island is characteristic of British Columbia's north coast coastal temperate rainforest, dense, lush, and shaped by high rainfall and mild coastal temperatures. The forests are dominated by western red cedar, Sitka spruce, western hemlock, and yellow cedar, with mature stands often mixed with second-growth areas from historic logging. These trees grow tall and closely spaced, creating a shaded forest floor rich in mosses and lichens.

Along the riverbanks and estuary, vegetation shifts to riparian species such as alder, willow, cottonwood, and devil's club, which thrive in the moist soils. The understory is thick with salal, huckleberry, salmonberry, ferns, and skunk cabbage, especially in low-lying or boggy areas. Near the shoreline and tidal flats, grasses, sedges, and salt-tolerant plants appear, transitioning into estuarine marsh vegetation that supports fish habitat and bird life. Overall, the area around Oona River is heavily forested, green year-round, and largely undeveloped, reflecting a healthy, intact coastal ecosystem.

RECREATION

Porcher Island offers quiet, remote outdoor experiences such as boating, kayaking, beachcombing, wildlife viewing, and sport fishing right from sheltered inlets and exposed coastline. The surrounding waters are well known for salmon, halibut, lingcod, and crab as mentioned before, while the estuaries and shoreline attract seabirds, eagles, seals, and occasionally whales. On land, informal hiking, foraging, and nature exploration are popular, with forested terrain and beaches providing a true off-grid coastal lifestyle.

Prince Rupert serves as the regional hub and expands recreational options significantly. The city is known as one of BC's top destinations for saltwater sport fishing, with easy access to deep-water channels and nearshore fishing grounds. Residents and visitors enjoy kayaking, sailing, scuba diving, and wildlife tours, as well as land-based activities such as hiking and mountain biking on nearby trails like Butze Rapids, Tall Trees, and Mount Hays. Cultural recreation is also prominent, with museums, Indigenous cultural sites, and festivals reflecting the area's rich heritage. Together, Porcher Island and Prince Rupert offer coastal adventure and accessible amenities, making the region attractive for both outdoor enthusiasts and those seeking a relaxed coastal lifestyle.

HISTORY

Porcher Island's history is rooted in long-standing Indigenous use and later maritime settlement along British Columbia's North Coast. For thousands of years, the island has been part of the traditional territory of the Tsimshian Nation, who used its sheltered bays, rivers, and coastal waters for fishing, hunting, and seasonal camps. Salmon streams such as the Oona River were vital food sources, and the surrounding waterways served as important travel and trade routes between coastal and inland communities.

European settlement began in the late 19th and early 20th centuries, largely tied to the growth of the commercial fishing and logging industries. Scandinavian settlers established homesteads and fishing communities on Porcher Island, with Oona River becoming one of the island's primary settlements. The community developed around boat building, net mending, and fishing support services for nearby coastal fisheries. While much of the island remained undeveloped, small-scale logging and subsistence activities supported local residents. Today, Porcher Island remains sparsely populated, with Oona River as its main community, reflecting a history shaped by self-reliance, maritime culture, and a strong connection to the land and sea.

MAP REFERENCE

53°56'2.32"N and 130°15'49.31"W

BOUNDARIES

Please see mapping section, all boundaries are approximate.

SERVICES

- Power
- Gravity-fed water
- Septic
- Cell service

ZONING

Rural Residential (Property is part of North Cast Regional District)

LEGAL

DISTRICT LOT 2200, RANGE 5, COAST RANGE 5 LAND DISTRICT

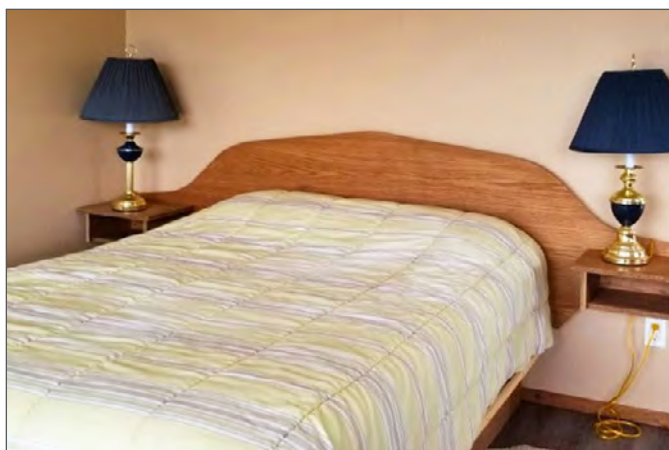
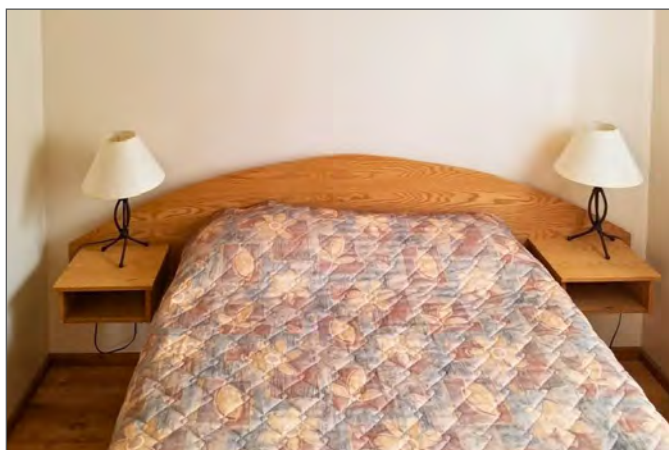
PID 015-130-274

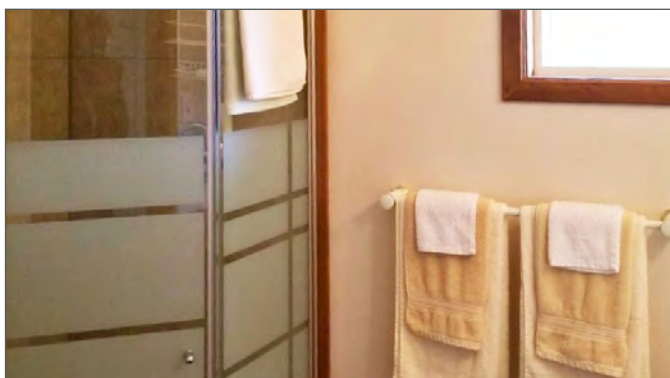
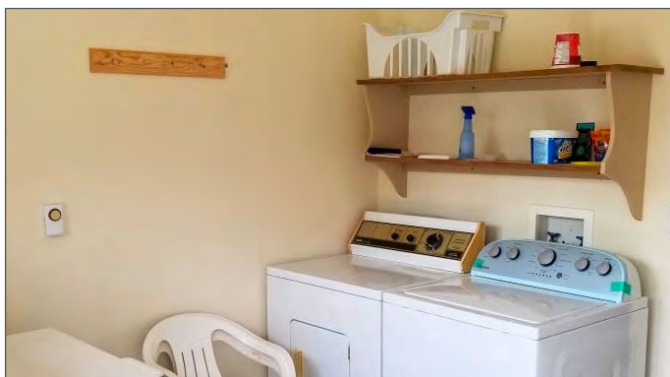




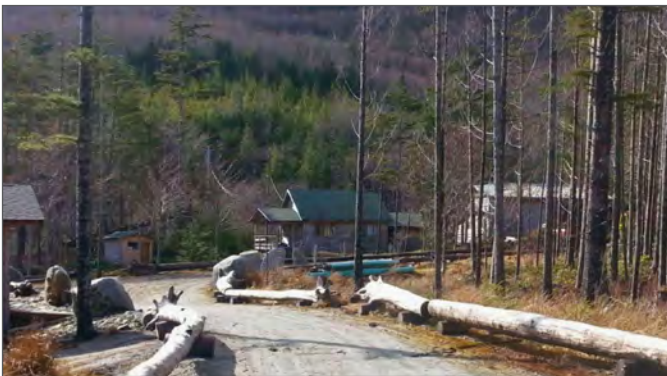


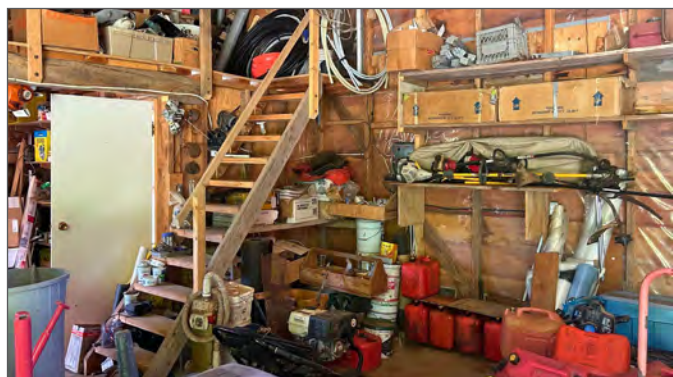
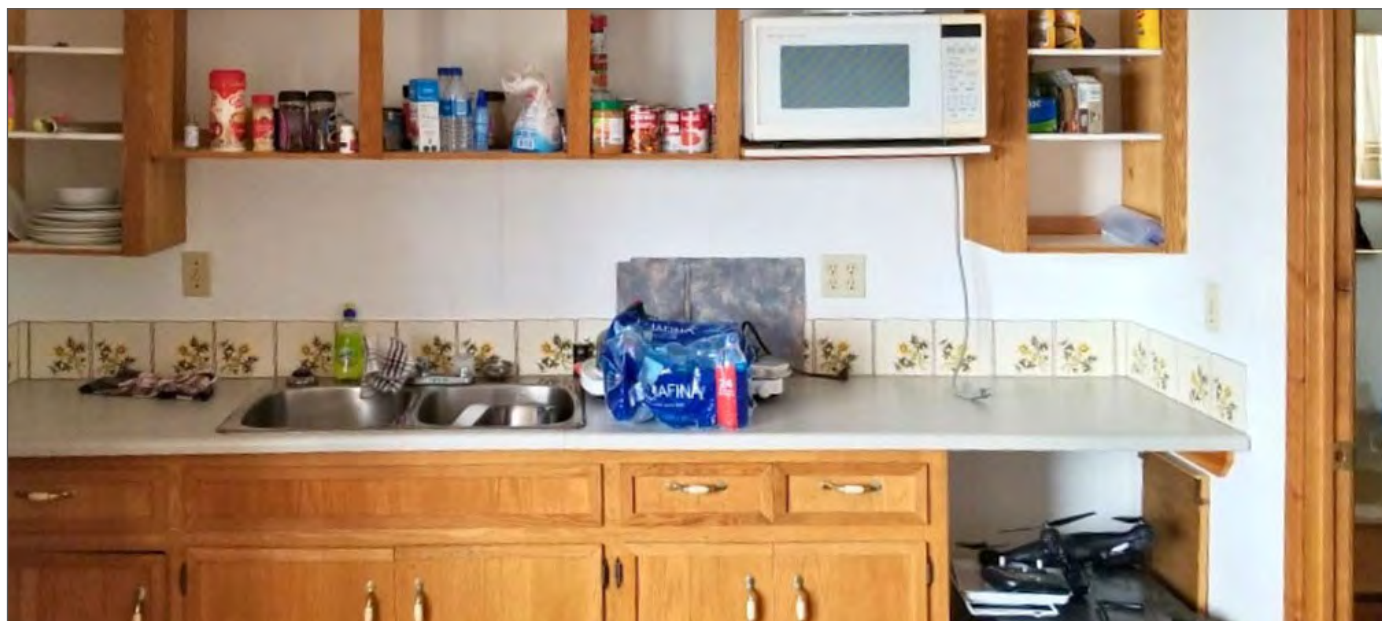


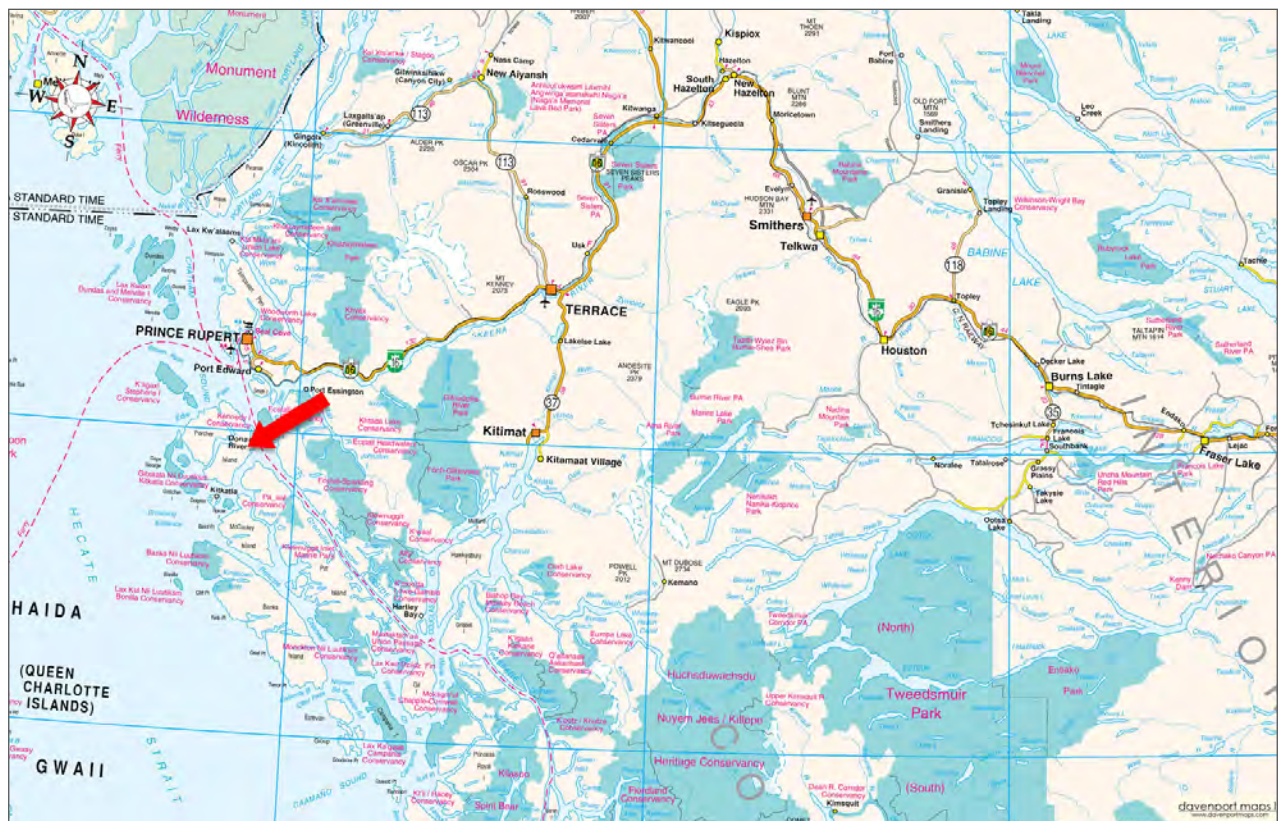
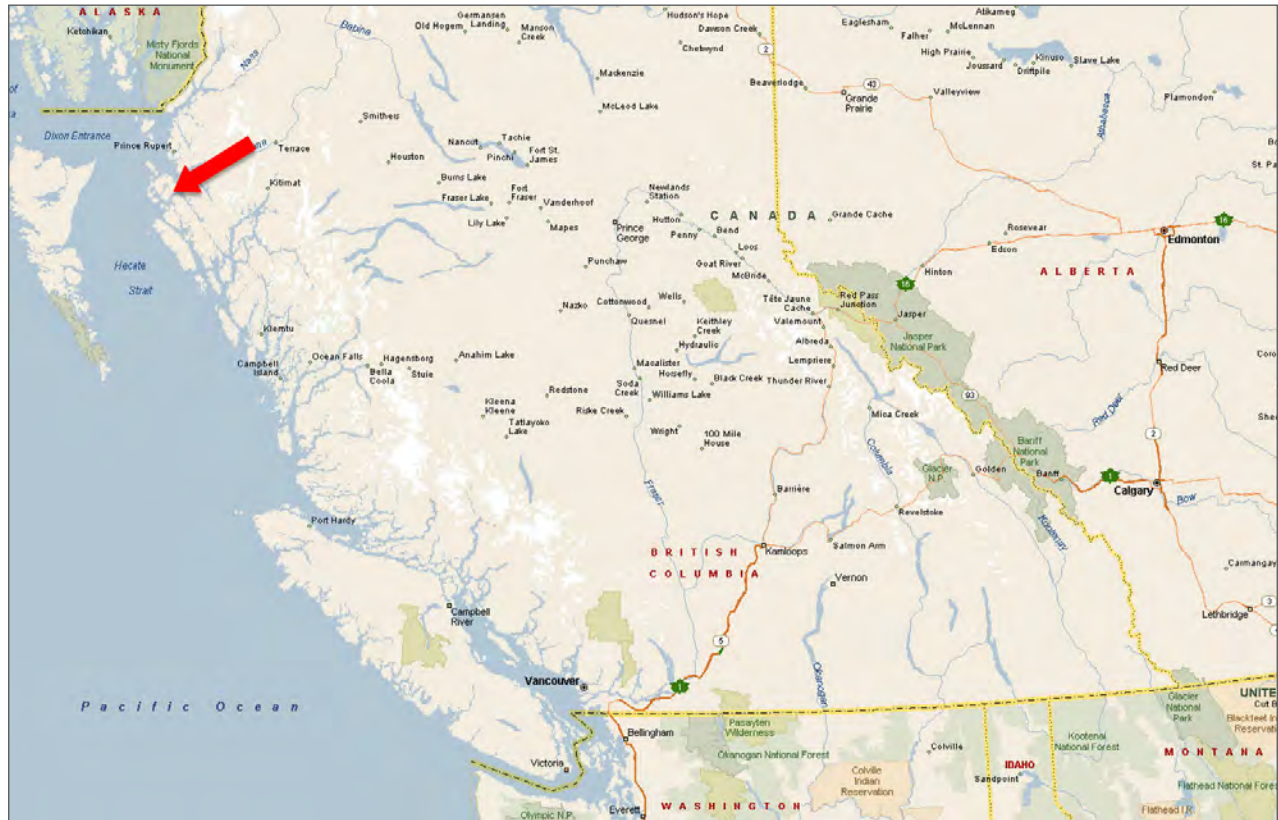


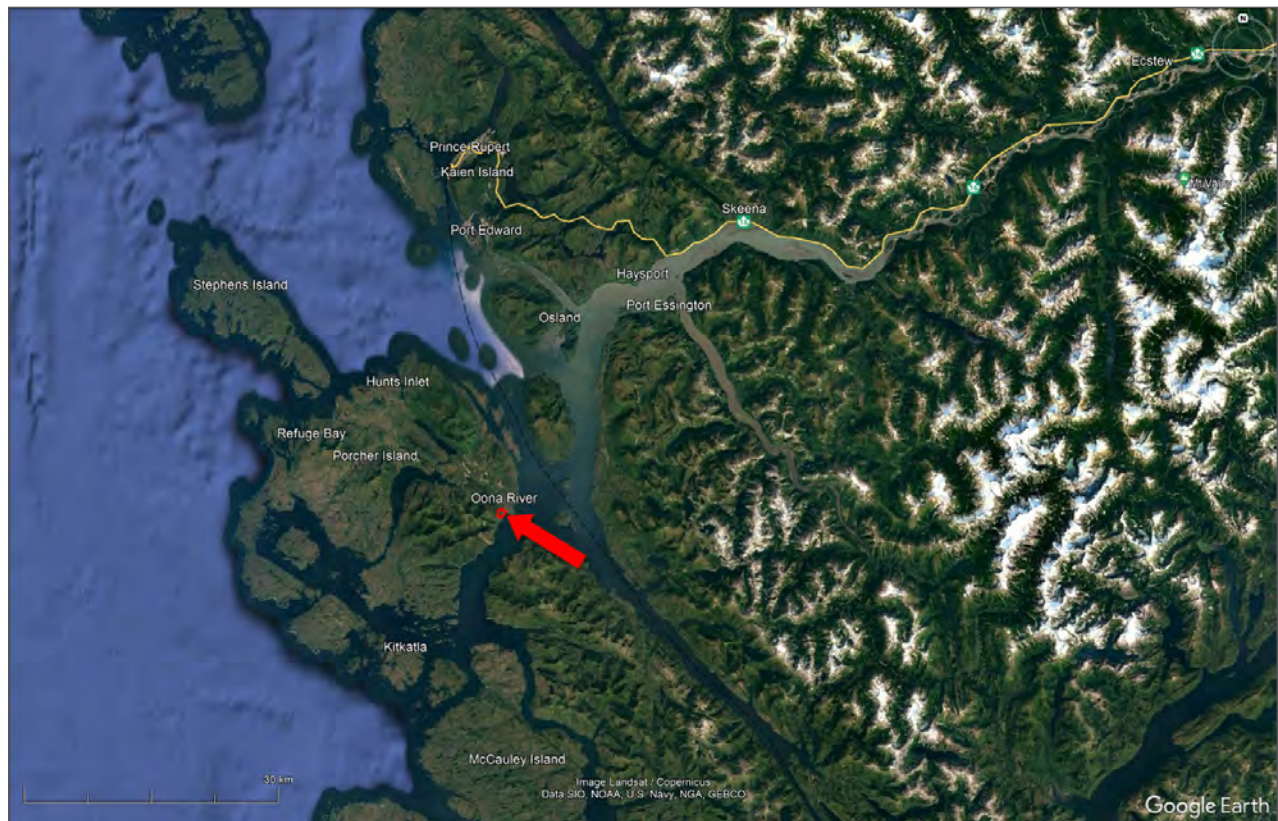


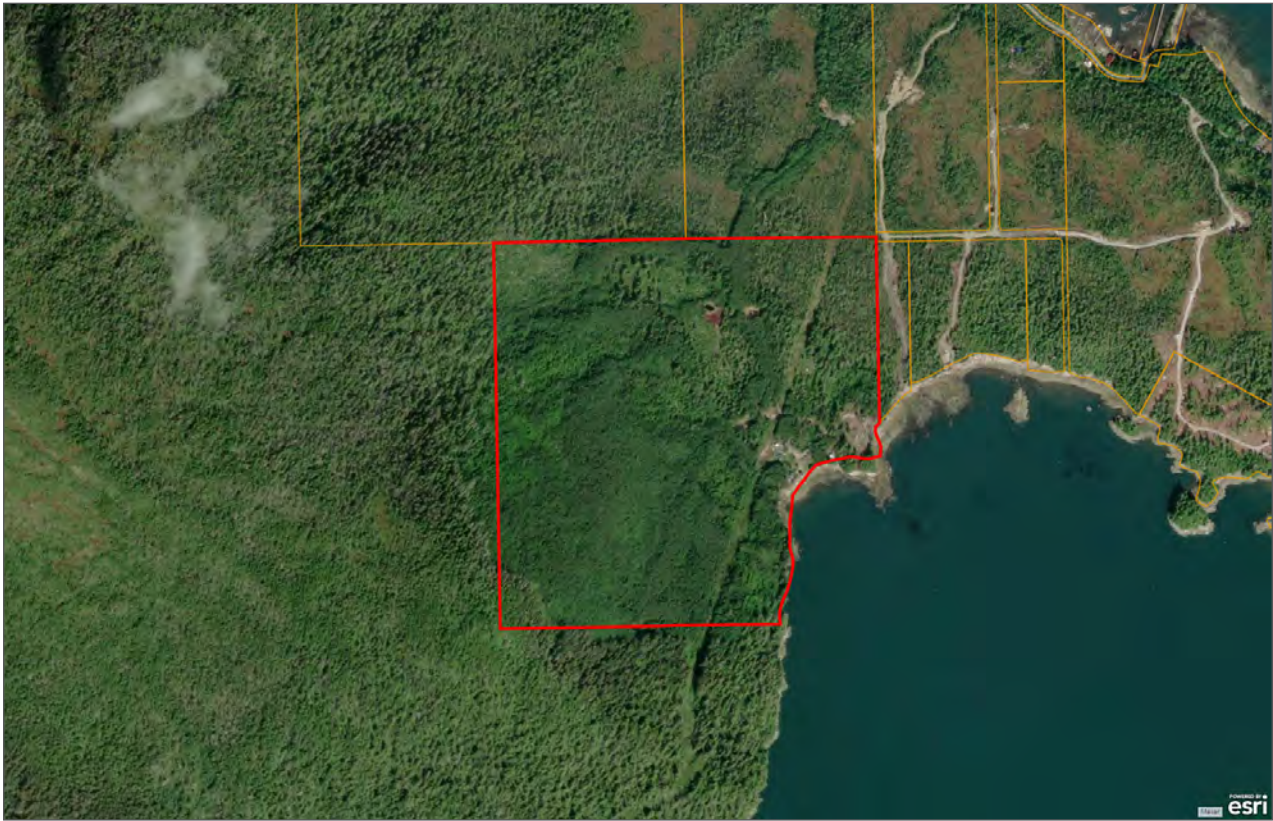
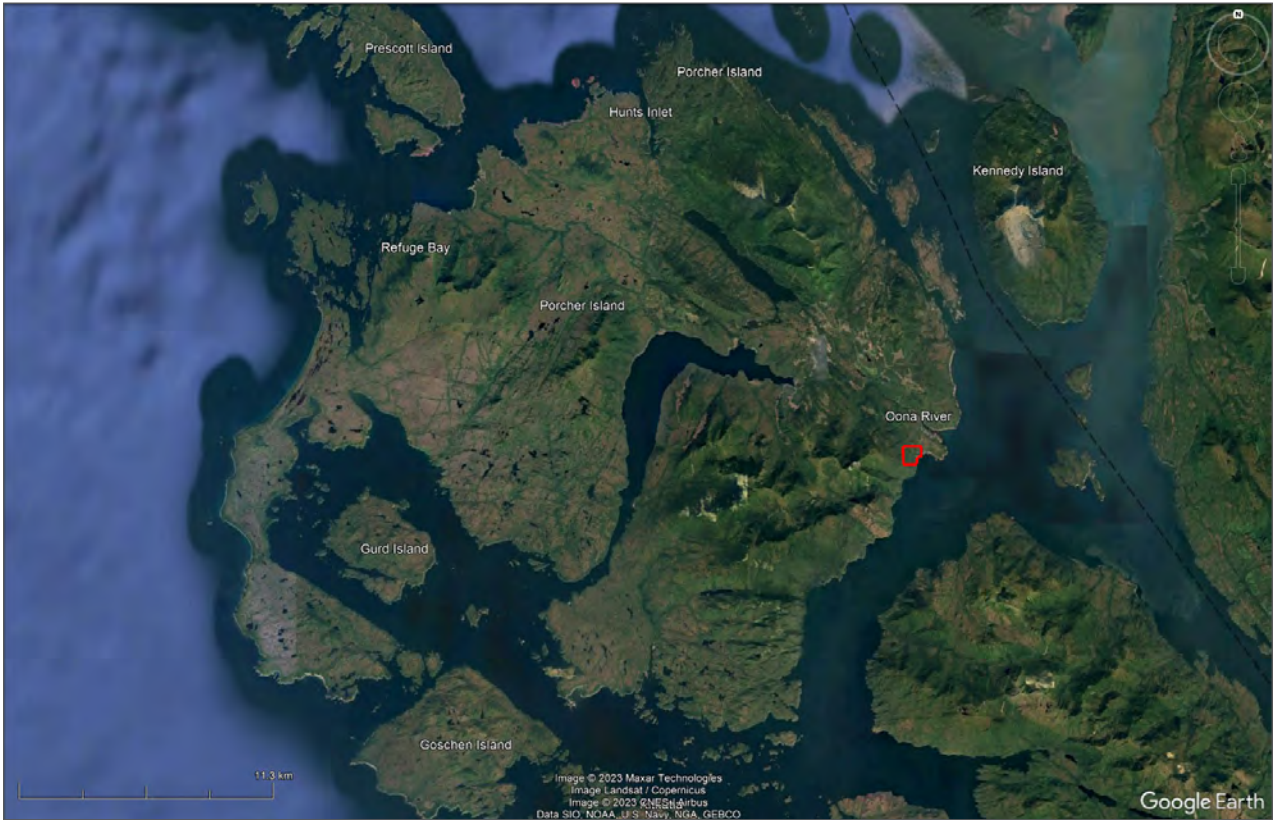


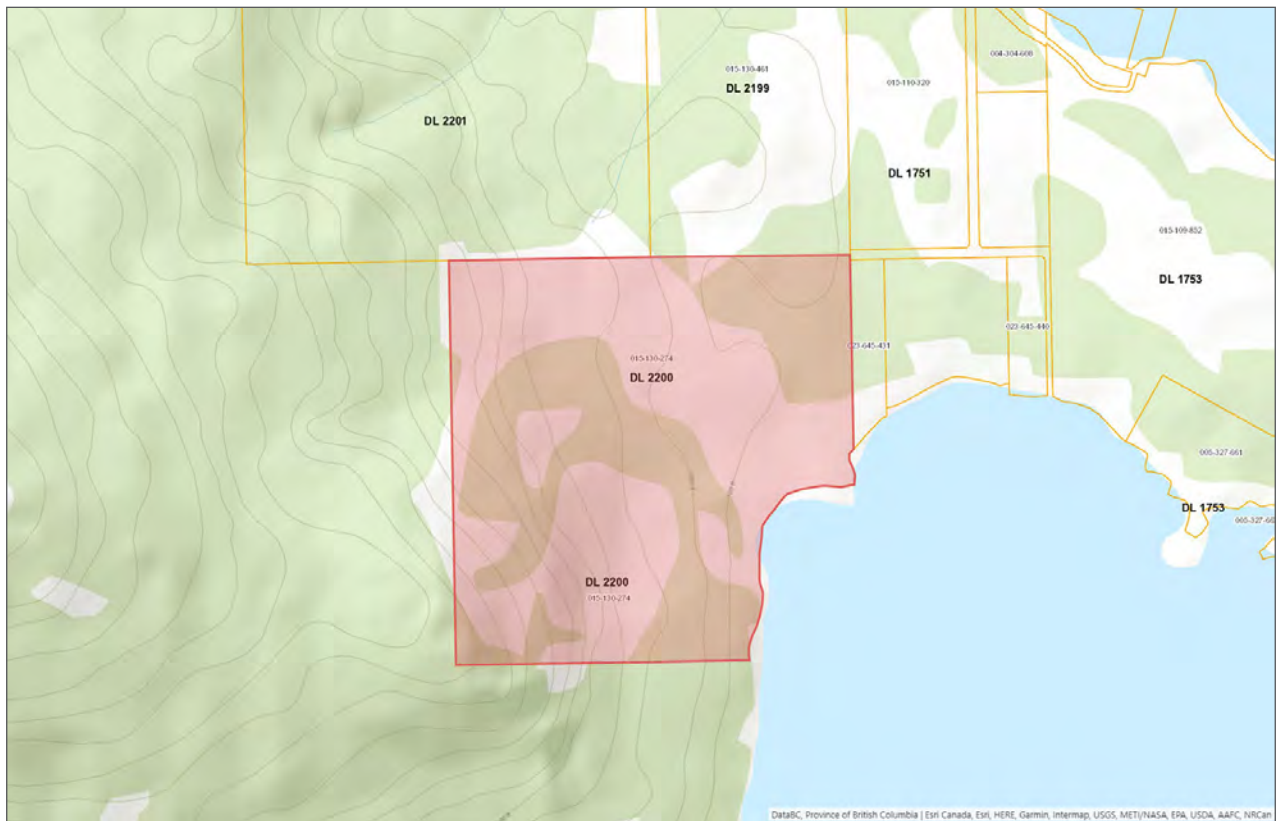
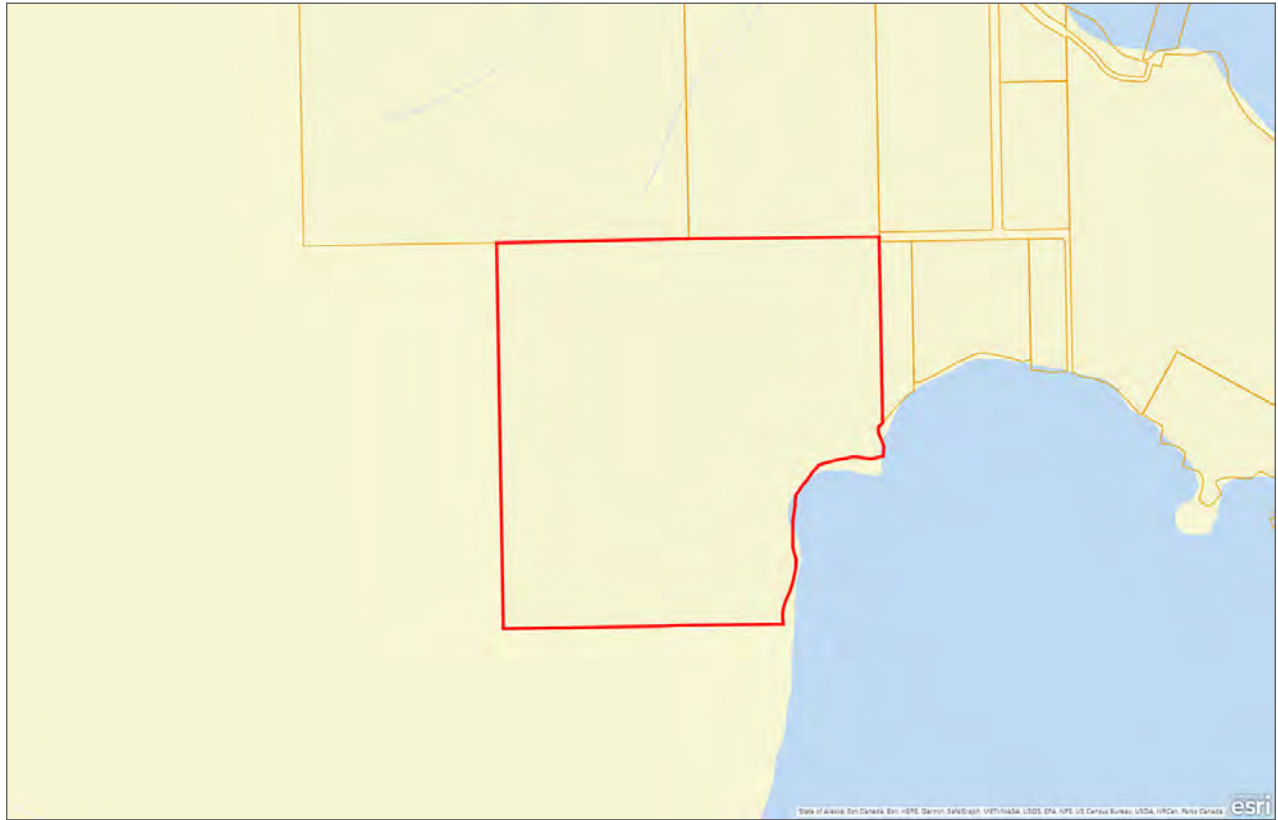












[illegible]



Your Land. Your Legacy. Our Expertise.



www.landquest.com



Jamie Zroback

BC Landpro Group
jamie@landquest.com
1 (604) 483-1605



Sandy Sleath

Representative
sandy@landquest.com
(604) 413-0615



Jason Zroback

BC Landpro Group
jason@landquest.com
1 (604) 414-5577

LandQuest® Realty Corporation
101 - 313 Sixth Street
New Westminster, BC V3L 3A7

Phone: (604) 664-7630 Fax: (604) 516-6504
Toll Free: 1-866-558-5263 (LAND)

Our property descriptions and geographical information are taken from the BC Assessment Authority, Land Titles Office, government maps and other sources. While LandQuest® does not guarantee the information, we believe it to be accurate, but should not be relied upon without verification. This communication is not intended to cause or induce breach of an existing agency agreement. This property is listed on the MLS®. The trademarks MLS®, Multiple Listing Service® and the associated logos are owned by The Canadian Real Estate Association (CREA) and identify the quality of services provided by real estate professionals who are members of CREA.