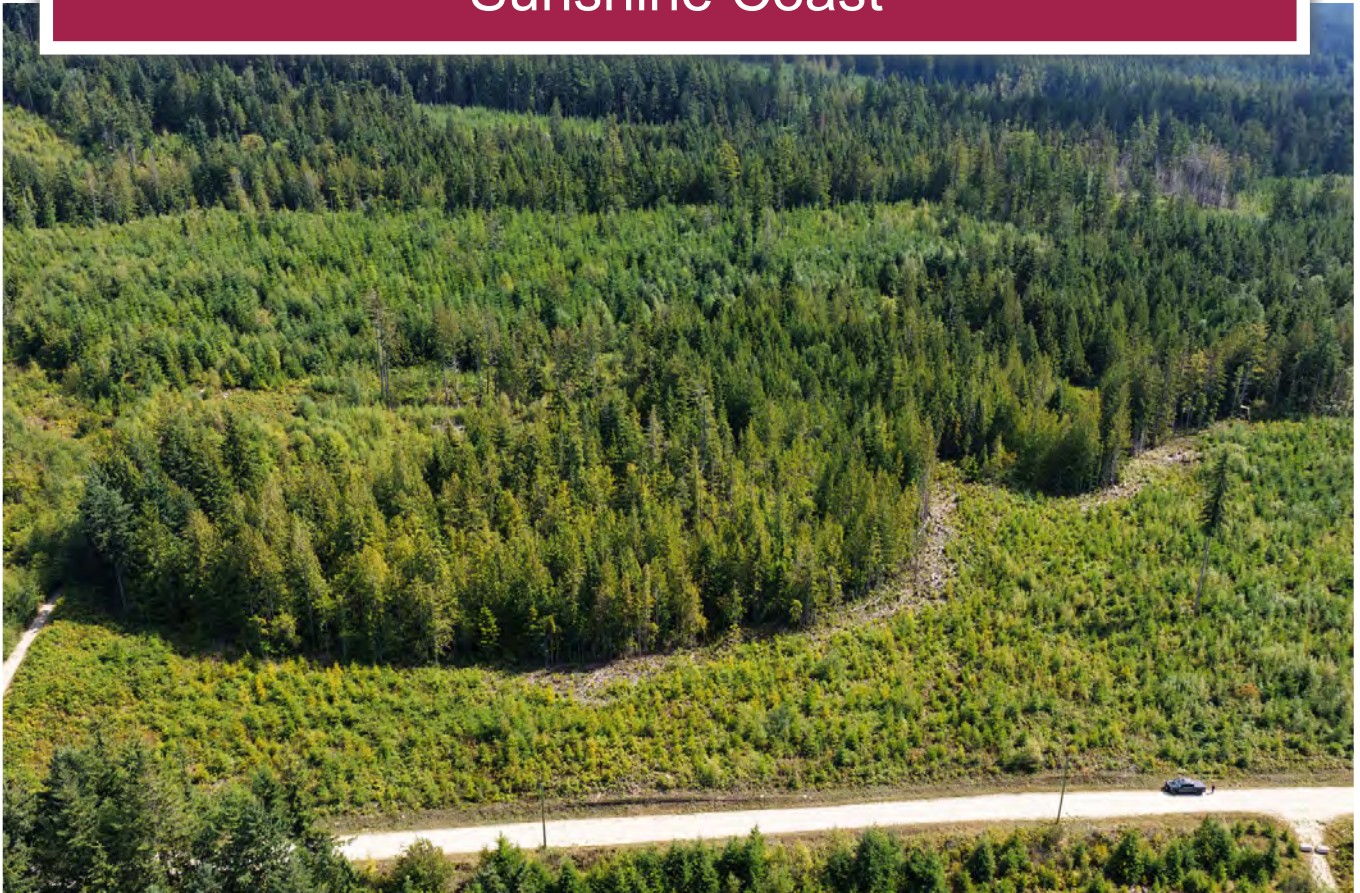




11.8 Acres in Roberts Creek
Sunshine Coast



Jason Zroback
BC Landpro Group
jason@landquest.com
1 (604) 414-5577

Jamie Zroback
BC Landpro Group
jamie@landquest.com
1 (604) 483-1605



Marketing British Columbia to the World®



“The Source” for Oceanfront, Lakefront,
Islands, Ranches, Resorts & Land
in British Columbia

www.landquest.com

11.8 Acres in Roberts Creek

Sunshine Coast

PROPERTY DETAILS

Listing Number: 25233
Price: \$699,800
Size: 11.8 acres

DESCRIPTION

Welcome to a remarkable 11.8-acre distant ocean view parcel on Lockyer Road in the heart of Roberts Creek. This RU1-zoned property offers a rare blend of privacy, utility, and development flexibility. Whether you're looking to establish a rural retreat, a horse training and boarding facility, or explore light manufacturing or storage uses, this parcel accommodates it all—including two single-family dwellings plus suites. Set adjacent to similar sized and large acreages, the property is close to Crown land and extensive trail networks, it's ideal for equestrian enthusiasts and outdoor adventurers alike. With riparian zones and wetlands adding ecological character and value, this scenic acreage is a unique investment opportunity just minutes from amenities and a short commute to Vancouver and the Lower Mainland.

The land has a gentle topography and has ample space to be developed into your intended use. The aspect is west facing and has excellent sun exposure.

Additionally, the property has power to the property line. Access is approximately 3 km up Lockyer Road off Highway 101.

LOCATION

Roberts Creek, BC

DIRECTIONS

Contact the listing agent.

AREA DATA

Roberts Creek (xwesam/Stelk'áya) is a small residential community of about 3,553 people located between Gibsons and Sechelt on the southern Sunshine Coast in British Columbia. It is a short drive from both Gibsons and Sechelt, making it a quick trip for anyone visiting the Sunshine Coast or a convenient day trip from Vancouver.

It is known for its 9 km of shoreline, much of which includes sandy swimming beaches, and the Roberts Creek Mandala which is re-painted each year by 300 residents and visitors. The Roberts Creek community is centered around small shops and restaurants which provide a distinct village ambiance. The Roberts Creek Community Hall, a popular venue for dances, meetings and other events, was built in 1934 and is owned, operated and maintained by the community.

The area includes a paved bike path that runs parallel to the highway; a golf course, Cliff Gilker Park, a family-oriented hiking area.

Roberts Creek is also the location for several important regional amenities including Dakota Ridge, a winter recreation area offering 12 km of groomed snowshoe and cross-country ski trails,



the “Sechelt” landfill, the Sunshine Coast Regional District’s water intake and the Seaview Cemetery.

RECREATION

Hiking, mountain biking, cycling, paddling, boating, fishing, rock climbing, swimming, scuba diving, golfing and snowshoeing.

MAP REFERENCE

49°27’19.08”N and 123°38’21.25”W

BOUNDARIES

Please see mapping section, all boundaries are approximate.

SERVICES

Power to property line.

IMPROVEMENTS

None.

TAXES

\$166.06 (2025) - Managed Forests

ZONING

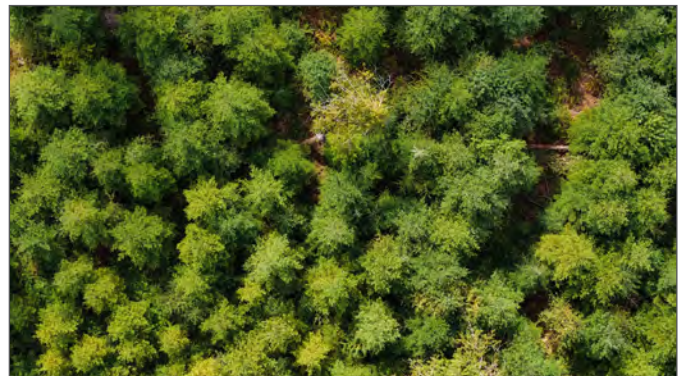
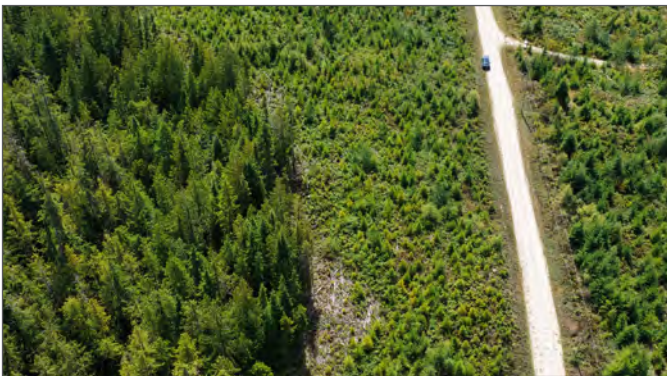
RU1 (Rural Residential One)
Sunshine Coast Regional District Zoning Bylaw No. 722

Additional zoning information can be found on the Sunshine Coast Regional District website, <https://www.scrd.ca/zoning-bylaws/>

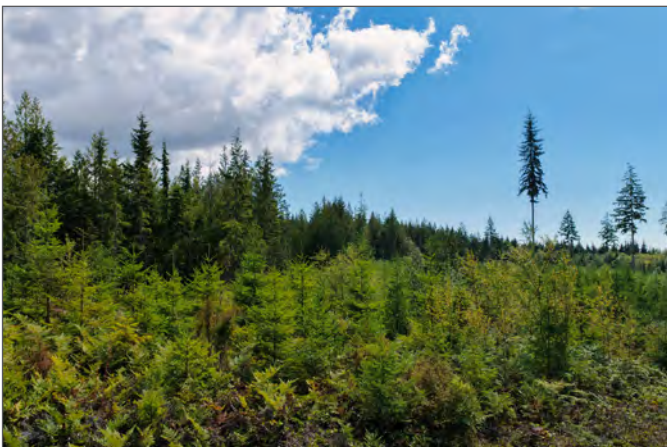
LEGAL

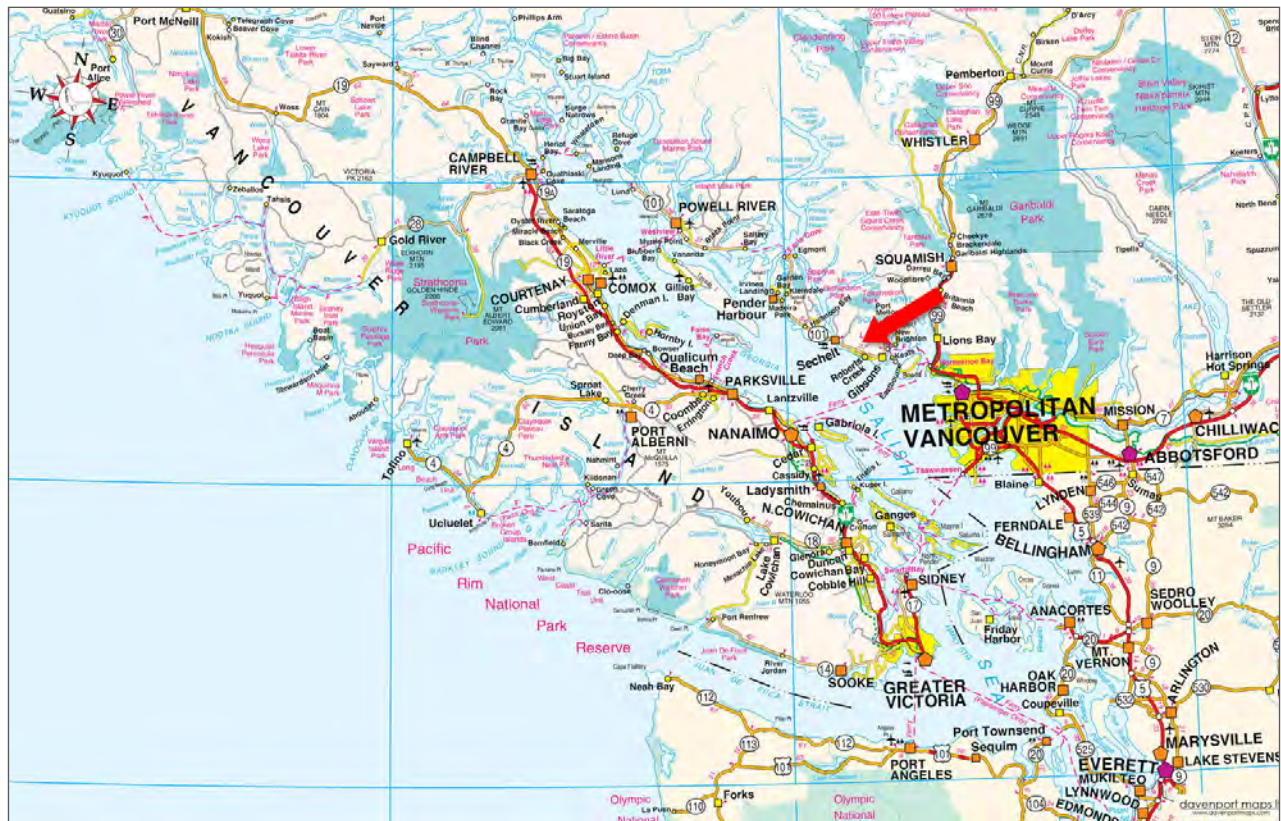
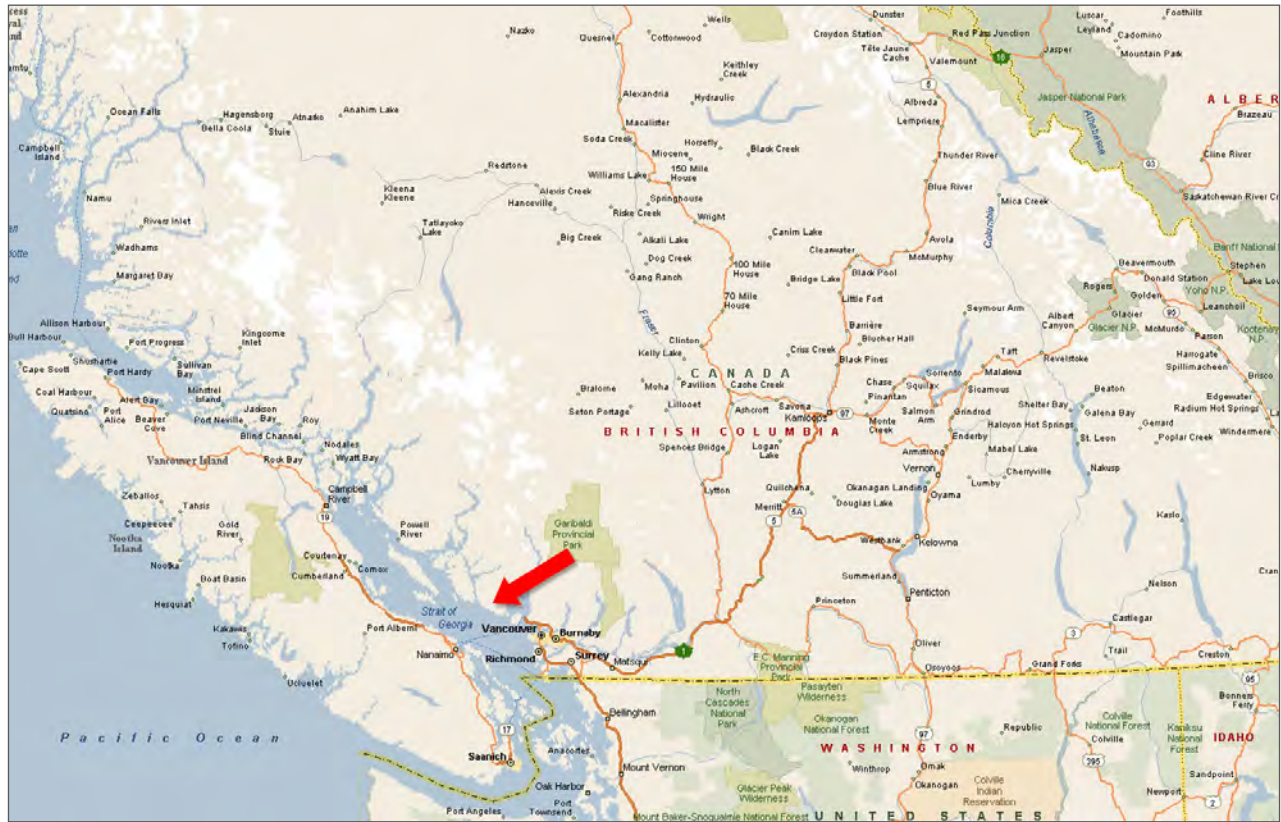
Lot 4 Block B District Lot 3378 Plan 4792

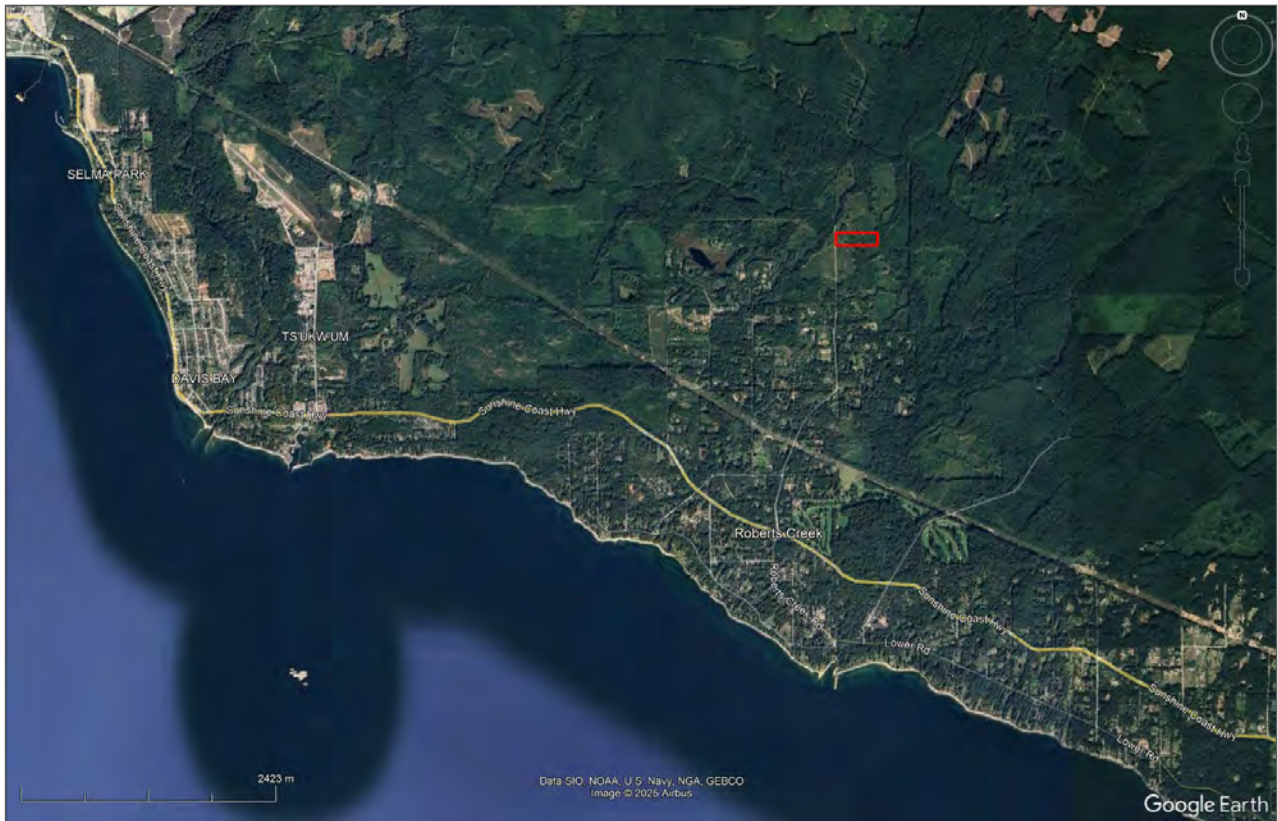
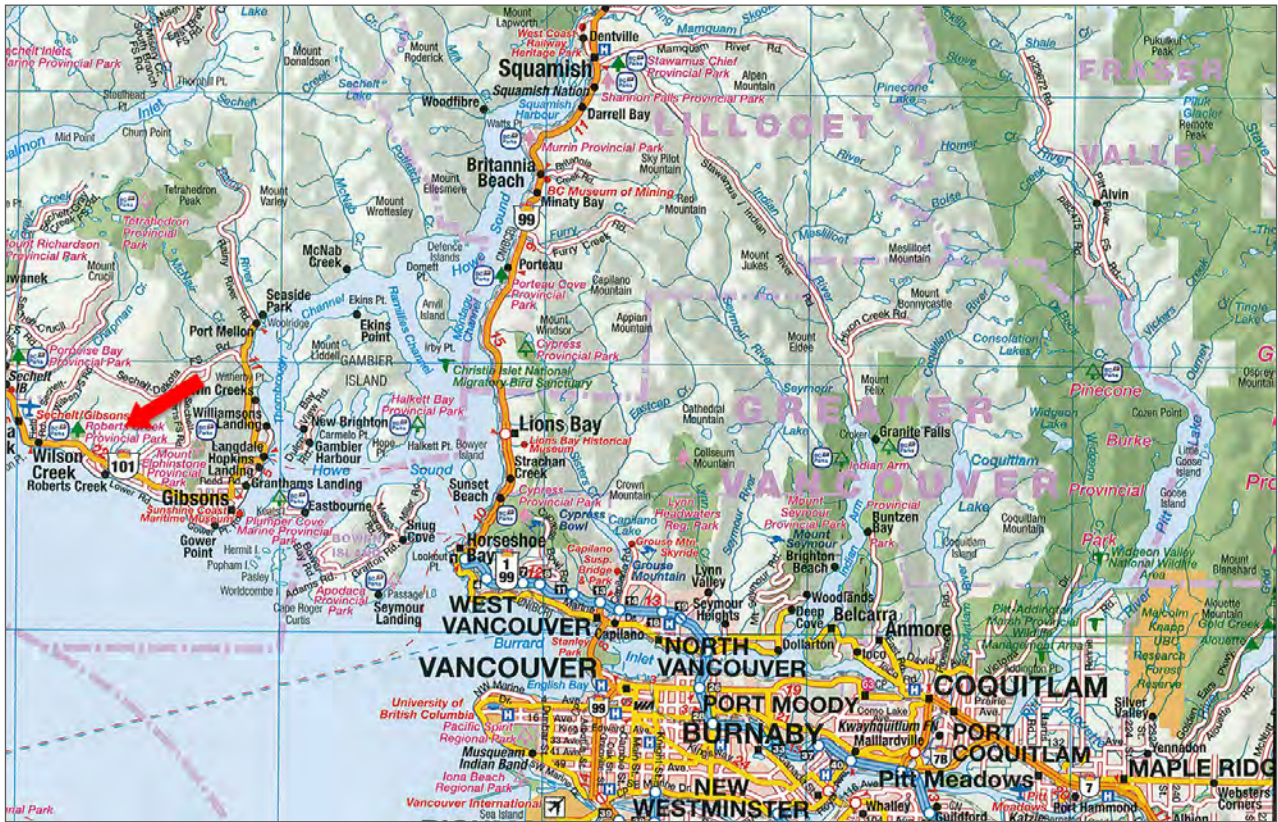
PID 011-315-059

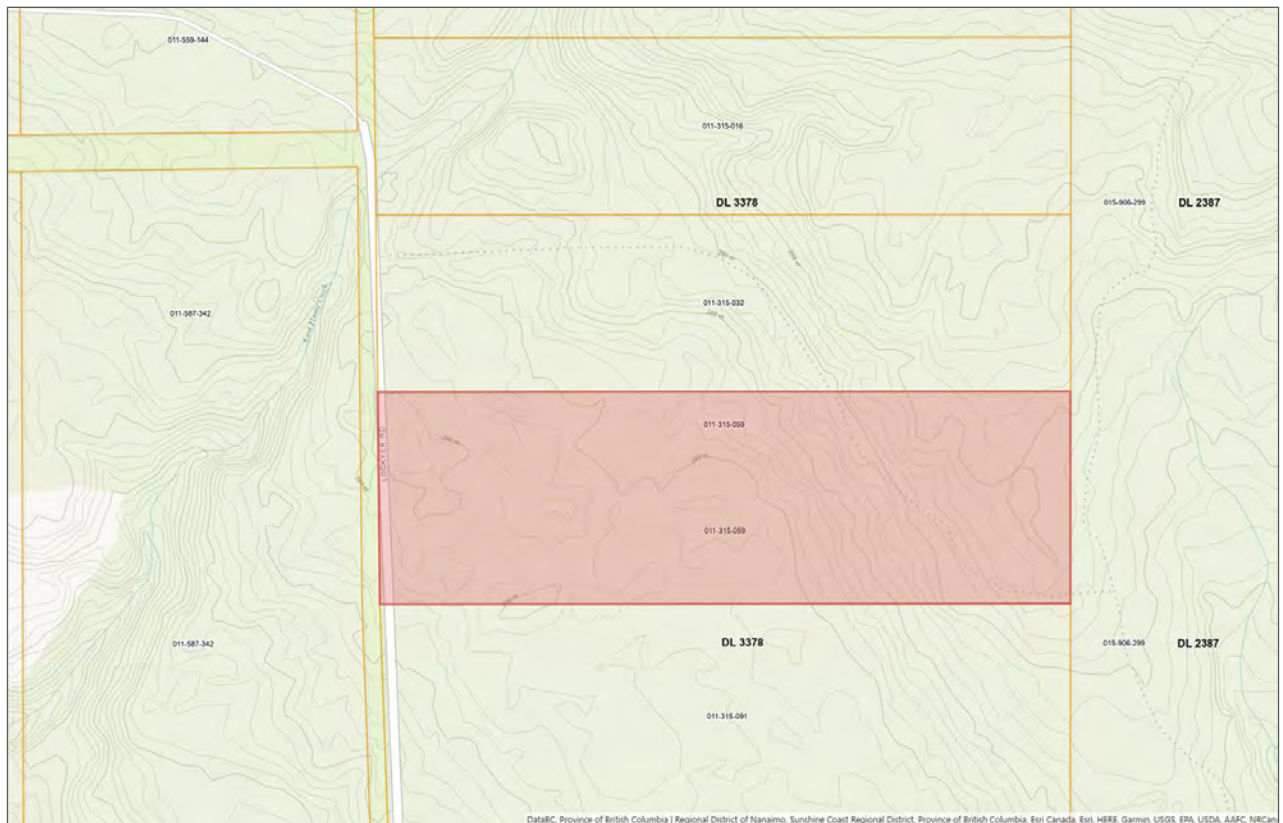
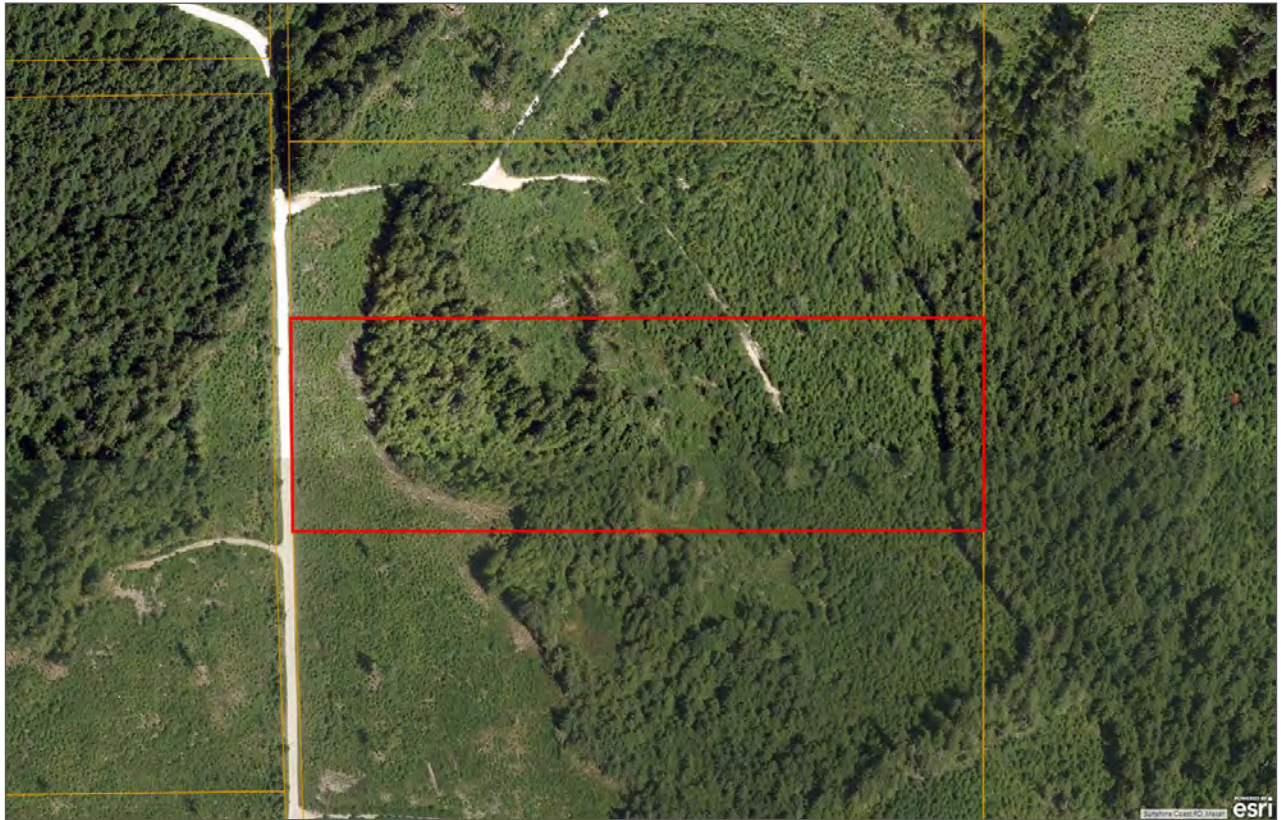
















Marketing British Columbia to the World®



www.landquest.com



Jason Zroback

BC Landpro Group
jason@landquest.com
1 (604) 414-5577



Jamie Zroback

BC Landpro Group
jamie@landquest.com
1 (604) 483-1605

LandQuest® Realty Corporation
101 - 313 Sixth Street
New Westminster, BC V3L 3A7

Phone: (604) 664-7630 Fax: (604) 516-6504
Toll Free: 1-866-558-5263 (LAND)

Our property descriptions and geographical information are taken from the BC Assessment Authority, Land Titles Office, government maps and other sources. While LandQuest® does not guarantee the information, we believe it to be accurate, but should not be relied upon without verification. This communication is not intended to cause or induce breach of an existing agency agreement. This property is listed on the MLS®. The trademarks MLS®, Multiple Listing Service® and the associated logos are owned by The Canadian Real Estate Association (CREA) and identify the quality of services provided by real estate professionals who are members of CREA.