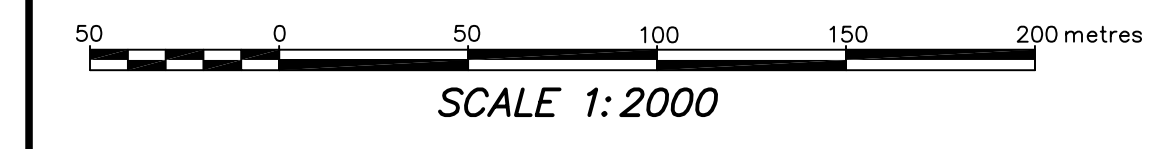


PLAN OF SUBDIVISION OF LOT A (REFERENCE PLAN 1507) AND PARTS OF DISTRICT LOTS 3921 & 3922, GROUP 1, NEW WESTMINSTER DISTRICT.

B.C.G.S. 92F.070



LEGEND

- denotes standard capped post found
- denotes standard rock post found
- denotes standard rock post placed
- denotes non-standard post (19mm iron post) found
- denotes standard iron post found
- denotes standard iron post placed
- △ denotes traverse hub placed
- rk denotes standard short iron post placed in rock

This plan shows horizontal ground-level distances based on a mean ellipsoidal elevation of 50 metres. To compute grid distances, multiply ground-level distances by the mean combined factor of 0.99986477. The UTM coordinates and estimated network horizontal accuracy are derived from GPS dual frequency static baseline ties to the Western Canadian Deformation Array control stations at Nanaimo, Ladoulet, and Whistler.

Bearings to BT's are magnetic - declination 19° E. All distances are in metres and decimals thereof.

RADIAL TIES TO NATURAL BOUNDARY			
From	To	Azimuth	Distance
MON 2	1	242°25'00"	269.20
MON 2	2	245°54'00"	262.10
MON 2	3	242°52'00"	257.10
MON 2	4	252°02'00"	246.90
MON 2	5	256°13'00"	237.50
MON 2	6	258°16'00"	233.10
MON 2	7	263°54'00"	223.40
MON 2	8	269°22'00"	219.80
MON 2	9	277°39'00"	212.60
MON 2	10	283°09'00"	210.70
MON 2	11	288°53'00"	203.60
MON 2	12	294°03'00"	206.90
MON 2	13	299°23'00"	212.90
MON 2	14	304°59'00"	219.40
MON 2	15	308°49'00"	220.70
MON 2	16	313°04'30"	225.20
MON 2	17	316°41'00"	219.00
MON 2	18	318°58'30"	224.30
MON 2	19	322°23'00"	225.70
MON 2	20	324°46'00"	237.00
MON 2	21	328°09'00"	260.10
MON 2	22	332°33'00"	261.00
MON 2	23	335°01'00"	259.00
MON 2	24	336°54'00"	266.80
MON 2	25	339°15'00"	269.60
MON 2	26	343°24'30"	255.10
MON 2	27	345°42'00"	242.10
MON 2	28	349°54'00"	225.80
MON 2	29	352°08'30"	208.00
MON 2	30	354°03'00"	193.30
MON 2	31	356°52'00"	175.20
MON 2	32	358°40'30"	162.40
MON 2	33	359°27'00"	146.20
MON 2	34	362°34'55"	127.40
MON 2	35	363°09'00"	113.70
MON 2	36	364°04'00"	97.40
MON 2	37	365°29'30"	88.20
MON 2	38	371°52'00"	72.90
MON 2	39	374°55'00"	71.00
MON 2	40	379°32'00"	64.30
MON 2	41	385°24'30"	57.60
MON 2	42	389°09'00"	53.70
MON 2	43	391°09'00"	63.70
MON 2	44	392°27'00"	83.70
MON 2	45	393°09'00"	103.20
MON 2	46	393°26'00"	114.60
MON 2	47	398°14'30"	135.70
MON 2	48	398°19'30"	149.80
MON 2	49	399°24'00"	165.10
MON 2	50	399°28'00"	168.40
MON 2	51	399°54'30"	177.20
MON 2	52	399°54'00"	180.60
MON 2	53	344°46'00"	198.10
MON 2	54	348°19'00"	210.30
MON 2	55	351°01'30"	220.00
MON 2	56	351°58'00"	192.00
TH 4640	57	184°43'00"	148.00
TH 4640	58	172°46'00"	149.60
TH 4640	59	163°43'00"	148.90
TH 4640	60	155°29'00"	142.80

Mortgages:
5200 Investments Ltd. (Inc. No. 242085)

Authorized Signatory

Authorized Signatory

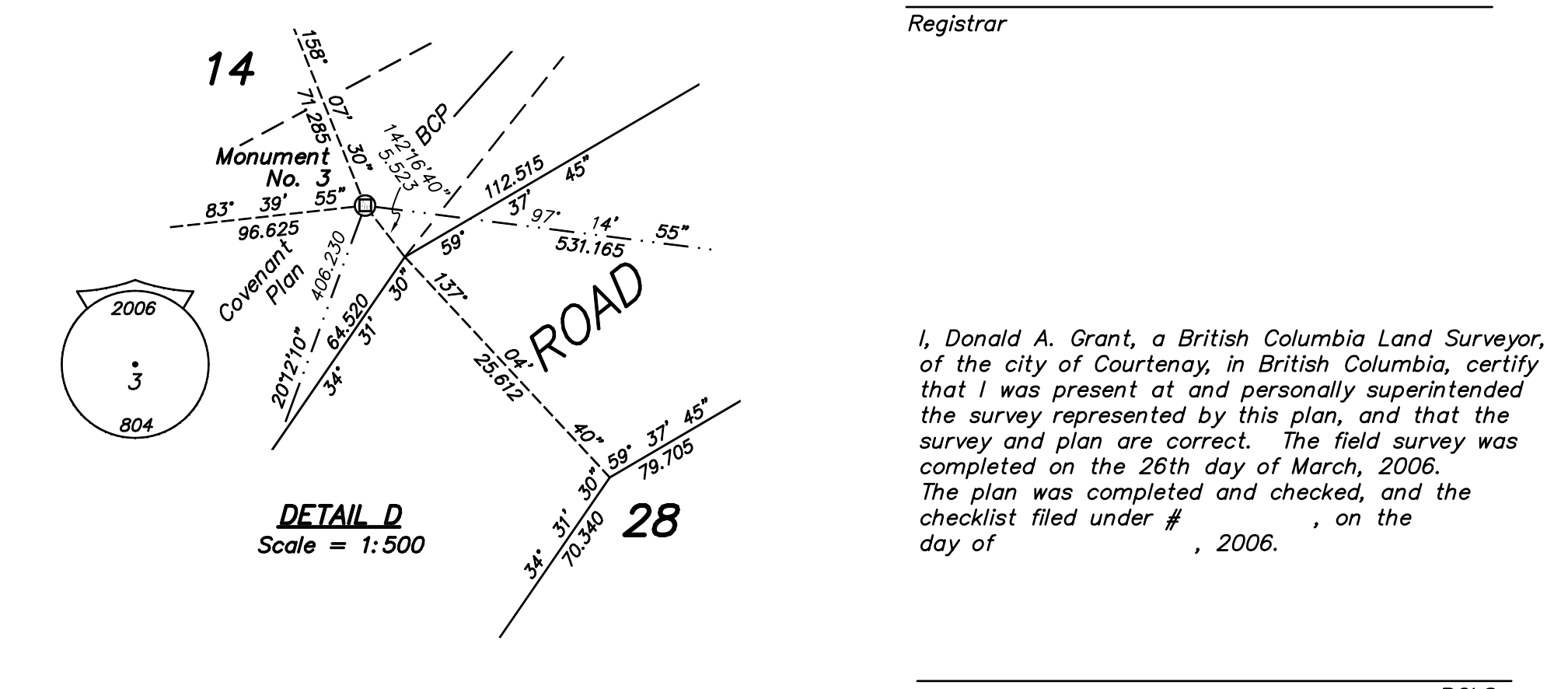
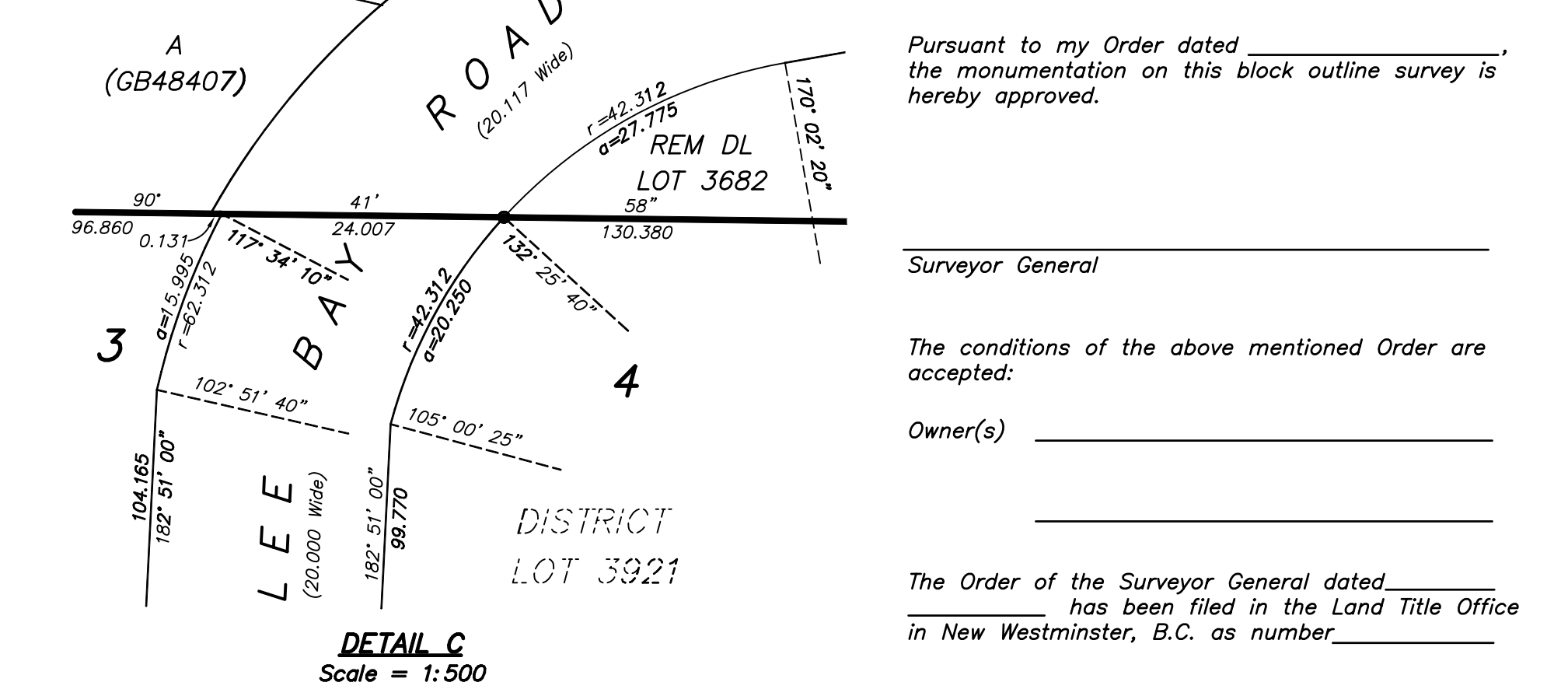
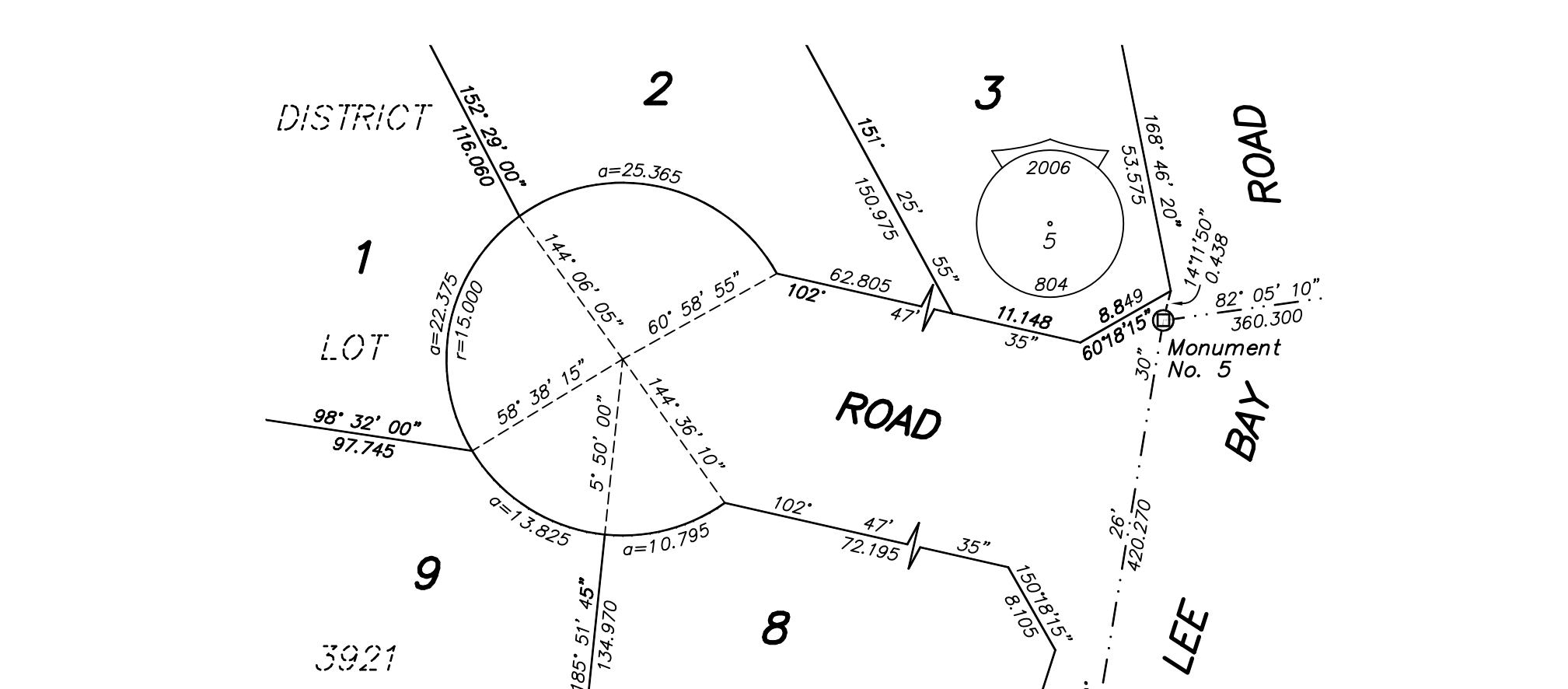
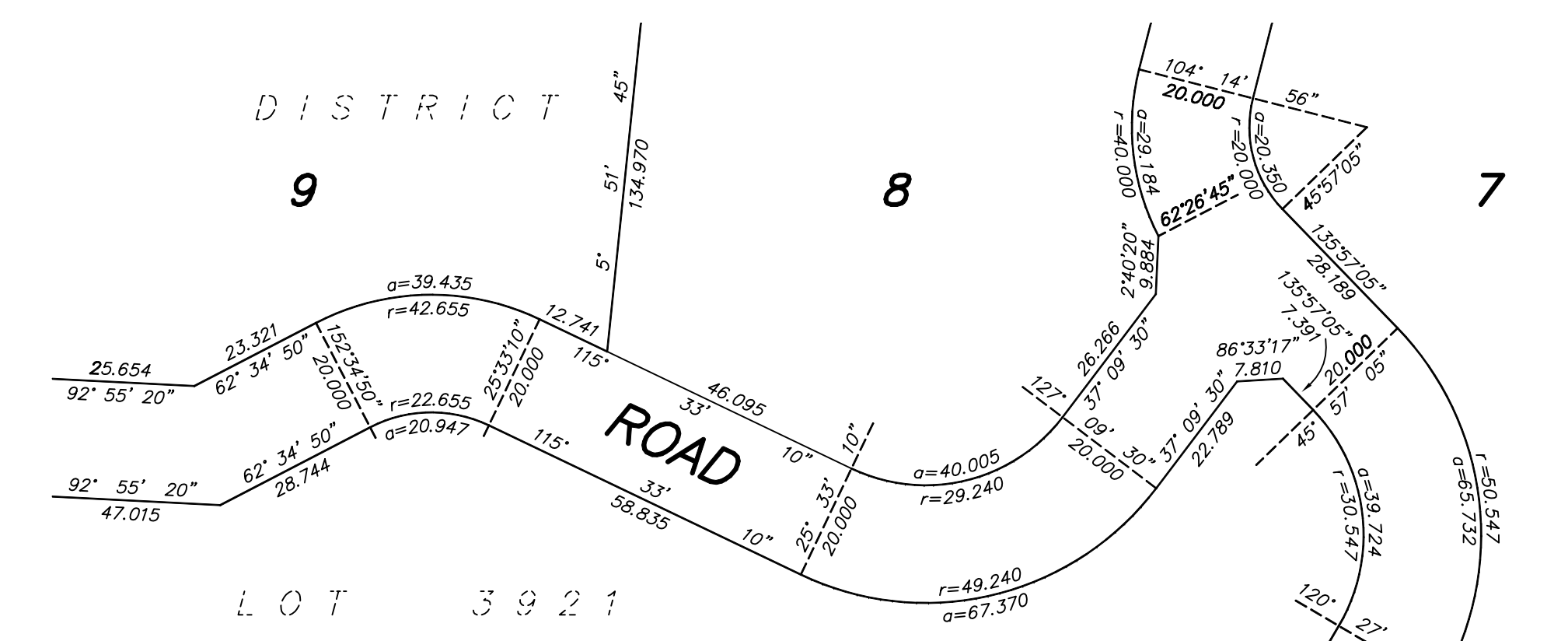
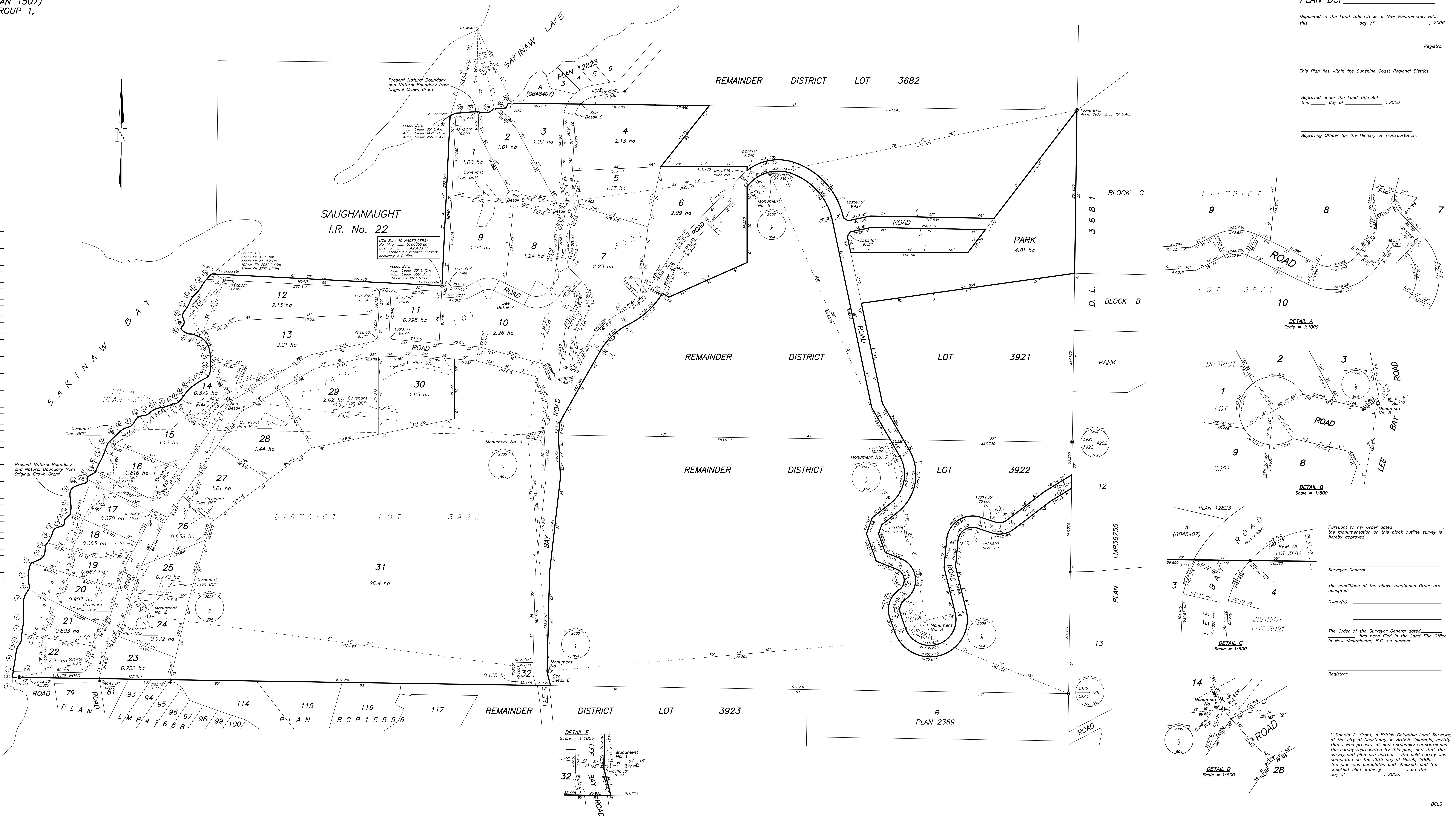
Witness as to both signatures

Occupation

Address

The registered owners designated hereon declare that they have entered into covenants in favour of Her Majesty the Queen in right of the Province of British Columbia as represented by the Ministry of Transportation, the Vancouver Coastal Health Authority, and the Sunshine Coast Regional District under section 219 of the Land Title Act.

Covenants



PLAN BCP

Deposited in the Land Title Office at New Westminster, B.C. this _____ day of _____, 2006.

Registrar

This Plan lies within the Sunshine Coast Regional District.

Approved under the Land Title Act this _____ day of _____, 2006.

Approving Officer for the Ministry of Transportation.

Pursuant to my Order dated _____ the monumentation on this block outline survey is hereby approved.

Surveyor General

The conditions of the above mentioned Order are accepted.

Owner(s)

The Order of the Surveyor General dated _____ has been filed in the Land Title Office in New Westminster, B.C. as number _____.

Registrar

I, Donald A. Grant, a British Columbia Land Surveyor, of the City of Courtenay, in British Columbia, certify that I was present at and personally superintended the survey represented by this plan, and that the survey and plan are correct. The field survey was completed on the 26th day of March, 2006. The plan was completed and checked, and the checklist filed under # _____, on the day of _____, 2006.